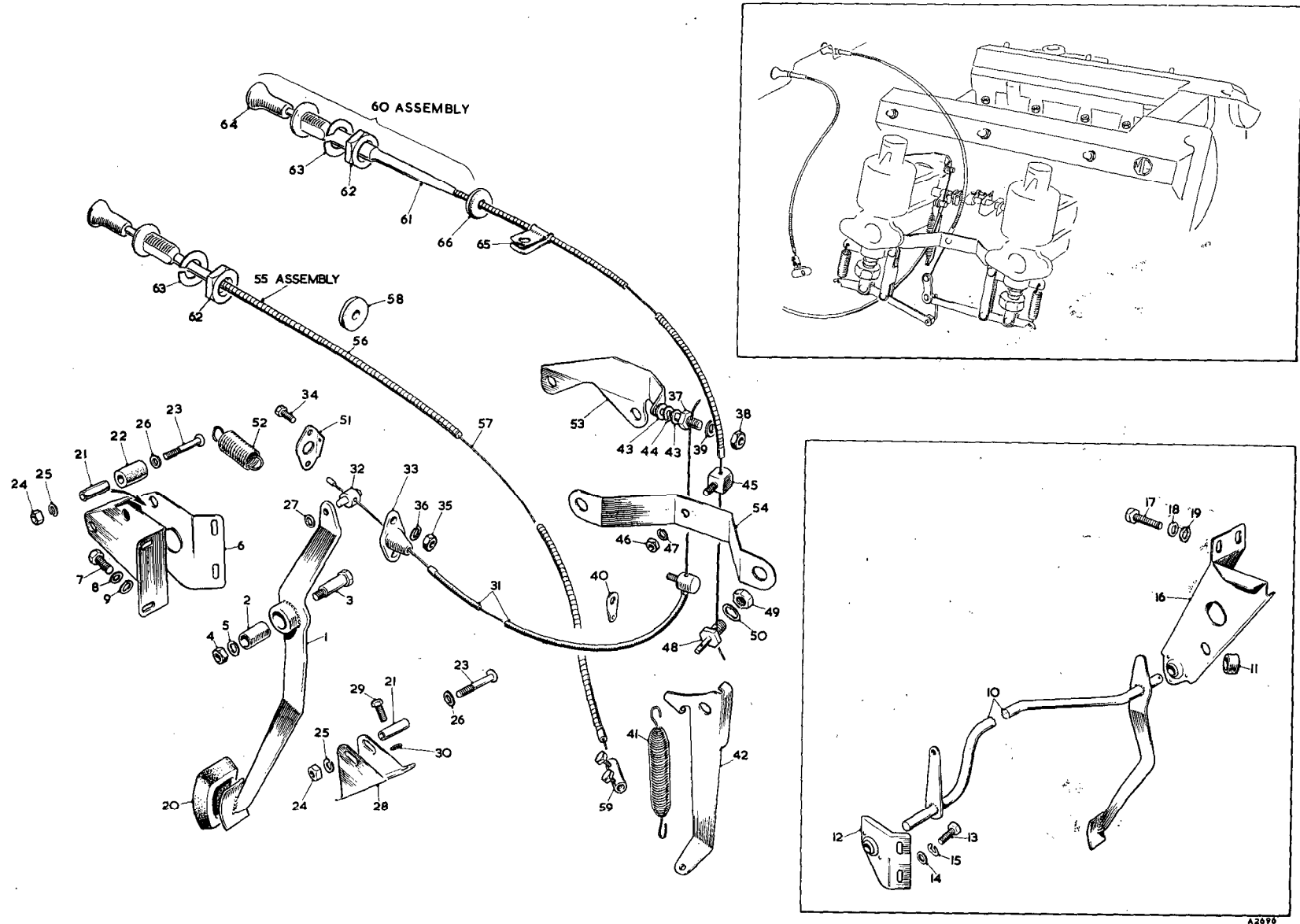
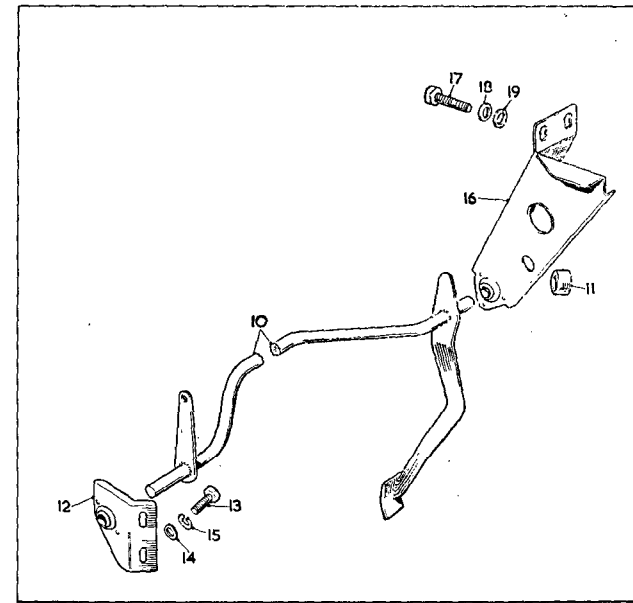
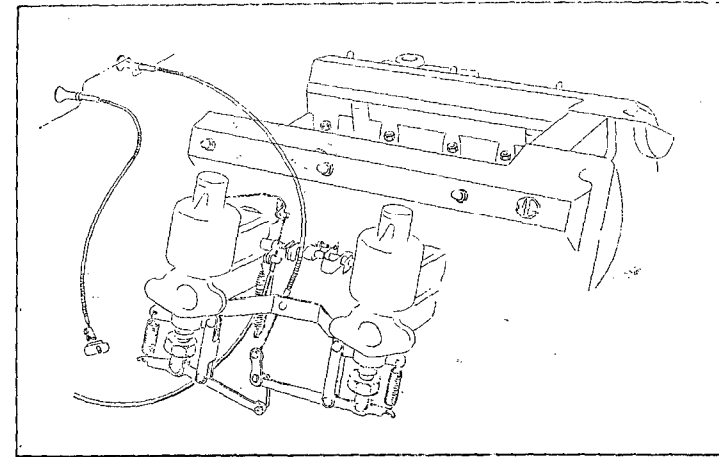
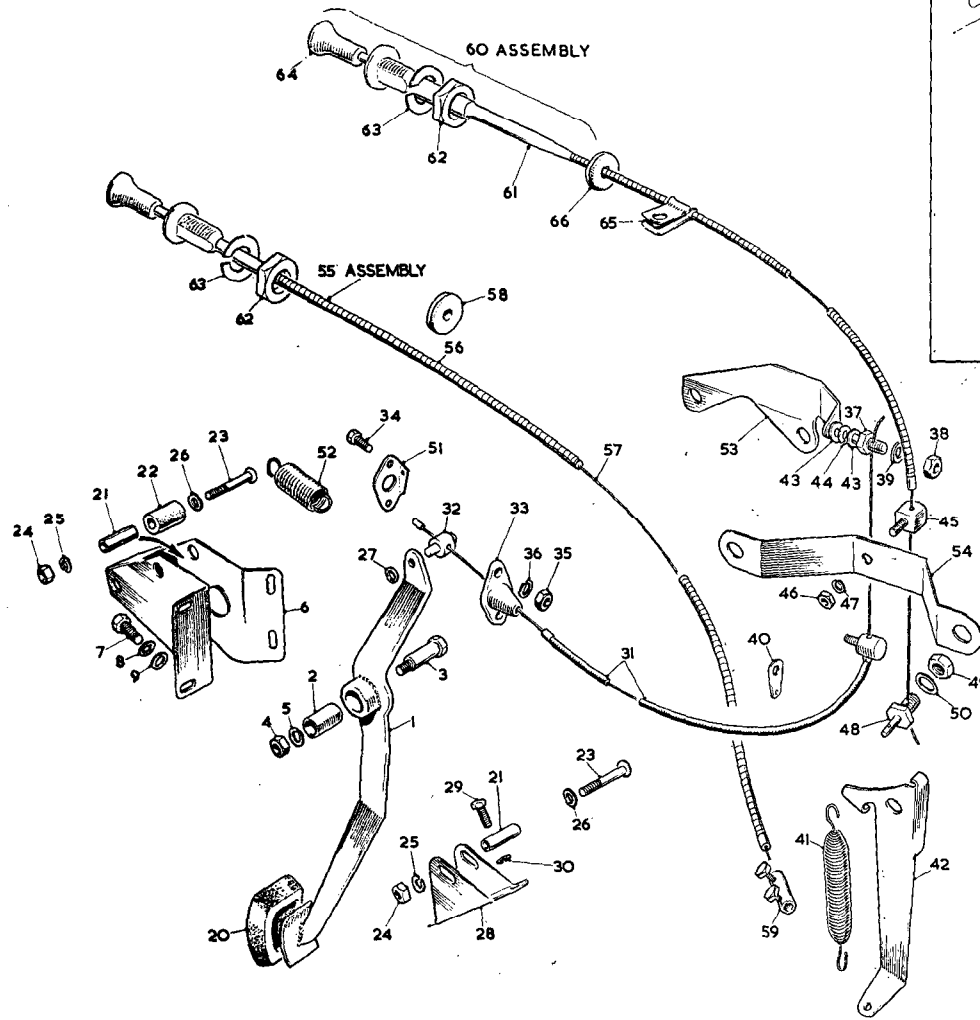


**SERVICE PARTS LIST**

**THE M.G. Series MGA TWIN CAM**

Item No.	DESCRIPTION	Commencing (C) 501		Qty. per Vehicle		Unit of Issue	Type of Vehicle	MODIFICATIONS			REMARKS
		Part Number	Illus. No.	RHD	LHD			New Part Number	Change Point	Amdt. No.	
	<b>ENGINE CONTROLS</b>										
1	<b>Pedal assembly—accelerator</b>	<b>AHH5300</b>	<b>AM1</b>	1							
2	Bush	AHH5301	AM2	1							
3	Fulcrum pin—accelerator pedal	AHH5306	AM3	1							
4	Nut for fulcrum pin	FNZ105	AM4	1							
5	Washer for fulcrum pin (spring)	LWZ205	AM5	1	24						
6	<b>Bracket—accelerator pedal mounting</b>	<b>AHH5302</b>	<b>AM6</b>	1							
7	Screw—bracket to goalpost inner upright	HPZ0405	AM7	4							
8	Washer for screw (plain)	PWZ104	AM8	4	12						
9	Washer for screw (spring)	LWZ204	AM9	4	12						
10	<b>Pedal and cross-shaft assembly—accelerator</b>	<b>AHH5727</b>	<b>AM10</b>		1						
11	Locating collar—accelerator cross-shaft	AHH5314	AM11		1						
12	<b>Bracket assembly—accelerator cross-shaft—R.H.</b>	<b>AHH5320</b>	<b>AM12</b>	1							
13	Screw—bracket to goalpost—R.H.	HPZ0405	AM13	2							
14	Washer for screw (plain)	PWZ104	AM14	2	12						
15	Washer for screw (spring)	LWZ204	AM15	2	12						
16	<b>Bracket assembly—accelerator cross-shaft—L.H.</b>	<b>AHH5321</b>	<b>AM16</b>	1							
17	Screw—bracket to goalpost—L.H.	HZS0405	AM17	3							
18	Washer for screw (plain)	PWZ104	AM18	3	12						
19	Washer for screw (spring)	LWZ204	AM19	3	12						
20	Pad—pedal (rubber)	ACA5321	AM20	1	1	12					
21	Tube—distance	AHH5303	AM21	2	2						
22	Stop—accelerator pedal	AHH5304	AM22	1	1						
23	Screw—distance tube and adjustable stop	PMZ0422	AM23	2	2						
24	Nut for screw	FNZ104	AM24	2	2						
25	Washer for screw (spring)	LWZ204	AM25	2	2	12					
26	Washer for screw (plain)	PWZ104	AM26	2	2	12					
27	Washer—cable to pedal (plain)	AJD7042	AM27	1	1						
28	Adjustable stop—accelerator pedal	AHH5380	AM28	1	1						
29	Screw for adjustable stop	HPZ0405	AM29	2	2						
30	Washer for screw (spring)	LWZ204	AM30	2	2	12					
31	<b>Cable—accelerator</b>	<b>AHH5830</b>	<b>AM31</b>	1	1						
32	Pin—cable anchor	AHH5626	AM32	1	1						
33	Guide—cable	AHH5308	AM33	1	1						
34	Screw—guide to toeboard plate	PMZ0308	AM34	2	2						
35	Nut for screw	FNZ103	AM35	2	2						
36	Washer for screw (spring)	LWZ203	AM36	2	2						
37	Clamp—accelerator cable	AHH5309	AM37	1	1						
38	Nut—cable to clamp	FNZ104	AM38	1	1						
39	Washer—cable to clamp (plain)	PWZ104	AM39	1	1	12					
40	<b>Bracket—accelerator return spring</b>	<b>84180</b>	<b>AM40</b>	1	1						





A2696

**SERVICE PARTS LIST**

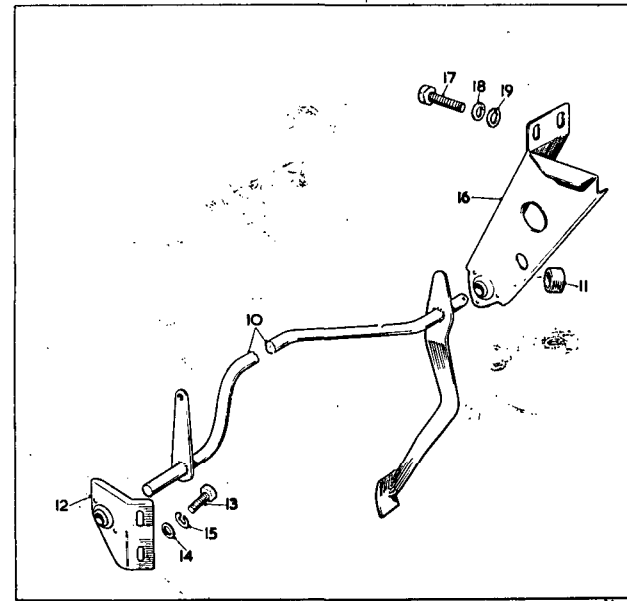
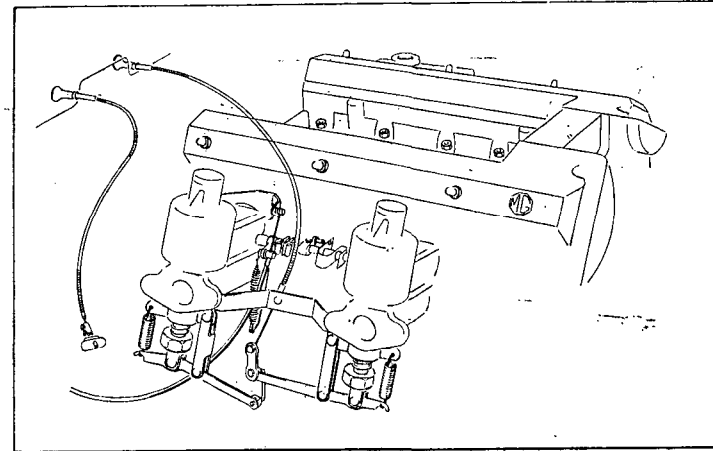
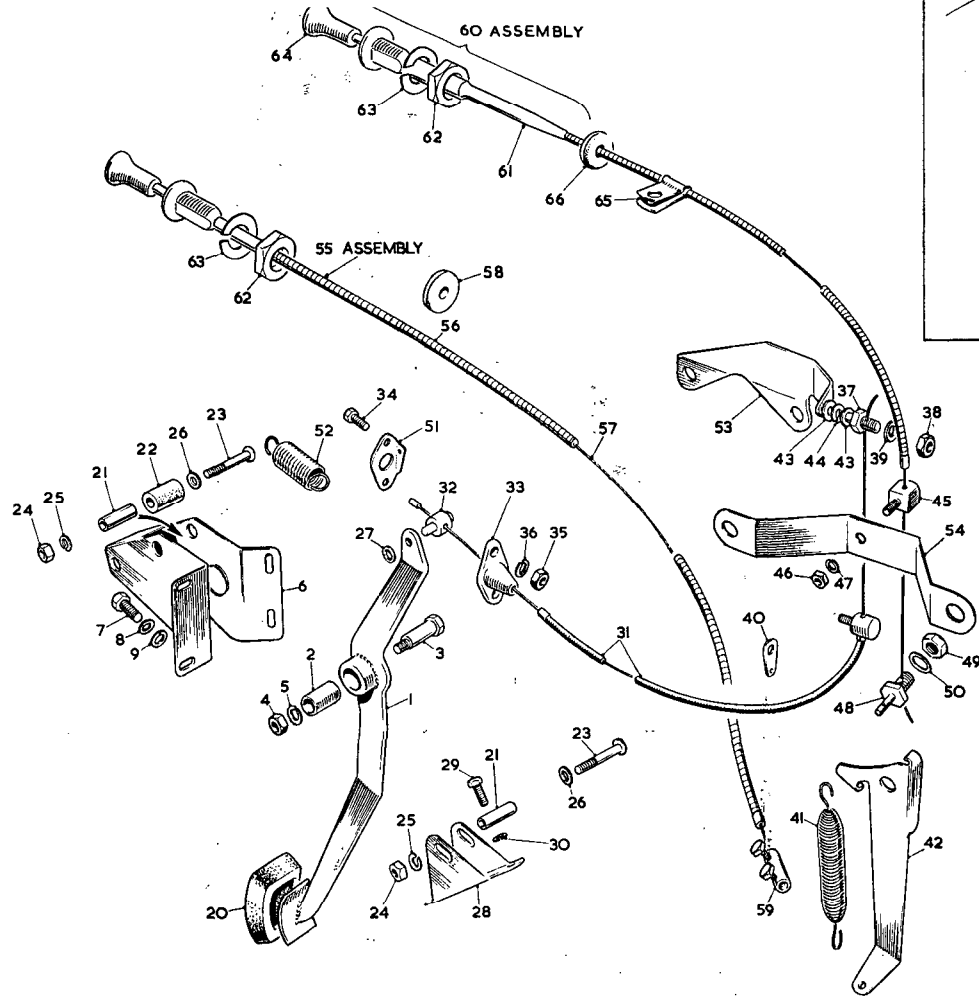
**THE M.G. Series MGA TWIN CAM**

Item No.	DESCRIPTION	Commencing (C) 501		Qty. per Vehicle		Unit of Issue	Type of Vehicle	MODIFICATIONS			REMARKS
		Part Number	Illus. No.	RHD	LHD			New Part Number	Change Point	Amdt. No.	
	<b>Engine Controls—continued</b>										
1	Spring—accelerator return .....	AHH5621	AM41	1	1						
2	<b>Bracket—accelerator return spring anchor</b>	<b>AHH5829</b>	<b>AM42</b>	<b>1</b>	<b>1</b>						
3	Washer—cable to bracket (plain).....	AJD7042	AM43	2	2						
4	Washer—cable to bracket (spring).....	AJD7711	AM44	1	1						
5	Abutment—choke control .....	ACH5112	AM45	1	1						
6	Nut for abutment .....	FNZ103	AM46	1	1						
7	Washer for abutment (spring) .....	LWZ203	AM47	1	1						
8	Clamp—choke control cable .....	AHH5309	AM48	1	1						
9	Nut—cable to clamp .....	FNZ104	AM49	1	1						
10	Washer—cable to clamp (plain).....	PWZ104	AM50	1	1	12					
11	<b>Bracket—pull-off spring anchor</b>	<b>AHH5623</b>	<b>AM51</b>	<b>1</b>	<b>1</b>						
12	Spring—pull-off .....	AHH5624	AM52	1	1						
13	Bracket—accelerator abutment .....	AHH5827	AM53	1	1						
14	Bracket—choke cable abutment .....	AHH5828	AM54	1	1						

**SERVICE PARTS LIST**

**THE M.G. Series MGA TWIN CAM**

Item No.	DESCRIPTION	Commencing (C) 501		Qty. per Vehicle		Unit of Issue	Type of Vehicle	MODIFICATIONS			REMARKS
		Part Number	Illus. No.	RHD	LHD			New Part Number	Change Point	Amdt. No.	
	<b>STARTER CONTROL</b>										
1	Cable assembly—starter control	<b>AHH5327</b>	<b>AM55</b>	.1							
2	Cable (outer)	AHH5328	AM56	.1							
3	Cable (inner)	AHH5329	AM57	.1							
4	Grommet—dash	RFR103	AM58	.1	.1						
5	Cable assembly—starter control	<b>AHH5330</b>			<b>.1</b>						
6	Cable (outer)	AHH5331			.1						
7	Cable (inner)	AHH5332			.1						
8	Coupling—starter pull connector	3H950	AM59	.1	.1						
	<b>CHOKE CONTROL</b>										
9	Cable assembly—choke control	<b>BHA4084</b>	<b>AM60</b>	.1							
10	Body tube and cable assembly	47H5173	AM61	.1							
11	Nut—body fixing	17H5286	AM62	.1							
12	Washer for nut	AKH456	AM63	.1							
13	Knob and wire assembly	47H5172	AM64	.1							
14	Cable assembly—choke control	<b>BHA4085</b>			<b>.1</b>						
15	Body tube and cable assembly	47H5175			.1						
16	Nut—body fixing	17H5286			.1						
17	Washer for nut	AKH456			.1						
18	Knob and wire assembly	47H5174			.1						
19	Clip fixing cable	PCR0311	AM65	.1	.1						
20	Grommet for dash	RFR103	AM66	.1	.1						



A2696