

SERVICE PARTS LIST

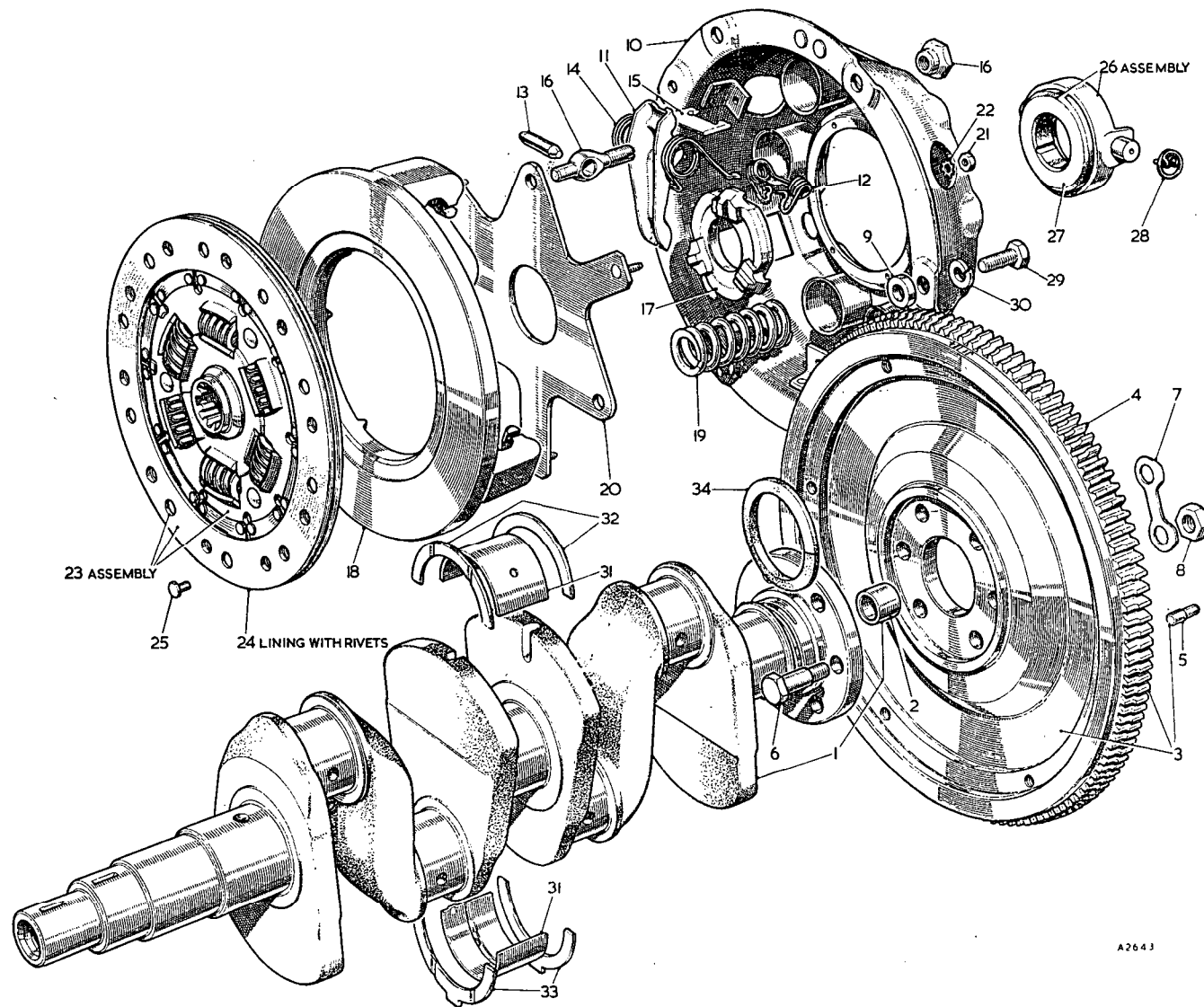
THE M.G. Series MGA TWIN CAM

Item No.	DESCRIPTION	Commencing (E) 101		Qty. per Vehicle		Unit of Issue	Type of Vehicle	MODIFICATIONS			REMARKS
		Part Number	Illus. No.	RHD	LHD			New Part Number	Change Point	Amdt. No.	
	ENGINE										
	ENGINE UNIT										
1	Stripped engine (R)	AEH37		1	1						
2	Half-engine	AEH36		1	1						
3	Block assembly—cylinder	AEH35	A1	1	1						
4	Plug for core hole	AEH592	A2	4	4						
5	Plug for oil gallery	1H813	A3	1	1						
6	Plug for oil filter boss	11G14	A4	1	1						
7	Plug for oil relief valve hole	6K899	A5	2	2						
8	Plug for crankcase oil hole (taper)	6K874	A6	2	2						
9	Plug for oil gallery	2K8623	A7	3	3						
10	Plug for oil hole (screwed)	2K4992	A8	1	1						
11	Washer for plug	6K638	A9	1	1	12					
12	Stud for cylinder head	AEH549	A10	10	10						
13	Stud for main bearing cap	51K894	A11	6	6						
14	Washer for stud (spring)	LWN208	A12	6	6						
15	Nut for stud	LNN208	A13	6	6						
16	Stud for oil pump	AEH601	A14	3	3						
17	Washer for stud (plain)	PWN105	A15	3	3	12					
18	Washer for stud (spring)	2K5319	A16	3	3						
19	Nut for stud	FNN105	A17	3	3						
20	Stud for tachometer drive housing	CLS2511	A18	2	2						
21	Washer for stud (plain)	PWZ105	A19	2	2						
22	Washer for stud (spring)	LWZ205	A20	2	2	24					
23	Nut for stud	FNZ105	A21	2	2						
24	Plate—blanking	1G2443	A22	1	1						
25	Joint for plate	1G2444	A23	1	1	12					
26	Stud for plate	53K257	A24	2	2						
27	Washer for stud (spring)	LWZ205	A25	2	2	24					
28	Nut for stud	FNZ105	A26	2	2						
29	Dowel for engine rear plate	1G752	A27	2	2						
30	Dowel for engine front plate	AEH307	A28	1	1						
31	Dowel for engine front plate and timing case	AEH308	A29	1	1						
32	Tap—water drain	3H576	A30	1	1						
33	Washer for tap	2K4954	A31	1	1	36					
34	Washer for tap	2K4975		1	1						Alternatives
35	Liner for half-speed shaft	8G2176	A32	1	1						
36	Cap for main bearing (front)	N.S.P.	A33								
37	Cap for main bearing (centre)	N.S.P.	A34								
38	Cap for main bearing (rear)	N.S.P.	A35								
39	Joint for front and rear main bearing caps	1H353	A36	2	2	12					
40	Piston assembly (standard)	AEH554	A37	4	4		AEH616 AEH640 AEH673 AEH649	Com. (E) 446 Com. (E) 606 Com. (E) 2057 Com. (E) 606	471	For all replacements AEH673 must be used	
	Piston & S.S. - Q R 3710 SEE P.M.C. 483.										
41	Ring—compression (chrome)	AEH556	A38	4	4						
42	Ring—compression (taper)	AEH557	A39	8	8						
43	Ring—scraper	AEH558	A40	4	4						
44	Ring—twin segment scraper			4	4		AEH615 AEH672	Fin. (E) 445 Com. (E) 446 Com. (E) 2057		For all replacements AEH672 must be used	
45	Pin—gudgeon	AEH441	A41	4	4						
46	Circlip	CCN214	A42	8	8						Correction. Was AEC785

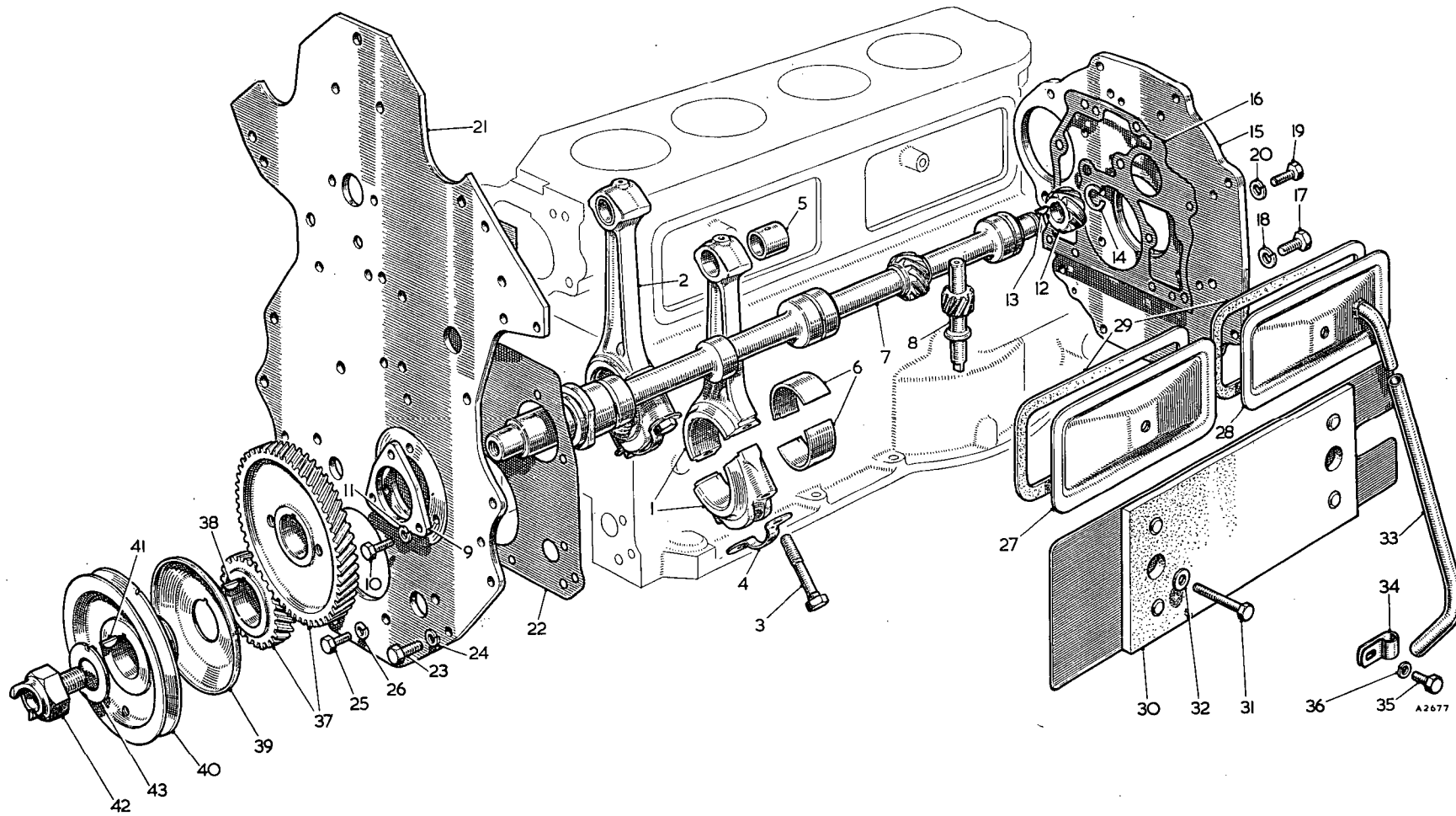
SERVICE PARTS LIST

THE M.G. Series MGA TWIN CAM

Item No.	DESCRIPTION	Commencing (E) 101		Qty. per Vehicle		Unit of Issue	Type of Vehicle	MODIFICATIONS			REMARKS
		Part Number	Illus. No.	RHD	LHD			New Part Number	Change Point	Amdt. No.	
	CRANKSHAFT, FLYWHEEL, CLUTCH										
1	Crankshaft assembly with flywheel and clutch	AEH44		1	1						
2	Crankshaft with bush	AEH424	AA1	1	1						
3	Bush for drive gear	1G765	AA2	1	1	12					
4	Flywheel complete (R)	AEH442	AA3	1	1						
5	Ring—starter (Not U.K.)	1G2874	AA4	1	1						
6	Dowel—clutch to flywheel	AEH541	AA5	2	2						
7	Bolt—flywheel to crankshaft	51K1022	AA6	6	6						
8	Washer for bolt (lock)	6K26	AA7	3	3						
9	Nut for bolt	FNZ506	AA8	6	6						
10	Clutch assembly	N.S.P.									
11	Cover assembly—clutch	27H3248		1	1						
12	Washer—distance	AEH650	AA9	6	6						
13	Cover—clutch	N.S.P.	AA10								
14	Lever—release	27H3223	AA11	3	3						
15	Retainer for release lever	7H3001	AA12	3	3	72					
16	Pin for release lever	7H3067	AA13	3	3	12					
17	Spring (anti-rattle)	7H3171	AA14	3	3	36					
18	Strut—release lever	7H3069	AA15	3	3						
19	Eyebolt and nut	27H3157	AA16	3	3						
20	Plate—release lever	7H3213	AA17	1	1	12					
21	Plate—pressure	27H3224	AA18	1	1						
22	Spring for pressure plate	7H3169	AA19	6	6						
23	Spider assembly	27H3225	AA20	1	1						
24	Nut for spider rivet	17H7448	AA21	3	3						
25	Washer for nut (shakeproof)	AJD7604	AA22	3	3						
26	Plate assembly—driven	27H3241	AA23	1	1						
27	Lining and rivets	8G8349	AA24	1 set	1 set	1					Correction. Was 17H7568
28	Rivet	7H3078	AA25	22	22						
29	Bearing assembly—release	7H3214	AA26	1	1						
30	Bearing	7H3277	AA27	1	1						
31	Retainer—bearing	7H3048	AA28	2	2	36					
32	Screw—clutch to flywheel	HNS0507	AA29	6	6						
33	Washer for screw (spring)	2K5319	AA30	6	6						
34	Bearing—crankshaft main (standard)	8G2257	AA31	1 set	1 set	1					
35	Washer—thrust (upper)	1G2331	AA32	2	2	12					
36	Washer—thrust (lower)	1G2332	AA33	2	2	12					
37	Seal—crankshaft rear oil	AEH519	AA34	1	1						



A2643



SERVICE PARTS LIST

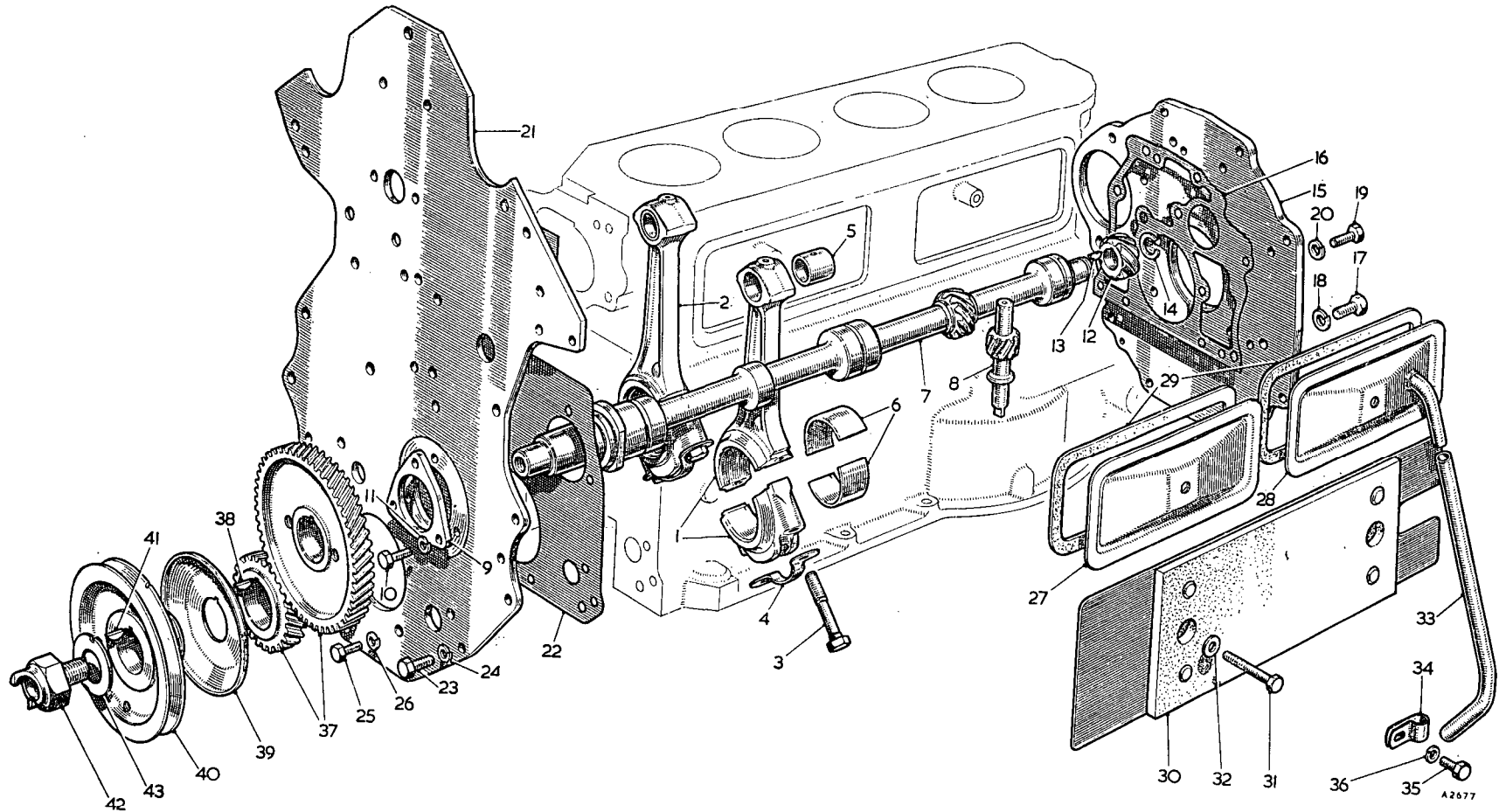
THE M.G. Series MGA TWIN CAM

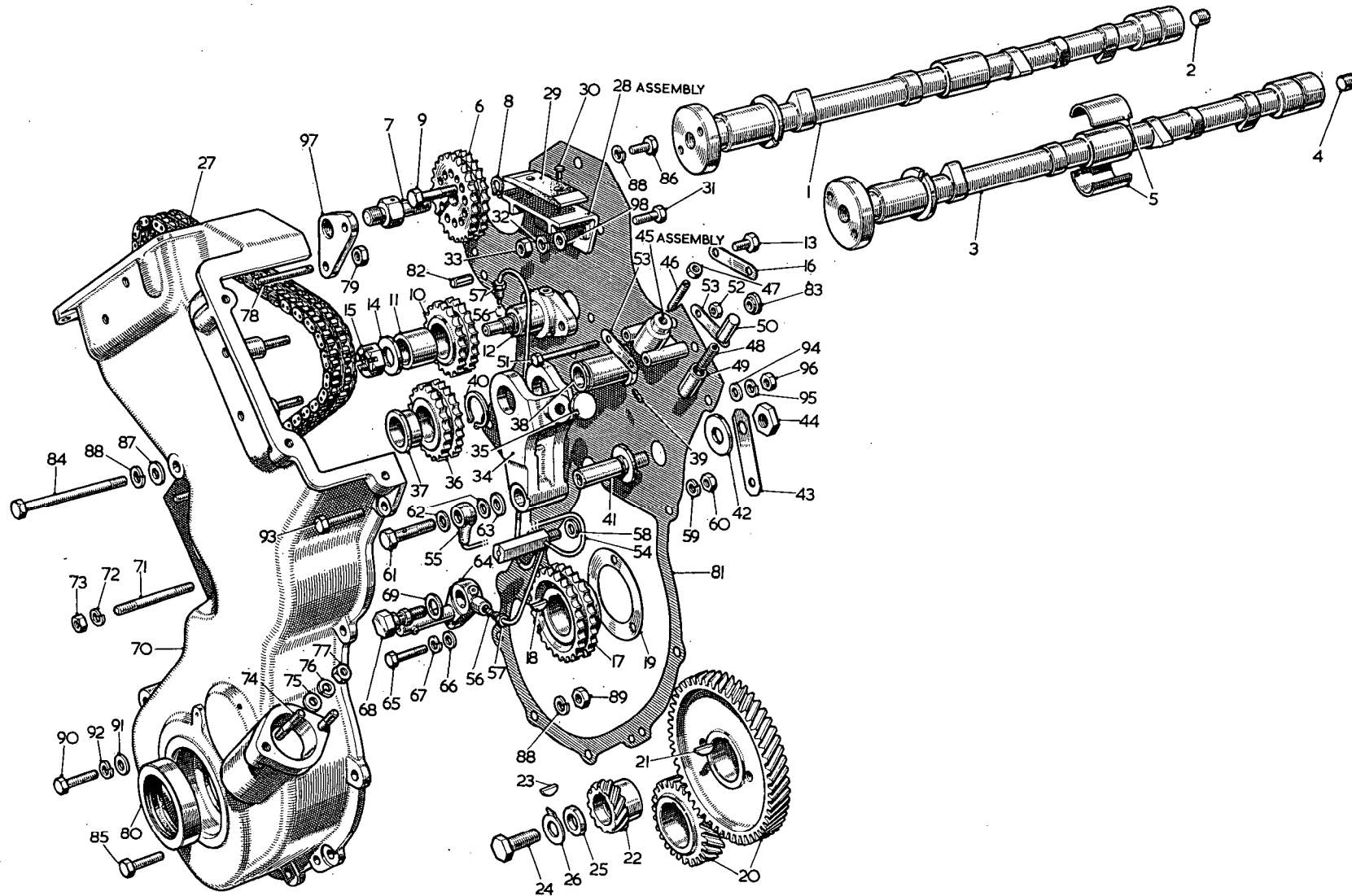
Item No.	DESCRIPTION	Commencing (E) 101		Qty. per Vehicle		Unit of Issue	Type of Vehicle	MODIFICATIONS			REMARKS
		Part Number	Illus. No.	RHD	LHD			New Part Number	Change Point	Amdt. No.	
	CONNECTING RODS—BEARINGS										
1	Connecting rod and cap +2 (Nos. 2 and 4 cylinders)	AJH5307	AB1	2	2] Replaces standard, +1, +2, +3, +4, +5] Replaces +6, +7, +8, +9, +10] Replaces +11, +12, +13, +14, +15, +16] Replaces 1, 2, 3, 4, 5] Replaces 6, 7, 8, 9, 10] Replaces 11, 12, 13, 14, 15, 16] Always use AEC882 in lieu of AEC797 prior to (E) 710
2	Connecting rod and cap +2 (Nos. 1 and 3 cylinders)	AJH5313	AB2	2	2						
3	Connecting rod and cap +7 (Nos. 2 and 4 cylinders)	AJH5308		2	2						
4	Connecting rod and cap +7 (Nos. 1 and 3 cylinders)	AJH5314		2	2						
5	Connecting rod and cap +13 (Nos. 2 and 4 cylinders)	AJH5309		2	2						
6	Connecting rod and cap +13 (Nos. 1 and 3 cylinders)	AJH5315		2	2			Fin. (E) 1342			
7	Connecting rod and cap 2 (Nos. 2 and 4 cylinders)	AJH5310		2	2						
8	Connecting rod and cap 2 (Nos. 1 and 3 cylinders)	AJH5316		2	2						
9	Connecting rod and cap 7 (Nos. 2 and 4 cylinders)	AJH5311		2	2						
10	Connecting rod and cap 7 (Nos. 1 and 3 cylinders)	AJH5317		2	2						
11	Connecting rod and cap 13 (Nos. 2 and 4 cylinders)	AJH5312		2	2						
12	Connecting rod and cap 13 (Nos. 1 and 3 cylinders)	AJH5318		2	2						
13	Connecting rod and cap (Nos. 2 and 4 cylinders)			2	2						
14	Connecting rod and cap (Nos. 1 and 3 cylinders)			2	2						
15	Bolt for cap	AEH435	AB3	8	8						
16	Washer for bolt	6K881	AB4	4	4						
17	Bush—small-end	AEC797	AB5	4	4			Com. (E) 1343			
18	Bearing for connecting rod—big-end (standard)	8G2259	AB6	1	1						
	HALF-SPEED SHAFT										
19	Shaft—half-speed	AEH444	AB7	1	1			AEH619	Com. (E) 313		
20	Spindle—oil pump driving	AEH459	AB8	1	1			AEH620	Com. (E) 313		
21	Plate—locating	AEH608	AB9	1	1						
22	Screw—plate to crankcase	HNS0406	AB10	3	3						
23	Washer for screw (spring)	LWN204	AB11	3	3						
24	Gear—tachometer drive	AEH454	AB12	1	1						
25	Key for gear	WKN304	AB13	1	1						
26	Circlip for gear	1H605	AB14	1	1						
	ENGINE MOUNTING PLATE										
27	Plate—engine mounting (rear)	AEH618	AB15	1	1						
28	Joint—plate to crankcase	1G2425	AB16	1	1	12					
29	Screw—plate to crankcase	HZS0607	AB17	8	8						
30	Washer for screw (spring)	LWZ206	AB18	8	8						
31	Screw—plate to crankcase	HZS0507	AB19	4	4						
32	Washer for screw (spring)	LWZ205	AB20	4	4	24					
33	Plate—engine mounting (front)	AEH318	AB21	1	1						
34	Joint—plate to crankcase	AEH319	AB22	1	1						
35	Screw—plate to crankcase	HNS0505	AB23	6	6						
36	Washer for screw (spring)	LWZ205	AB24	6	6	24					
37	Screw—plate to bearing cap	HNS0405	AB25	2	2						
38	Washer for screw (spring)	LWN204	AB26	2	2						

SERVICE PARTS LIST

THE M.G. Series MGA TWIN CAM

Item No.	DESCRIPTION	Commencing (E) 101		Qty. per Vehicle		Unit of Issue	Type of Vehicle	MODIFICATIONS			REMARKS
		Part Number	Illus. No.	RHD	LHD			New Part Number	Change Point	Amdt. No.	
CYLINDER SIDE COVERS											
1	Cover for cylinder side (front)	2A770	AB27	1	1						
2	Cover for cylinder side (rear)	1A2199	AB28	1	1						
3	Joint for cover	1A2203	AB29	2	2	12					
4	Heat shield	AEH584	AB80	1	1						
5	Screw—cover and heat shield to crankcase	HBZ0513	AB81	2	2						
6	Washer for screw (copper)	AEC461	AB82	2	2						
7	Pipe—vent	AEH543	AB33	1	1			AEH628] Com. (E) 657		Always supply AEH628 in lieu of AEH543 together with 1 off clip 1G1309 prior to (E) 657
8	Clip for vent pipe	11G80	AB34	1	1			1G1309			
9	Bolt—clip to crankcase	HZS0505	AB35	1	1] Fin. (E) 656		
10	Washer for bolt (spring)	LWZ205	AB36	1	1	24					
CRANKSHAFT GEAR—OIL THROWER PULLEY—STARTING NUT											
11	Gear for crankshaft	AEH426		1	1						Always use AEH79—matched pair
12	Gears for crankshaft and half-speed shaft	AEH79	AB37	1 pr.	1 pr.	1					
13	Key for gear	2H326	AB38	1	1	12					
14	Thrower—oil	AEH427	AB39	1	1						
15	Pulley for crankshaft	AEH428	AB40	1	1						
16	Key for pulley	2H326	AB41	1	1						
17	Nut—starting	1H765	AB42	1	1						
18	Washer for nut (lock)	AEH429	AB43	1	1						





A2676

SERVICE PARTS LIST

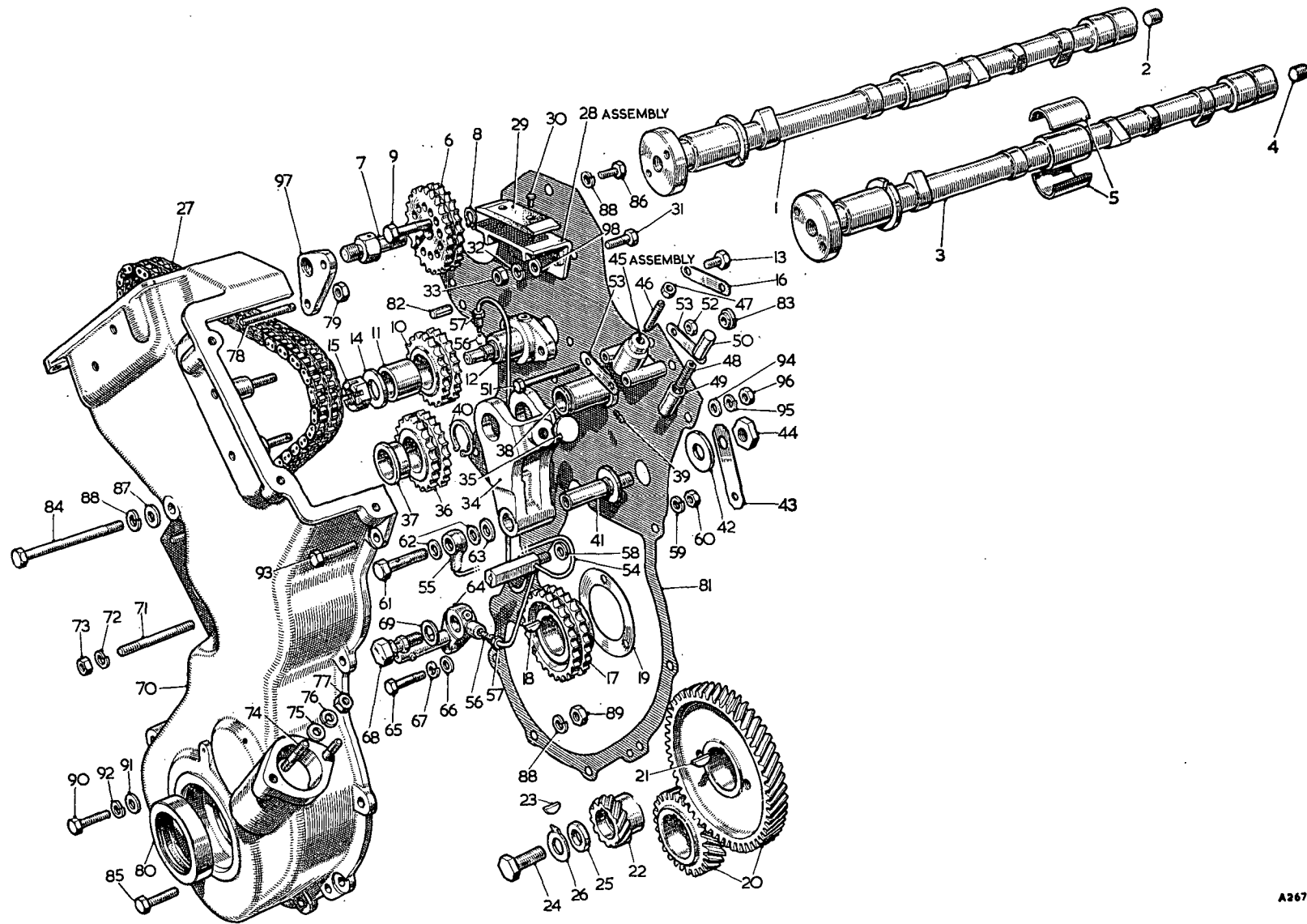
THE M.G. Series MGA TWIN CAM

Item No.	DESCRIPTION	Commencing (E) 101		Qty. per Vehicle		Unit of Issue	Type of Vehicle	MODIFICATIONS			REMARKS
		Part Number	Illus. No.	RHD	LHD			New Part Number	Change Point	Amdt. No.	
	CAMSHAFT—CAMSHAFT DRIVE										
1	Camshaft—inlet	AEH579	AC1	1	1						
2	Plug	AEH408	AC2	1	1						
3	Camshaft—exhaust	AEH581	AC3	1	1						
4	Plug	AEH408	AC4	1	1						
5	Bearing for camshaft	8G2261	AC5	1	1						
6	Sprocket for camshaft	AEH411	AC6	2	2						
7	Spindle for sprocket	AEH412	AC7	2	2						
8	Circlip for spindle	CCN108	AC8	2	2						
9	Bolt for sprocket	AEH413	AC9	4	4						
10	Sprocket—chain idler	AEH336	AC10	1	1						
11	Bush	N.S.P.	AC11	1	1						
12	Hub for sprocket	AEH25	AC12	1	1						
13	Screw—hub to engine front plate	HZS0505	AC13	2	2						
14	Washer for sprocket (thrust)	AEH339	AC14	1	1						
15	Nut for sprocket	AEH340	AC15	1	1						
16	Washer for screw (tab)	AEH341	AC16	1	1						
17	Chain wheel—half-speed shaft	AEH448	AC17	1	1						
18	Key for chain wheel	WKN505	AC18	1	1						
19	Shim for half-speed shaft (.002")	AEH446	AC19	A/R	A/R						
20	Shim for half-speed shaft (.003")	AEH447		A/R	A/R						
21	Gear—half-speed shaft	AEH449		1	1						Always use AEH79— matched pair
22	Gears for crankshaft and half-speed shaft	AEH79	AC20	1 pr.	1 pr.	1					
23	Key for gear	WKN505	AC21	1	1						
24	Gear—distributor drive	AEH450	AC22	1	1						
25	Key for gear	WKN304	AC23	1	1						
26	Bolt for half-speed shaft	AEH451	AC24	1	1						
27	Washer for bolt	AEH452	AC25	1	1						
28	Washer for bolt (lock)	AEH453	AC26	1	1						
29	Chain for camshaft drive	AEH372	AC27	1	1						
30	Bracket assembly—chain vibration damper	AEH332	AC28	2	2						
31	Damper	AEH334	AC29	2	2						
32	Rivet for damper	CRS0207	AC30	4	4						
33	Screw—damper bracket to engine front plate	HZS0506	AC31	4	4						
34	Washer for screw	AEC398	AC98	4	4						
35	Washer for screw (spring)	LWZ205	AC32	4	4	24					
36	Nut for screw	FNZ105	AC33	4	4						
37	Fork—chain adjuster	AEH344	AC34	1	1						
38	Pad—thrust	AEH346	AC35	1	1						
39	Sprocket—chain adjuster fork	AEH347	AC36	1	1						
40	Bush	N.S.P.	AC37	2	2						
41	Hub for sprocket	AEH349	AC38	1	1						
42	Peg—locating	AEH540	AC39	1	1						
43	Circlip for hub	CCN118	AC40	1	1						
44	Pivot—chain adjuster fork	AEH342	AC41	1	1						
45	Washer for pivot (plain)	PWZ208	AC42	1	1						
46	Washer for pivot (tab)	AEH343	AC43	1	1						
47	Nut for pivot	FNZ208	AC44	1	1			AEH623	Com. (E) 329		Always supply AEH623 prior to (E) 329

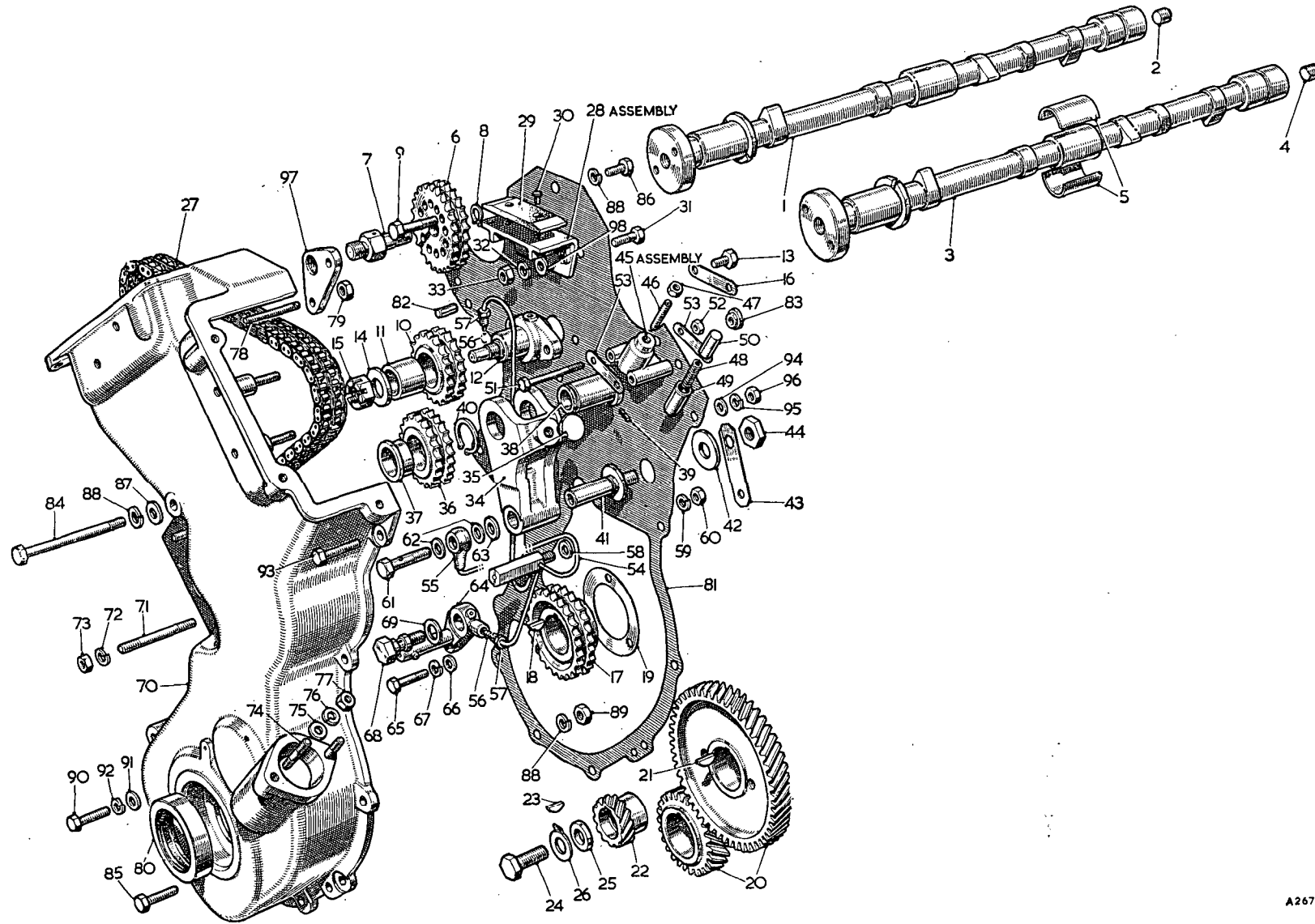
SERVICE PARTS LIST

THE M.G. Series MGA TWIN CAM

Item No.	DESCRIPTION	Commencing (E) 101		Qty. per Vehicle		Unit of Issue	Type of Vehicle	MODIFICATIONS			REMARKS
		Part Number	Illus. No.	RHD	LHD			New Part Number	Change Point	Amdt. No.	
	Camshaft—Camshaft Drive—continued										
1	Adjuster—chain	AEH27	AC45	1	1						
2	Screw	AEH362	AC46	1	1						
3	Nut for screw (lock)	51K1712	AC47	1	1						
4	Spring	AEH561	AC48	1	1						
5	Thimble	AEH368	AC49	1	1						
6	Plunger	AEH369	AC50	1	1						
7	Bolt—adjuster to engine front plate	AEH370	AC51	2	2						
8	Nut for bolt	FNZ104	AC52	2	2						
9	Washer for bolt (tab)	AEH371	AC53	2	2						
10	Pipe assembly—oil feed	AEH351	AC54	1	1						
11	Banjo	N.S.P.	AC55	1	1						Correction. Was AEH352
12	Olive	6K649	AC56	2	2						
13	Nut for olive	2A459	AC57	2	2						
14	Joint for oil feed pipe pillar	6K4973	AC58	1	1						
15	Washer for oil feed pipe pillar (spring)	LWZ205	AC59	1	1	24					
16	Nut for oil feed pipe pillar	FNZ105	AC60	1	1						
17	Bolt—oil feed pipe to adjuster fork pivot (banjo)	AEH359	AC61	1	1						
18	Washer for banjo bolt	AEC346	AC62	2	2						
19	Washer for adjuster fork pivot	AEH515	AC63	1	1						
20	Bracket for oil feed pipe	AEH357	AC64	1	1						
21	Screw—bracket to crankcase	HNS0409	AC65	1	1						
22	Washer for screw (plain)	PWN104	AC66	1	1						
23	Washer for screw (spring)	LWN204	AC67	1	1						
24	Bolt—bracket to crankcase (banjo)	AEH360	AC68	1	1						
25	Washer for banjo bolt	AEH520	AC69	1	1						
26	Case—front timing	AEH28	AC70	1	1						
27	Stud for water pump	CHS0520	AC71	3	3						
28	Washer for stud (spring)	LWZ205	AC72	3	3	24					
29	Nut for stud	FNZ105	AC73	3	3						
30	Stud for distributor drive housing	CLS2511	AC74	2	2						
31	Washer for stud (plain)	PWZ105	AC75	2	2						
32	Washer for stud (spring)	LWZ205	AC76	2	2	24					
33	Nut for stud	FNZ105	AC77	2	2						
34	Stud—camshaft sprocket support plate	AEH375	AC78	4	4						
35	Nut for stud	FNN105	AC79	4	4						
36	Oil seal	AEJ5	AC80	1	1						
37	Joint—timing case to engine front plate	AEH377	AC81	1	1						
38	Dowel—timing case to engine front plate	AEH307	AC82	1	1						
39	Clinch nut—timing case to engine front plate	AEH320	AC83	2	2						
40	Bolt—timing case to engine front plate	AEH378	AC84	1	1						



A2676



A2676

SERVICE PARTS LIST

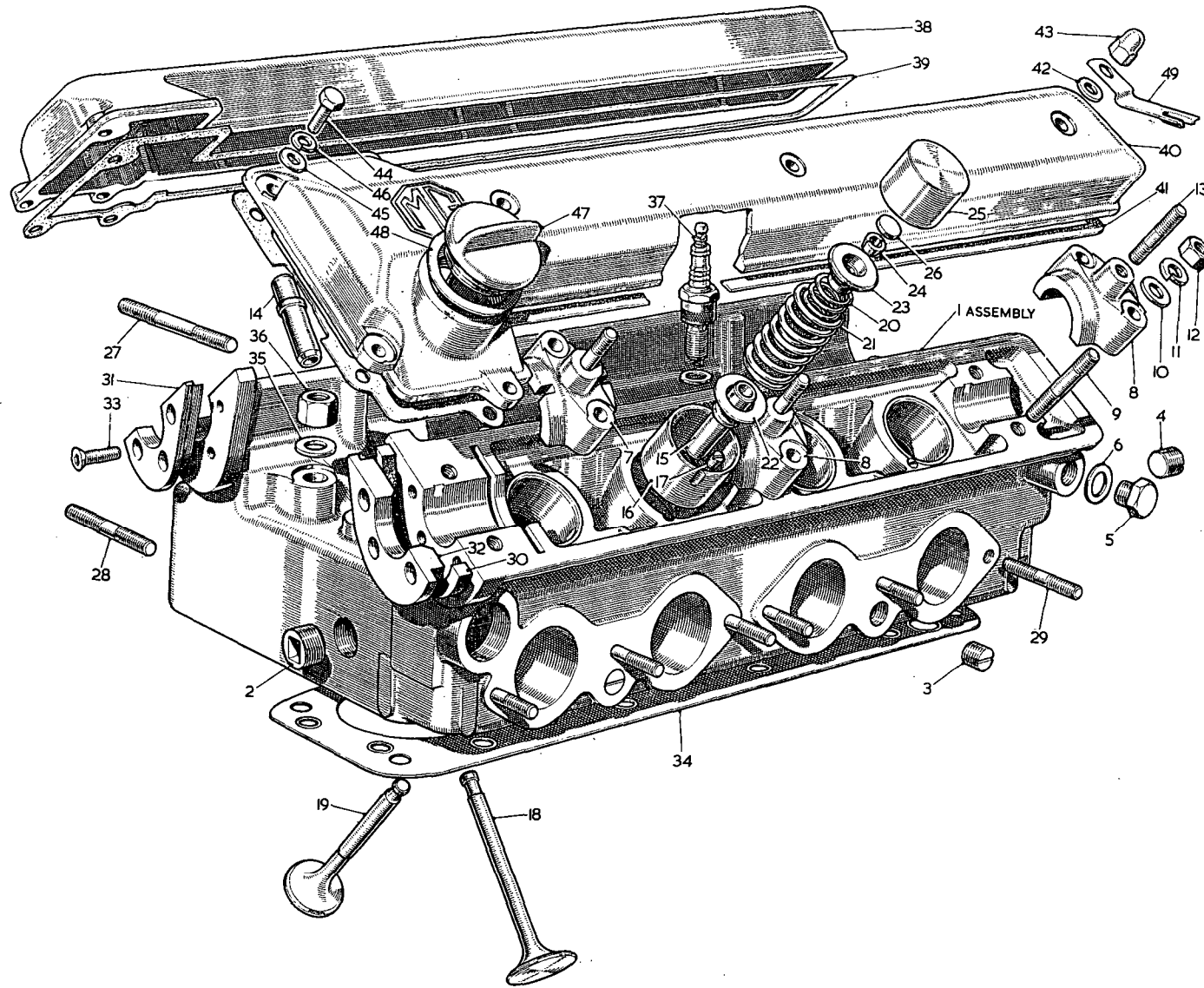
THE M.G. Series MGA TWIN CAM

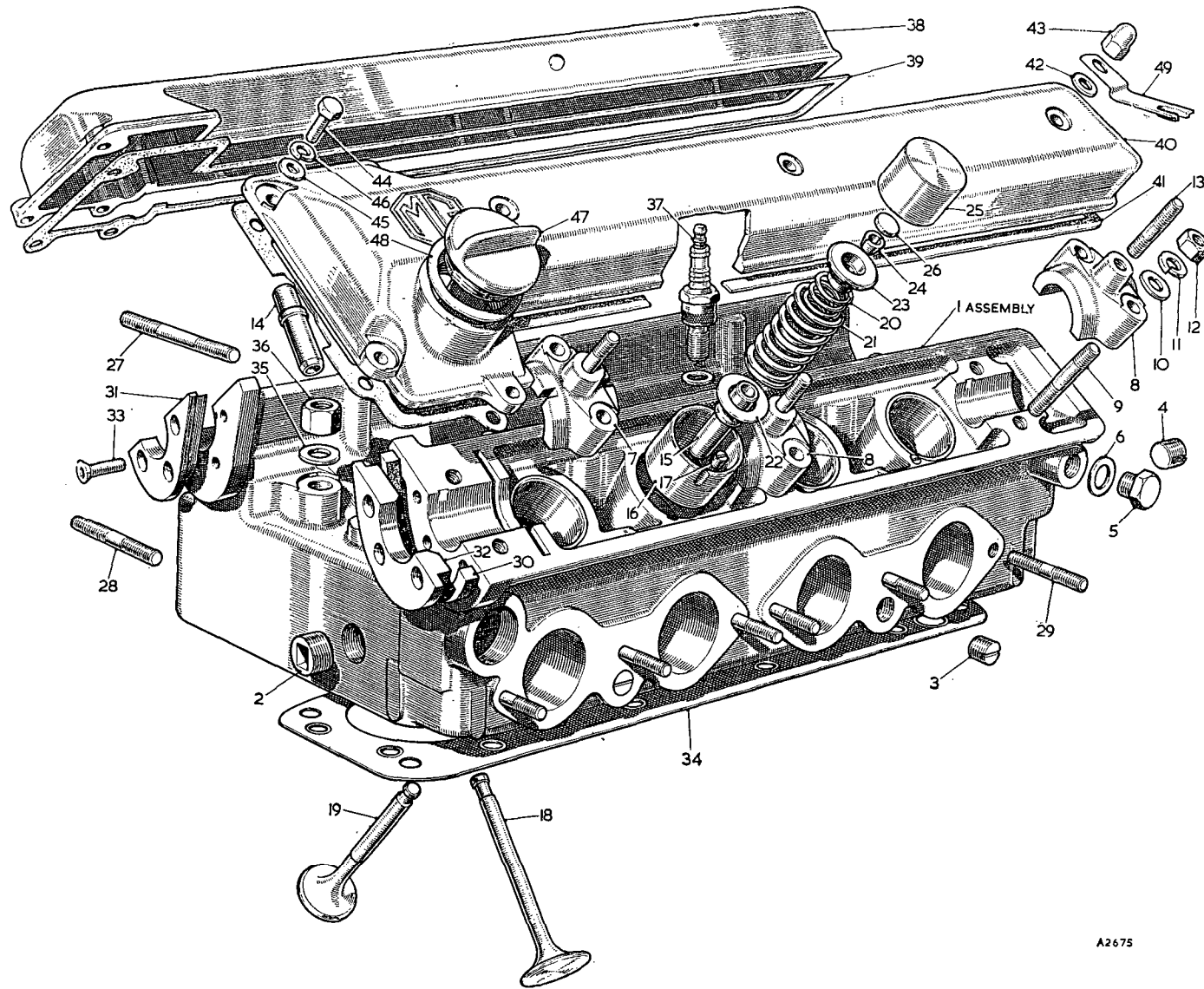
Item No.	DESCRIPTION	Commencing (E) 101		Qty. per Vehicle		Unit of Issue	Type of Vehicle	MODIFICATIONS			REMARKS
		Part Number	Illus. No.	RHD	LHD			New Part Number	Change Point	Amdt. No.	
	Camshaft—Camshaft Drive—continued										
1	Screw—timing case to engine front plate (1" long)	HZS0508	AC85	.5	.5						
2	Screw—timing case to engine front plate (3/8" long)	ZCS0507	AC86	2/1	2/1						Quantity reduced at (E) 556
3	Bolt—cable clamp and timing case to engine front plate1	.1			HCZ0514	Com. (E) 556		
4	Washer for bolt and screw (plain)	PWZ105	AC87	.7	.7						
5	Washer for bolt and screw (spring)	LWZ205	AC88	.8	.8	24					
6	Nut for screw	FNZ105	AC89	.5	.5						
7	Bolt—timing case to engine front plate and crankcase (1 3/8" long)	HBZ0509	AC90	.3	.3						
8	Washer for bolt (plain)	PWZ105	AC91	.3	.3						
9	Washer for bolt (spring)	LWZ205	AC92	.3	.3	24					
10	Bolt—timing case and thermostat housing to front plate (1 1/4" long)	HBZ0510	AC93	.1	.1						
11	Washer for bolt (plain)	PWZ105	AC94	.1	.1						
12	Washer for bolt (spring)	LWZ205	AC95	.1	.1	24					
13	Nut for bolt	FNZ105	AC96	.1	.1						
14	Plate—camshaft sprocket support	AEH376	AC97	2	2						

SERVICE PARTS LIST

THE M.G. Series MGA TWIN CAM

Item No.	DESCRIPTION	Commencing (E) 101		Qty. per Vehicle		Unit of Issue	Type of Vehicle	MODIFICATIONS			REMARKS
		Part Number	Illus. No.	RHD	LHD			New Part Number	Change Point	Amdt. No.	
	CYLINDER HEAD—VALVES—GUIDES— SPRINGS—TAPPETS										
1	Cylinder head with valve assembly	AEH39		1	1						
2	Cylinder head with valve guides—assembly	AEH29	AD1	1	1						
3	Plug for core hole (screwed)	6K499	AD2	5	5						
4	Plug for core hole (screwed)	AEH388	AD3	5	5						
5	Plug for core hole (screwed)	AEH606	AD4	1	1						
6	Plug for oil gallery (screwed)	2K4991	AD5	1	1						
7	Washer for plug (copper)	AEC343	AD6	1	1						
8	Cap for camshaft bearing (front)	N.S.P.	AD7								
9	Cap for camshaft bearing (centre and rear)	N.S.P.	AD8								
10	Stud for bearing cap	AEH390	AD9	12	12						
11	Washer for stud (plain)	PWN106	AD10	12	12						
12	Washer for stud (spring)	LWN206	AD11	12	12						
13	Nut for stud	FNN106	AD12	12	12						
14	Stud—bearing cap to top cover	<i>CHS</i> CHS0512	AD13	6	6			<i>CHS0512</i>			
15	Guide—inlet valve	AEH386	AD14	4	4						
16	Guide—exhaust valve	AEH387	AD15	4	4						
17	Bush—tappet		AD16	8	8			N.S.P.] Com. (E) 1587		
18	Plug (screwed)		AD17	8	8			N.S.P.			
19	Valve—inlet	AEH394	AD18	4	4						
20	Valve—exhaust	AEH571	AD19	4	4						
21	Spring for valve (inner)	AEH562	AD20	8	8		<i>USE</i>	<i>AEH 669</i>		426	436
22	Spring for valve (outer)	AEH565	AD21	8	8			<i>AEH 668</i>			
23	Washer for spring (thrust)	AEH396	AD22	8	8						
24	Clip for spring	AEH564	AD23	8	8						
25	Retainer for spring (half)	AEH521	AD24	16	16						
26	Tappet	AEH401	AD25	8	8		<i>AEH 677</i>	AEH651	Com. (E) 1087	<i>518</i>	Always supply 8 off AEH651 prior to (E) 1087
27	Shim—tappet adjustment (.086")	AEH400	AD26	A/R	A/R						
28	Shim—tappet adjustment (.088")	AEH040002		A/R	A/R						Identification No. 1
29	Shim—tappet adjustment (.090")	AEH040004		A/R	A/R						Identification No. 2
30	Shim—tappet adjustment (.092")	AEH040006		A/R	A/R						Identification No. 3
31	Shim—tappet adjustment (.094")	AEH040008		A/R	A/R						Identification No. 4
32	Shim—tappet adjustment (.096")	AEH040010		A/R	A/R						Identification No. 5
33	Shim—tappet adjustment (.098")	AEH040012		A/R	A/R						Identification No. 6
34	Shim—tappet adjustment (.100")	AEH040014		A/R	A/R						Identification No. 7
35	Shim—tappet adjustment (.102")	AEH040016		A/R	A/R						Identification No. 8
36	Shim—tappet adjustment (.104")	AEH040018		A/R	A/R						Identification No. 9
37	Shim—tappet adjustment (.106")	AEH040020		A/R	A/R						Identification No. 10
38	Shim—tappet adjustment (.108")	AEH040022		A/R	A/R						Identification No. 11
39	Shim—tappet adjustment (.110")	AEH040024		A/R	A/R						Identification No. 12
40	Shim—tappet adjustment (.112")	AEH040026		A/R	A/R						Identification No. 13
41	Shim—tappet adjustment (.114")	AEH040028		A/R	A/R						Identification No. 14
42	Shim—tappet adjustment (.116")	AEH040030		A/R	A/R						Identification No. 15





A2675

SERVICE PARTS LIST

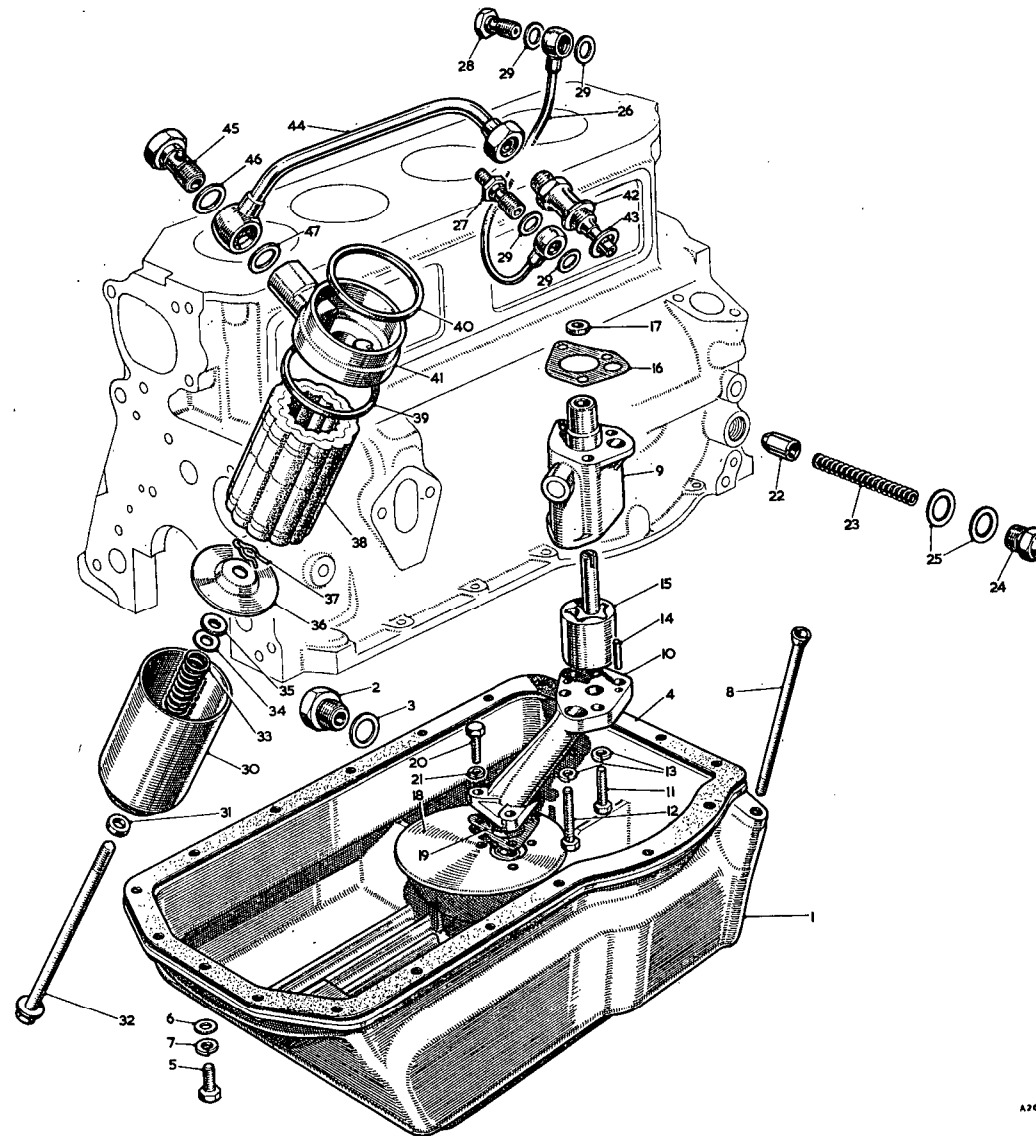
THE M.G. Series MGA TWIN CAM

Item No.	DESCRIPTION	Commencing (E) 101		Qty. per Vehicle		Unit of Issue	Type of Vehicle	MODIFICATIONS			REMARKS
		Part Number	Illus. No.	RHD	LHD			New Part Number	Change Point	Amdt. No.	
	Cylinder Head—Valves—Guides—Springs—Tappets—continued										
1	Stud for inlet manifold	AEH583	AD27	2	2						
2	Stud for inlet manifold	CLS2613	AD28	5	5						
3	Stud for exhaust manifold	CHS2513	AD29	6	6						
4	Oil seal	AEH404	AD30	2	2						
5	Housing for oil seal (inlet)	AEH402	AD31	1	1						
6	Housing for oil seal (exhaust)	AEH403	AD32	1	1						
7	Screw for housing	AEJ3	AD33	6	6						
8	Joint for cylinder head	AEH548	AD34	1	1						
9	Washer—cylinder head stud (plain)	AEH632	AD35	10	10						
10	Nut—cylinder head stud	AEC139	AD36	10	10						
11	Plug—sparking	97H611	AD37	4	4						
	CYLINDER HEAD COVERS—OIL FILLER—OIL INDICATOR BRACKET										
12	Cover—cylinder head top (inlet)	AEH414	AD38	1	1						
13	Joint for inlet cover	AEH415	AD39	1	1						
14	Cover—cylinder head top (exhaust)	AEH416	AD40	1	1						
15	Joint for exhaust cover	AEH417	AD41	1	1						
16	Washer—cover stud (copper)	AEC398	AD42	6	6						
17	Nut for cover stud (cap)	AEH418	AD43	6	6						
18	Screw—cover to timing case	ZCS0509	AD44	6/4	6/4						Quantity reduced at (E) 556
19	Bolt—clip and cover to timing case			2	2			HCZ0510	Com. (E) 556		
20	Washer for screw (plain)	PWZ105	AD45	6	6						
21	Washer for screw (spring)	LWZ205	AD46	6	6	24					
22	Cap—oil filler	AEH419	AD47	1	1						
23	Washer for filler cap	AEH420	AD48	1	1						
24	Bracket—oil indicator steady	AEH570	AD49	1	1						

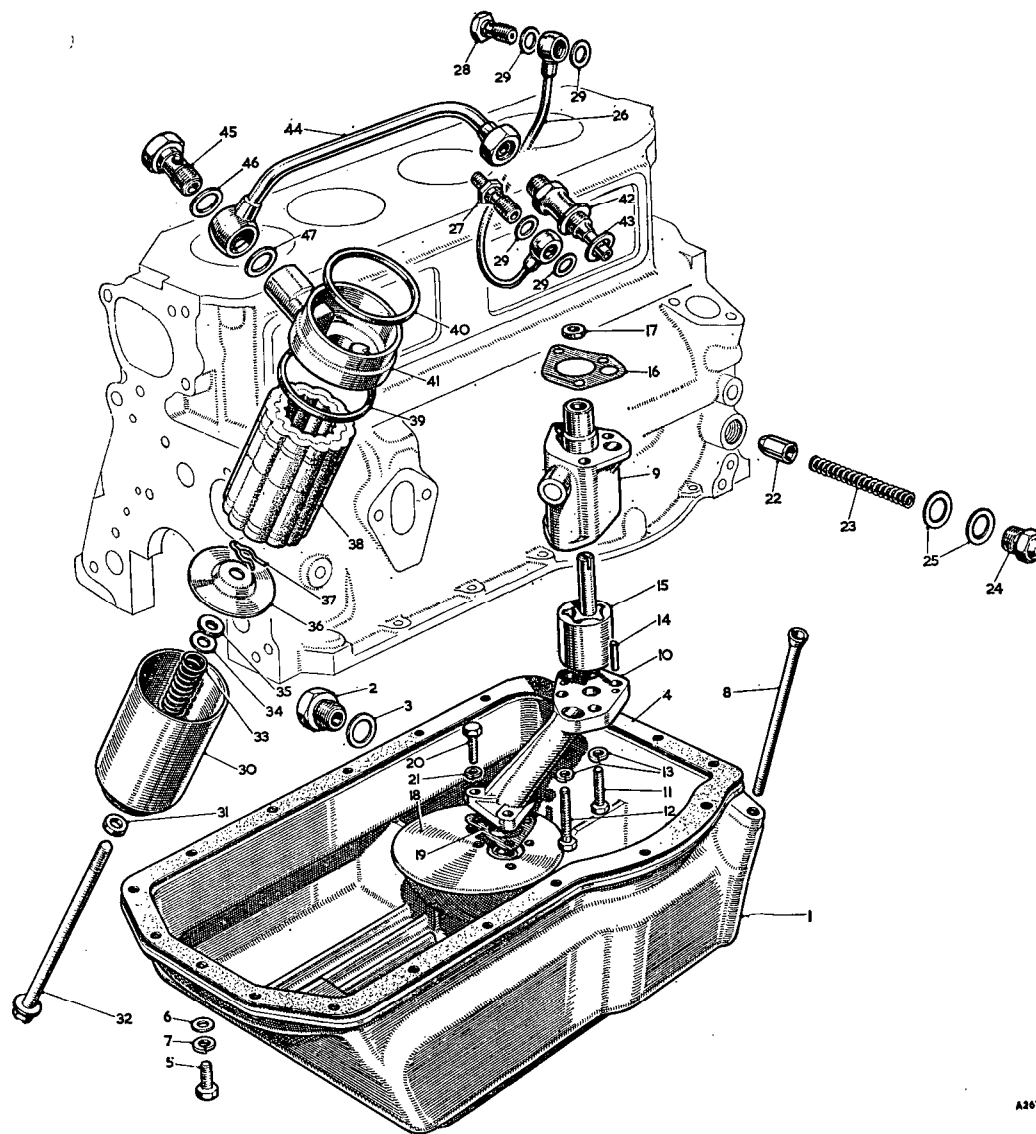
SERVICE PARTS LIST

THE M.G. Series MGA TWIN CAM

Item No.	DESCRIPTION	Commencing (E) 101		Qty. per Vehicle		Unit of Issue	Type of Vehicle	MODIFICATIONS			REMARKS
		Part Number	Illus. No.	RHD	LHD			New Part Number	Change Point	Amdt. No.	
	SUMP—OIL LEVEL INDICATOR TUBE										
1	Sump—oil	AEH315	AE1	1	1						
2	Plug for sump—drain	2H4685	AE2	1	1						
3	Washer for plug (copper)	6K431	AE3	1	1						
4	Joint—sump to crankcase	1G2290	AE4	1	1	12					
5	Screw—sump to crankcase	HZS0407	AE5	19	19						
6	Washer for screw (plain)	PWZ104	AE6	19	19	12					
7	Washer for screw (spring)	LWZ204	AE7	19	19	12					
8	Tube—oil level indicator	AEH536	AE8	1	1						
	OIL PUMP—OIL RELEASE VALVE—OIL FEED PIPE										
9	Pump assembly—oil	1H1191		1	1						
10	Body (with plug)	7H1790	AE9	1	1						
11	Cover	17H1712	AE10	1	1						
12	Screw for cover (short)	HZS0408	AE11	1	1						
13	Screw for cover (long)	HZS0414	AE12	1	1						
14	Washer for screw (spring)	LWN204	AE13	2	2						
15	Dowel	7H1793	AE14	2	2						
16	Shaft with rotors—driving	7H1792	AE15	1	1						
17	Joint—pump to crankcase	11G10	AE16	1	1	12					
18	Washer for spindle (thrust)	AEH460	AE17	1	1						
19	Strainer assembly—oil	1H1192	AE18	1	1						
20	Joint—strainer to pump	1H1198	AE19	1	1						
21	Screw—strainer to pump	HNS0406	AE20	3	3		HNS0407	Com. (E) 499		Always use HNS0407 prior to (E) 499	
22	Washer for screw (spring)	LWN304	AE21	3	3						
23	Valve—oil release	1G1452	AE22	1	1						
24	Spring for valve	1H756	AE23	1	1						
25	Cap nut for valve	1A2206	AE24	1	1						
26	Washer for cap nut	2K4982	AE25	2	2						
27	Pipe—oil feed (crankcase to cylinder head)	AEH310	AE26	1	1						
28	Banjo bolt for pipe (crankcase end)	AEH313	AE27	1	1						
29	Banjo bolt for pipe (cylinder head end)	AEH602	AE28	1	1						
30	Washer for banjo bolt	6K500	AE29	4	4						
	OIL FILTER (EXTERNAL)										
31	Filter—oil	1H1067		1	1						
32	Body assembly	1H1069	AE30	1	1						
33	Washer—sealing (bottom)	7H1948	AE31	1	1						
34	Bolt—centre	7H1965	AE32	1	1						
35	Spring	7H1764	AE33	1	1						
36	Washer (steel)	7H1969	AE34	1	1						
37	Washer (felt)	7H1968	AE35	1	1						



A2674



A2674

SERVICE PARTS LIST

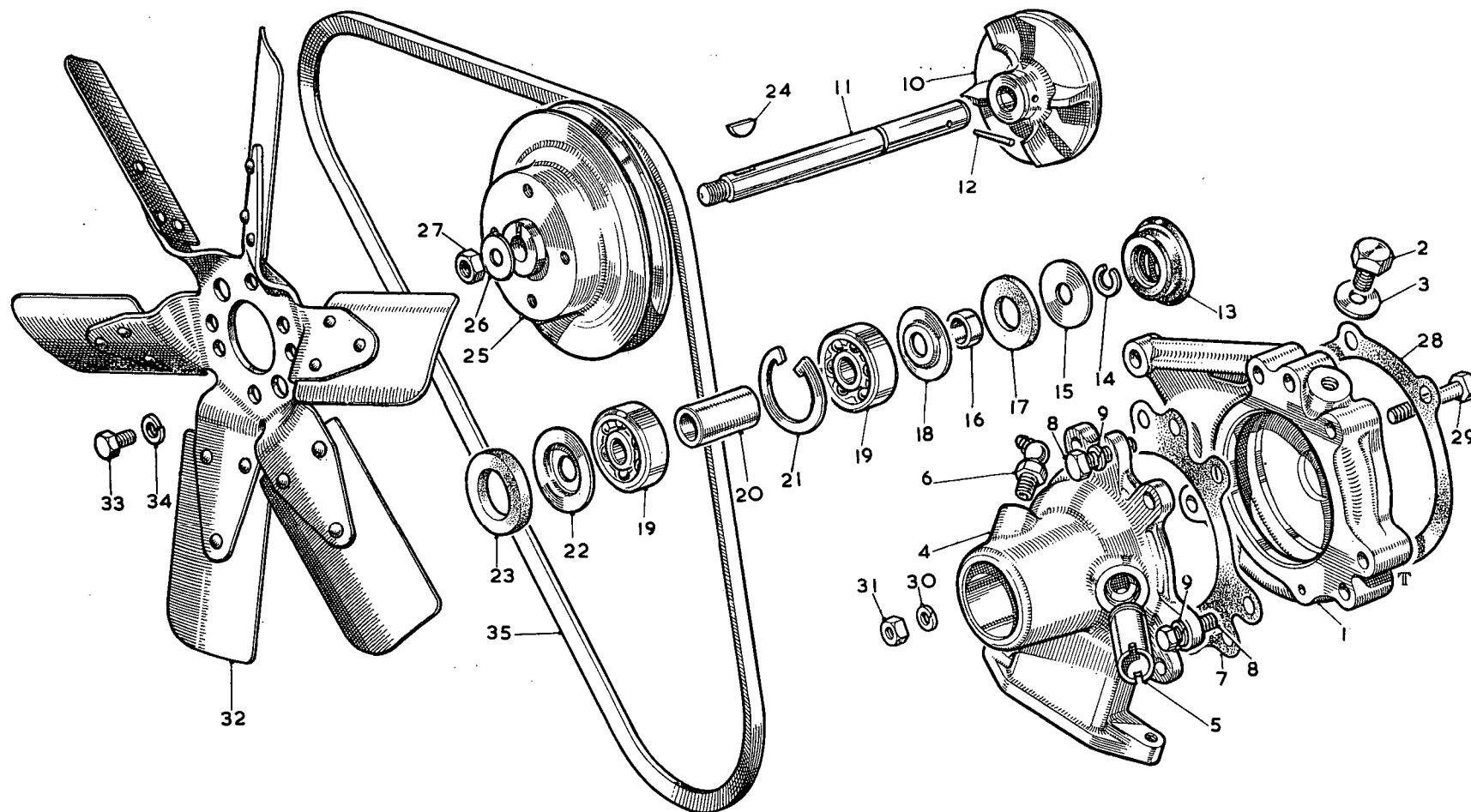
THE M.G. Series MGA TWIN CAM

Item No.	DESCRIPTION	Commencing (E) 101		Qty. per Vehicle		Unit of Issue	Type of Vehicle	MODIFICATIONS			REMARKS
		Part Number	Illus. No.	RHD	LHD			New Part Number	Change Point	Amdt. No.	
	Oil Filter (External)—continued										
1	Plate—pressure	17H846	AE36	1	1						
2	Circlip	7H1952	AE37	1	1						
3	Element	8G683	AE38	1	1						
4	Seal—body to head	8G619	AE39	1	1	12					
5	Seal—head to crankcase	8G619	AE40	1	1	12					
6	Head assembly	1H1068	AE41	1	1						
7	Adaptor—oil filter connection	1H922	AE42	1	1						
8	Joint for adaptor (copper)	6K501	AE43	1	1						
9	Pipe assembly—filter to crankcase	AEH598	AE44	1	1						
10	Screw—pipe banjo union to crankcase	1K2142	AE45	1	1						
11	Washer for screw—outer (copper)	1H898	AE46	1	1						
12	Washer for screw—inner (copper)	6K501	AE47	1	1						
	<i>OIL COOLER KIT</i>	<i>8G2287</i>								<i>511</i>	<i>FOR BREAKDOWN OF PART</i>

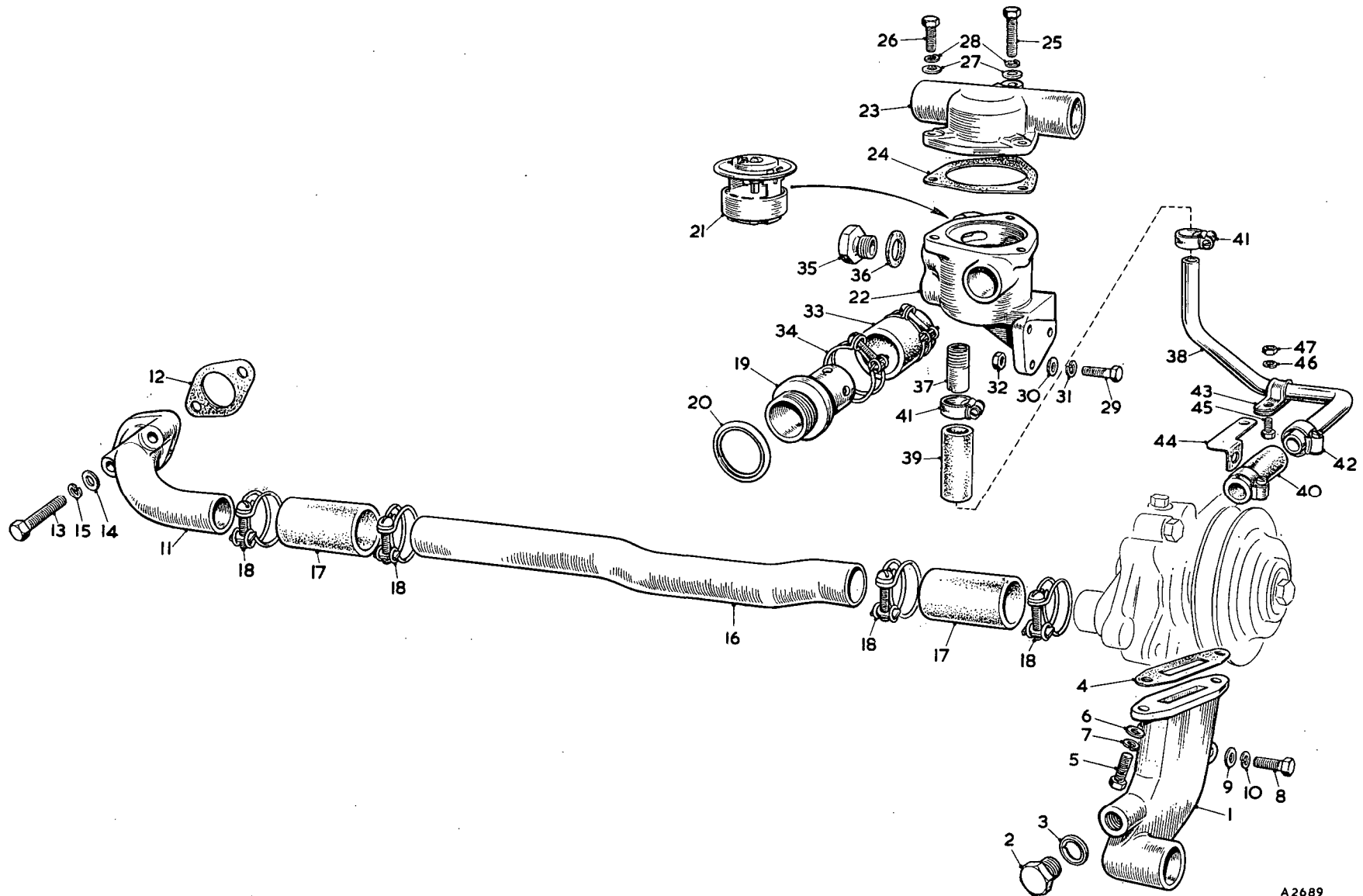
SERVICE PARTS LIST

THE M.G. Series MGA TWIN CAM

Item No.	DESCRIPTION	Commencing (E) 101		Qty. per Vehicle		Unit of Issue	Type of Vehicle	MODIFICATIONS			REMARKS
		Part Number	Illus. No.	RHD	LHD			New Part Number	Change Point	Amdt. No.	
	WATER PUMP—FAN PULLEY										
1	Pump assembly—water (R)	AEH461		1	1						
2	Scroll	AEH553	AF1	1	1						
3	Plug for scroll	ADP605	AF2	1	1						
4	Washer for plug (fibre)	6K705	AF3	1	1						
5	Body	AEH464	AF4	1	1						
6	Connection—by-pass	AEH470	AF5	1	1						
7	Greaser	UHN305	AF6	1	1						
8	Joint—scroll to body	AEH463	AF7	1	1						
9	Screw—body to scroll	HZS0508	AF8	2	2						
10	Washer for screw (spring)	LWZ205	AF9	2	2	24					
11	Vane	AEH466	AF10	1	1						
12	Spindle	AEH465	AF11	1	1						
13	Pin—vane to spindle (taper)	TPS0508	AF12	1	1						
14	Seal	AEB156	AF13	1	1						
15	Circlip for spindle	AEB151	AF14	1	1						
16	Cover—dust (plain)	AEH525	AF15	1	1						
17	Collar for spindle	AEH523	AF16	1	1						
18	Washer (felt)	AEH524	AF17	1	1						
19	Cover—dust (dished)	AEH526	AF18	1	1						
20	Bearing	AEF136	AF19	2	2						
21	Tube—bearing distance	AEH467	AF20	1	1						
22	Circlip for bearing	AEH529	AF21	1	1						
23	Cover—dust—spindle (dished)	AEH527	AF22	1	1						
24	Washer for spindle (felt)	AEH528	AF23	1	1						
25	Key for pulley	WKN404	AF24	1	1						
26	Pulley	AEH472	AF25	1	1						
27	Washer for spindle nut (lock)	AEH530	AF26	1	1						
28	Nut for spindle	FNZ105	AF27	1	1						
29	Joint—pump to timing case	AEH471	AF28	1	1						
30	Bolt—pump to engine front plate	HBZ0522	AF29	1	1						
31	Washer for bolt (spring)	LWZ205	AF30	1	1	24					
32	Nut for bolt	FNZ105	AF31	1	1						



A0296A



A2689

SERVICE PARTS LIST

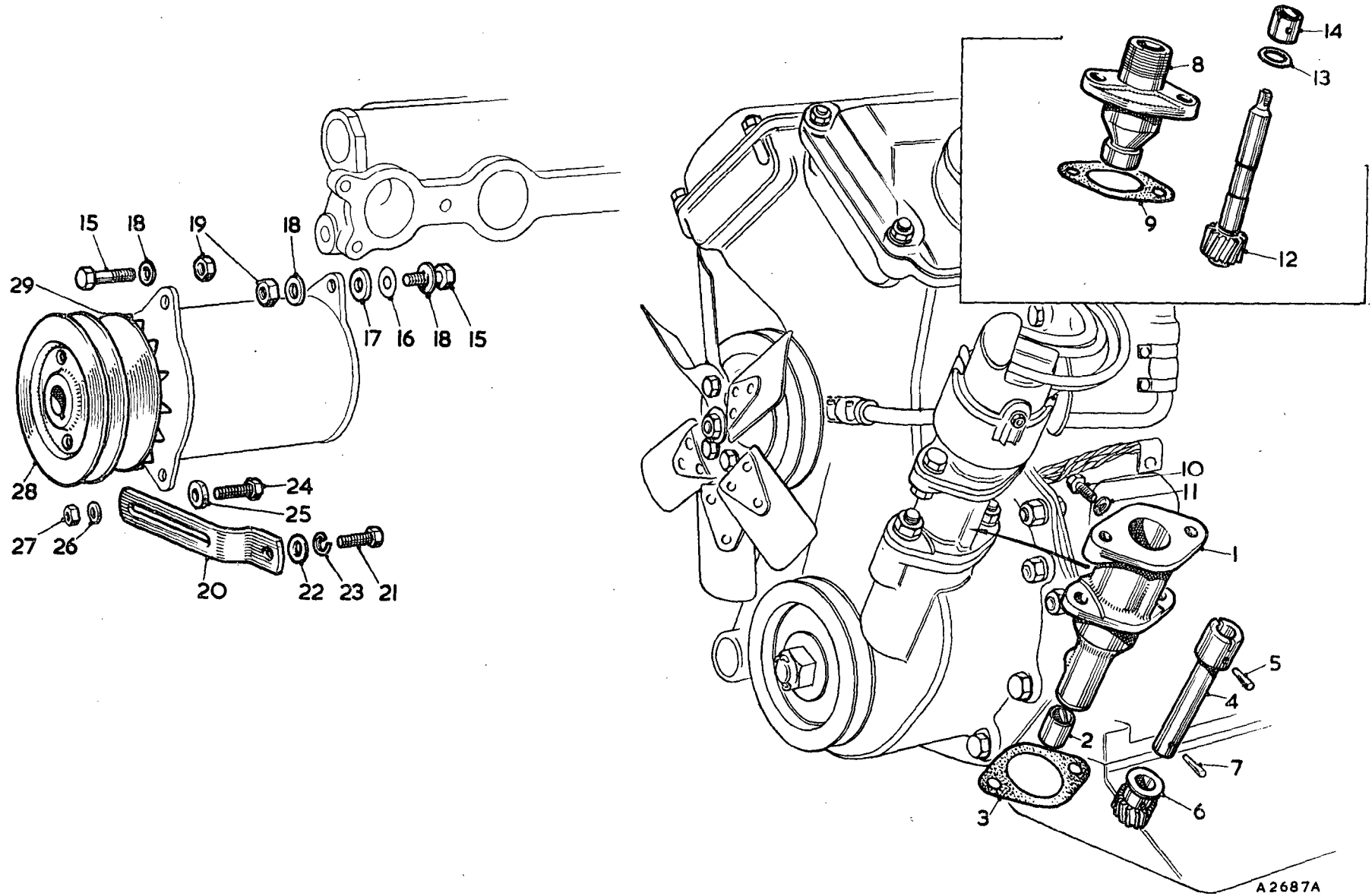
THE M.G. Series MGA TWIN CAM

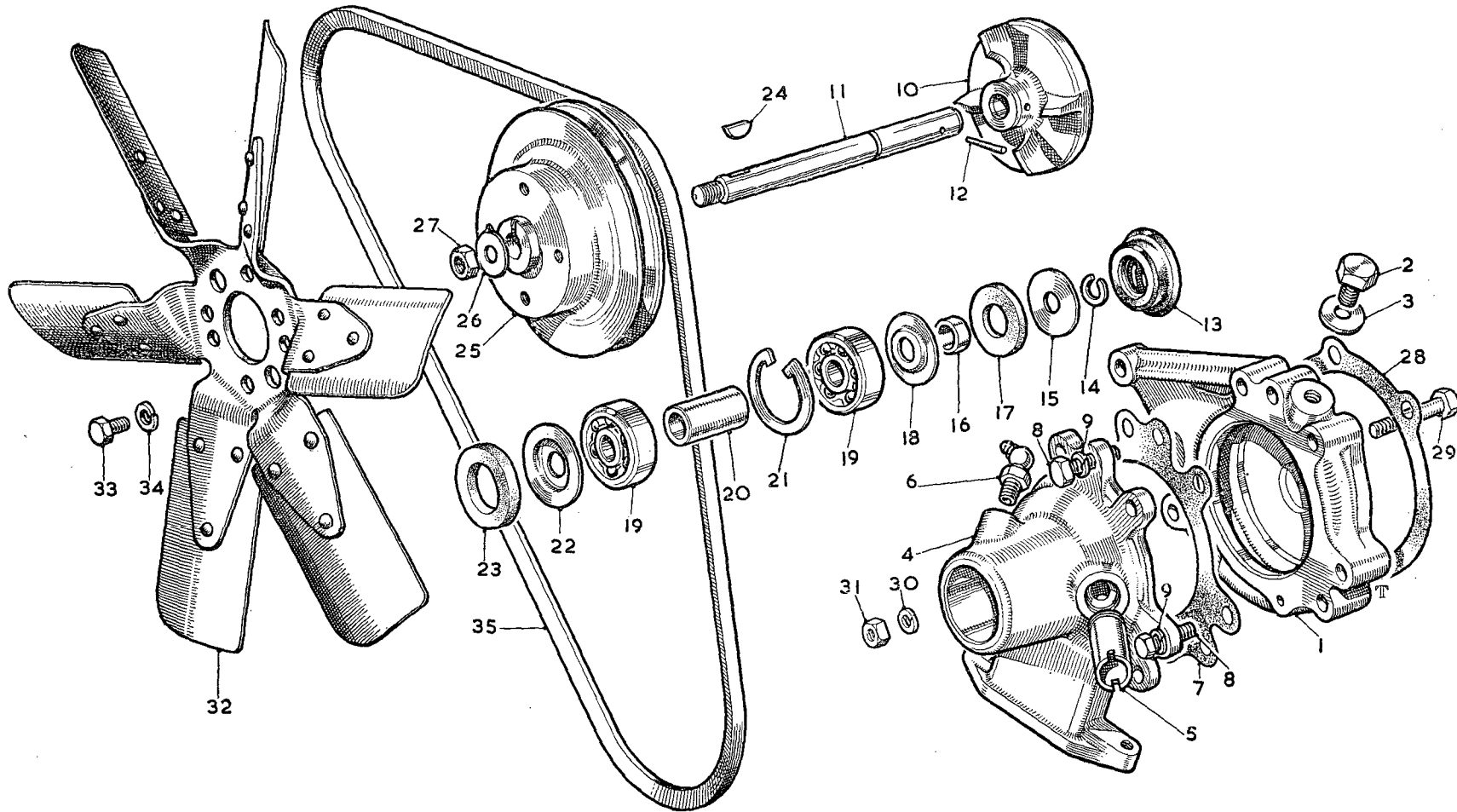
Item No.	DESCRIPTION	Commencing (E) 101		Qty. per Vehicle		Unit of Issue	Type of Vehicle	MODIFICATIONS			REMARKS
		Part Number	Illus. No.	RHD	LHD			New Part Number	Change Point	Amdt. No.	
	WATER PIPES—THERMOSTAT										
1	Pipe—water inlet	AEH469	AG1	1	1						
2	Plug for pipe	2K8982	AG2	1	1] Not required when heater is fitted
3	Washer for plug (copper)	51K8811	AG3	1	1						
4	Joint—pipe to water pump	AEH468	AG4	1	1						
5	Screw—pipe to water pump	HZS0508	AG5	2	2						
6	Washer for screw (plain)	PWZ105	AG6	2	2						
7	Washer for screw (spring)	LWZ205	AG7	2	2	24					
8	Bolt—pipe to timing case	ZCS0508	AG8	1	1						
9	Washer for bolt (plain)	PWZ105	AG9	1	1						
10	Washer for bolt (spring)	LWZ205	AG10	1	1	24					
11	Elbow—water inlet	AEH422	AG11	1	1			AEH631	Com. (E) 581		
12	Joint—elbow to cylinder head	AEH423	AG12	1	1						
13	Bolt—elbow to cylinder head	HCZ0513	AG18	2	2						
14	Washer for bolt (plain)	PWZ105	AG14	2	2						
15	Washer for bolt (spring)	LWZ205	AG15	2	2	24					
16	Pipe—pump to elbow	AEH421	AG16	1	1			AEH630	Com. (E) 574		
17	Hose for pipe	AEH522	AG17	2	2						
18	Clip for hose	8G632	AG18	4	4						
19	Pipe—water outlet	AEH393	AG19	1	1						
20	Washer—pipe to cylinder head (copper)	AEJ4	AG20	1	1						
21	Thermostat	11G291	AG21	1	1			AEJ14	Com. (E) 194		Always use AEJ14 prior to (E) 194
22	Housing—thermostat	AEH477	AC22	1	1						
23	Cover for thermostat housing	AEH479	AG23	1	1						
24	Joint for cover	AEH478	AG24	1	1						
25	Bolt for cover	HCZ0414	AG25	1	1						
26	Screw for cover	ZCS0407	AG26	2	2						
27	Washer for bolt and screw (plain)	PWZ104	AG27	3	3	12					
28	Washer for bolt and screw (spring)	LWZ204	AG28	3	3	12					
29	Screw—housing to engine front plate	HZS0508	AG29	2	2						
30	Washer for screw (plain)	PWZ105	AG30	2	2						
31	Washer for screw (spring)	LWZ205	AG31	2	2	24					
32	Nut for screw	FNZ105	AG32	2	2						
33	Hose—housing to water outlet pipe	AEH480	AG33	1	1						
34	Clip for hose	8G632	AG34	2	2						
35	Plug—thermostat housing	ADP610	AG35	1	1] Correction. Was 2H3705 Not required when heater is fitted
36	Washer for plug	2K7498	AG36	1	1						
37	Pipe—by-pass—thermostat housing	AEH483	AG37	1	1						
38	Pipe—by-pass—housing to water pump	AEH491	AG38	1	1						
39	Hose for pipe—thermostat end	AEH493	AG39	1	1						
40	Hose for pipe—water pump end	AEH494	AG40	1	1						
41	Clip for hose—thermostat end	8G518	AG41	2	2] Correction. Was 2H3920
42	Clip for hose—water pump end	2H3420	AG42	2	2						
43	Clip for by-pass pipe	PCR1009	AG43	1	1						
44	Bracket for clip	AEH492	AG44	1	1						
45	Screw—clip to bracket	HZS0404	AG45	1	1						
46	Washer for screw (spring)	LWZ204	AG46	1	1	12					
47	Nut for screw	FNZ104	AG47	1	1						

SERVICE PARTS LIST

THE M.G. Series MGA TWIN CAM

Item No.	DESCRIPTION	Commencing (E) 101		Qty. per Vehicle		Unit of Issue	Type of Vehicle	MODIFICATIONS			REMARKS
		Part Number	Illus. No.	RHD	LHD			New Part Number	Change Point	Amdt. No.	
DISTRIBUTOR AND DYNAMO MOUNTINGS											
1	Housing—distributor	AEH496	AH1	1	1						
2	Bush for housing	AEH531	AH2	2	2						
3	Joint for housing	AEH502	AH3	1	1						
4	Shaft and dog assembly—distributor drive	AEH45	AH4	1	1						
5	Pin for dog (taper)	TPS0508	AH5	1	1						
6	Gear—distributor drive	AEH500	AH6	1	1						
7	Pin for gear (taper)	TPS0507	AH7	1	1						
8	Housing—tachometer drive	AEH455	AH8	1	1						
9	Joint for housing	1G2401	AH9	1	1						
10	Screw—distributor locating	ZCS0404	AH10	1	1						
11	Washer for screw	2K6337	AH11	1	1						
12	Pinion—tachometer drive	AEH458	AH12	1	1						
13	Oil seal for pinion	1G2398	AH13	1	1						
14	Ring—seal retaining	1G2399	AH14	1	1						
15	Bolt—dynamo to water pump and inlet manifold	HBZ0514	AH15	2	2						
16	Shim—dynamo to inlet manifold (.003")	AEH622	AH16	A/R	A/R						
17	Washer—distance—dynamo to inlet manifold	AEH530	AH17	A/R	A/R						Alternative to avoid using excessive quantity of shim AEH622
18	Washer for bolt (plain)	PWZ105	AH18	4	4						
19	Nut for bolt	LNZ205	AH19	2	2						
20	Link—dynamo adjusting	AEH503	AH20	1	1			AEH614	Com. (E) 448		Always supply AEH614 prior to (E) 448
21	Screw—link to water inlet pipe	ZCS0507	AH21	1	1						
22	Washer for screw (plain)	PWZ105	AH22	1	1						
23	Washer for screw (spring)	LWZ205	AH23	1	1	24					
24	Screw—link to dynamo	3H2098		1	1						
25	Washer for screw (spring)	2K5819		1	1						
26	Set screw—link to dynamo		AH24	1	1			ZCS0509			
27	Washer for set screw		AH25	1	1			2A110			
28	Washer for set screw		AH26	1	1			PWZ205			
29	Nut for set screw		AH27	1	1			51K1712			
30	Pulley for dynamo	AEH504	AH28	1	1			AEH605	Com. (E) 272		Always supply AEH605 with 1 off fan belt AEH621 prior to (E) 272
31	Fan for dynamo	1G1783	AH29	1	1						





AO296A

SERVICE PARTS LIST

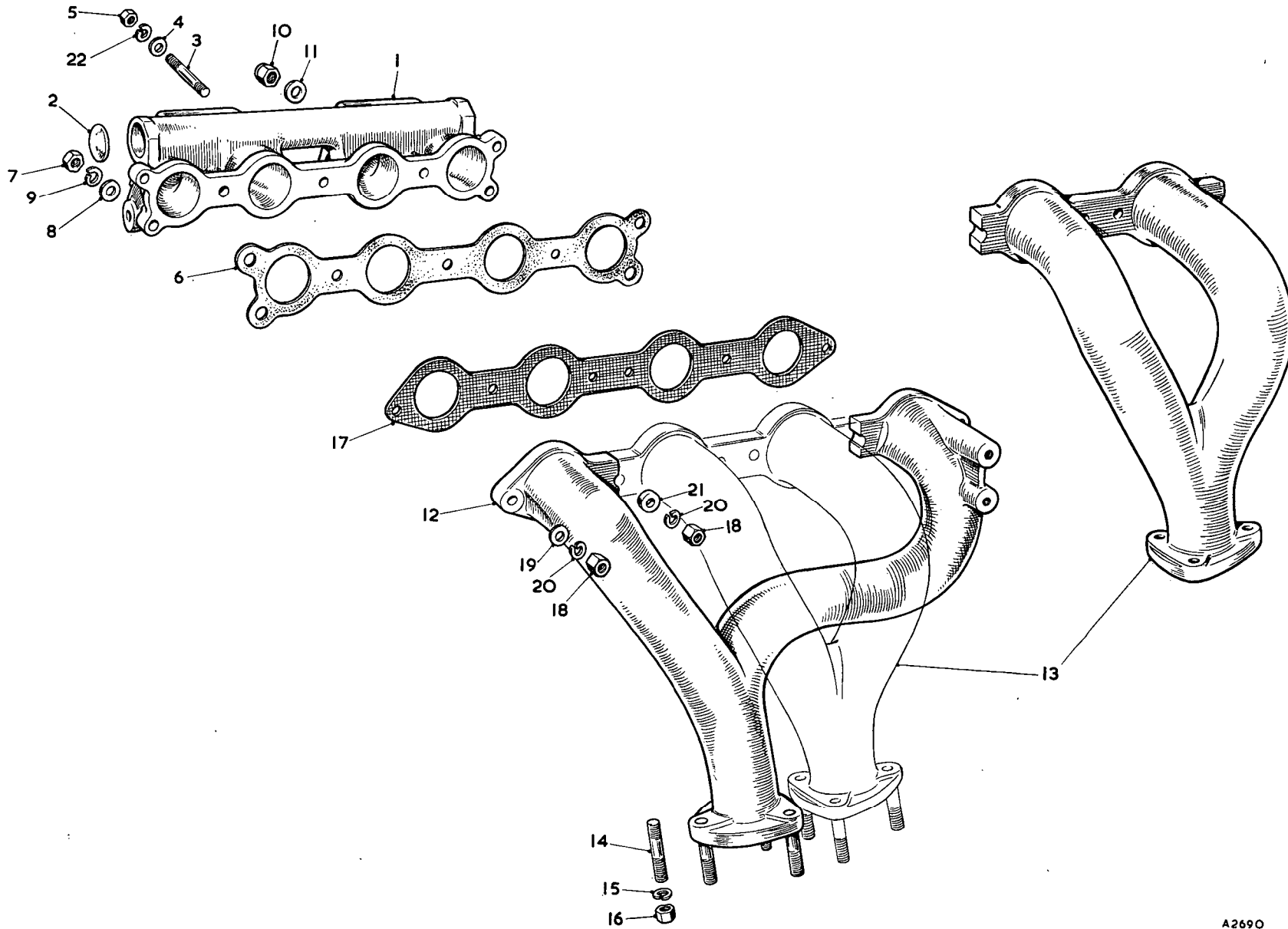
THE M.G. Series MGA TWIN CAM

Item No.	DESCRIPTION	Commencing (E) 101		Qty. per Vehicle		Unit of Issue	Type of Vehicle	MODIFICATIONS			REMARKS
		Part Number	Illus. No.	RHD	LHD			New Part Number	Change Point	Amdt. No.	
FAN BLADE—BELT											
1	Blade assembly—fan	AEG129	AF32	1	1						
2	Screw—blade to pulley	HZS0405	AF33	4	4						
3	Washer for screw (spring)	LWZ204	AF34	4	4	12					
4	Belt for fan	AEH473	AF35	1	1			<i>AEH621</i>	<i>ENG 272</i>	<i>675</i>	Always supply AEH621 with 1 off pulley AEH61 prior to (E) 272
OVERSIZE AND UNDERSIZE SERVICE COMPONENTS											
5	Piston assembly—010" O/S	AEH055410		4	4			AEH061610	Com. (E) 446		For all replacements AEH067310 must be us
6	Piston assembly—020" O/S	AEH055420		4	4			AEH064010	Com. (E) 606		
7	Piston assembly—030" O/S	AEH055430		4	4			AEH067310	Com. (E) 2057		For all replacements AEH067320 must be us
8	Piston assembly—040" O/S	AEH055440		4	4			AEH061620	Com. (E) 446		
9	Ring—compression (chrome)—010" O/S	AEH055610		4	4			AEH064020	Com. (E) 606		For all replacements AEH067330 must be us
10	Ring—compression (chrome)—020" O/S	AEH055620		4	4			AEH067320	Com. (E) 2057		
11	Ring—compression (chrome)—030" O/S	AEH055630		4	4			AEH061630	Com. (E) 446		For all replacements AEH067330 must be us
12	Ring—compression (chrome)—040" O/S	AEH055640		4	4			AEH064030	Com. (E) 606		
13	Ring—compression (taper)—010" O/S	AEH055710		8	8			AEH067330	Com. (E) 2057		For all replacements AEH067340 must be us
14	Ring—compression (taper)—020" O/S	AEH055720		8	8			AEH061640	Com. (E) 446		
15	Ring—compression (taper)—030" O/S	AEH055730		8	8			AEH064040	Com. (E) 606		For all replacements AEH067340 must be us
16	Ring—compression (taper)—040" O/S	AEH055740		8	8			AEH067340	Com. (E) 2057		
17	Ring—scraper—010" O/S	AEH055810		4	4			AEH064910			Com. (E) 606
18	Ring—scraper—020" O/S	AEH055820		4	4			AEH064920			
19	Ring—scraper—030" O/S	AEH055830		4	4			AEH064930			For all replacements AEH067210 must be us
20	Ring—scraper—040" O/S	AEH055840		4	4			AEH061520	Com. (E) 446		
21	Pin—gudgeon—002" O/S	AEH044102		4	4			AEH067220	Com. (E) 2057		For all replacements AEH067230 must be us
22	Pin—gudgeon—004" O/S	AEH044104		4	4			AEH061530	Com. (E) 446		
23	Pin—gudgeon—006" O/S	AEH044106		4	4			AEH067230	Com. (E) 2057		For all replacements AEH067240 must be us
24	Guide—inlet valve—010" O/S O/D	AEH038610		4	4			AEH061540	Com. (E) 446		
25	Guide—exhaust valve—010" O/S O/D	AEH038710		4	4			AEH067240	Com. (E) 2057		
26	Tappet—010" O/S	AEH065110		8	8						
OIL LEVEL INDICATOR											
27	Indicator—oil level	AEH568		1	1						
28	Washer for indicator (rubber)	AEC671		1	1						
CYLINDER LINER											
29	Liner for cylinder block	AEH656		4	4						For Service purposes on

SERVICE PARTS LIST

THE M.G. Series MGA TWIN CAM

Item No.	DESCRIPTION	Commencing (E) 101		Qty. per Vehicle		Unit of Issue	Type of Vehicle	MODIFICATIONS			REMARKS
		Part Number	Illus. No.	RHD	LHD			New Part Number	Change Point	Amdt. No.	
	ENGINE SERVICE KITS										
1	Joint washer kit for engine decarbonizing	8G2262		1	1						
2	Joint for cylinder head			1	1						
3	Joint for water inlet elbow			1	1						
4	Joint for cylinder head top cover (inlet)			1	1						
5	Joint for cylinder head top cover (exhaust)			1	1						
6	Joint for exhaust manifold			1	1						
7	Joint for inlet manifold			1	1						
8	Joint for carburetter			2	2						
9	Joint washer kit—supplementary	8G2263		1	1						
10	Joint for timing cover			1	1] Use together with 8G2262 for engine complete overhaul
11	Joint for cylinder side cover			2	2						
12	Joint for oil sump			1	1						
13	Joint for cylinder blanking plate			1	1						
14	Washer for drain tap			1	1						
15	Joint for thermostat housing cover			1	1						
16	Joint for tachometer housing			1	1						
17	Joint for oil strainer			1	1						
18	Joint for oil pump			1	1						
19	Joint—scroll to water pump body			1	1						
20	Joint for water inlet pipe			1	1						
21	Joint for water pump			1	1						
22	Joint for header tank filler neck			1	1						
23	Joint for distributor drive housing			1	1						
24	Joint for main bearing caps			2	2						
25	Joint for engine rear plate			1	1						
26	Joint for engine front plate			1	1						
27	Joint for oil filter			1	1						
28	Joint for oil feed pillar			1	1						
29	Water pump repair kit	M.I.H.O.R. 8G2264		1	1					468	
30	Joint—scroll to body										
31	Washer for scroll plug (fibre)										
32	Seal			1	1						
33	Washer (felt)			1	1						
34	Circlip for bearing			1	1						
35	Washer for spindle (felt)			1	1						
36	Joint—pump to timing case			1	1						
37	Circlip for spindle			1	1						
38	Joint—inlet pipe to water pump			1	1						
	WATER PUMP REPAIR KIT MOTOR	8G2304								468	



A2690

SERVICE PARTS LIST

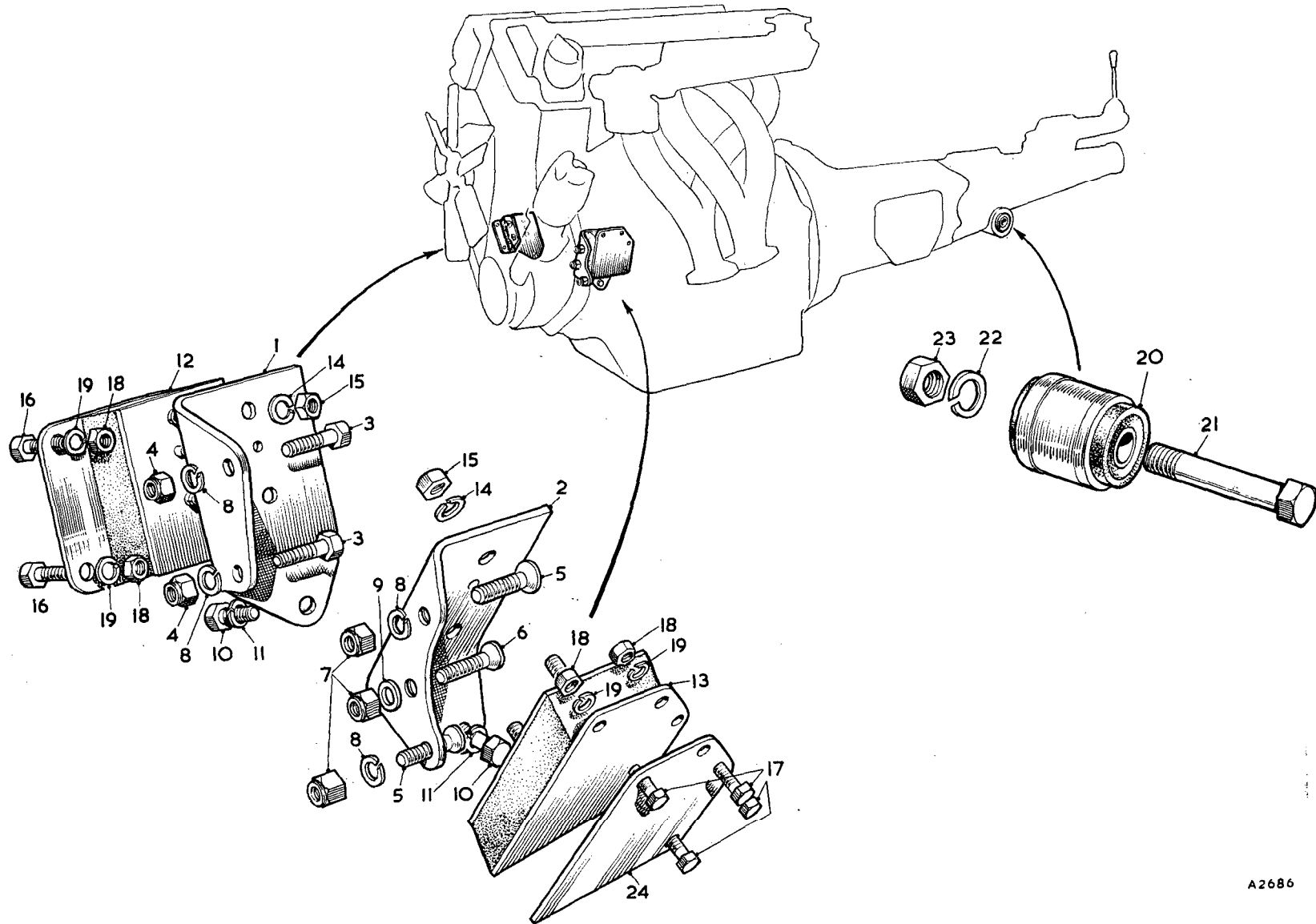
THE M.G. Series MGA TWIN CAM

Item No.	DESCRIPTION	Commencing (E) 101		Qty. per Vehicle		Unit of Issue	Type of Vehicle	MODIFICATIONS			REMARKS
		Part Number	Illus. No.	RHD	LHD			New Part Number	Change Point	Amdt. No.	
	INLET AND EXHAUST MANIFOLDS										
1	Manifold—inlet	AEH21	AJ1	1	1						
2	Plug for core hole	2K8168	AJ2	2	2						
3	Stud for carburetter	CLS2512	AJ3	8	8						
4	Washer for stud (plain)	PWZ105	AJ4	8	8						
5	Washer for stud (spring)	LWZ205	AJ22	8	8	24					
6	Nut for stud	FNZ105	AJ5	8	8						
7	Joint for inlet manifold	AEH578	AJ6	1	1						
8	Nut for manifold stud	FNZ106	AJ7	5	5						
9	Washer for manifold stud (plain)	PWZ106	AJ8	5	5						
10	Washer for manifold stud (spring)	LWZ206	AJ9	5	5						
11	Nut for manifold stud (self-locking)	LNZ206	AJ10	2	2						
12	Washer for manifold stud (plain)	PWZ106	AJ11	2	2						
13	Manifold—exhaust (No. 1 and No. 4 cylinders)	AEH30	AJ12	1	1						
14	Manifold—exhaust (No. 2 and No. 3 cylinders)	AEH31	AJ13	1	1						
15	Stud for outlet flange	AEH194	AJ14	6	6						
16	Washer for stud (spring)	LWZ206	AJ15	6	6						
17	Nut for stud	AEH195	AJ16	6	6						
18	Joint for exhaust manifold	AEH574	AJ17	1	1						
19	Nut for manifold stud	BNN105	AJ18	6	6			AHH5171	Com. (E) 256		Always use AHH5171 prior to (E) 256. Quantity reduced at (E) 113
20	Washer for manifold stud (plain)	PWN105	AJ19	6/4	6/4	12					
21	Washer for manifold stud (spring)		AJ20	6	6	24		LWZ205	Com. (E) 256] Use from (E) 101
22	Washer for manifold stud (between manifolds)		AJ21	2	2			AEH603	Com. (E) 113		

SERVICE PARTS LIST

THE M.G. Series MGA TWIN CAM

Item No.	DESCRIPTION	Commencing (C) 501		Qty. per Vehicle		Unit of Issue	Type of Vehicle	MODIFICATIONS			REMARKS
		Part Number	Illus. No.	RHD	LHD			New Part Number	Change Point	Amdt. No.	
	ENGINE MOUNTING										
1	Bracket—front engine mounting—R.H.	AHH5065	AK1	1	1						
2	Bracket—front engine mounting—L.H.	AHH5703	AK2	1	1						
3	Screw—bracket to mounting plate—R.H.	HZS0508	AK3	2	2						
4	Nut for screw	LNZ105	AK4	2	2						
5	Screw—bracket to mounting plate—L.H.	CMZ0516	AK5	2	2						
6	Screw—bracket to mounting plate—L.H.	CMZ0520	AK6	1	1						
7	Nut for screw	LNZ105	AK7	3	3						
8	Washer for screw (spring)	LWZ205	AK8	4	4	24					
9	Washer for L.H. screw (plain)	PWZ105	AK9	1	1						
10	Screw—bracket to block	HZS0606	AK10	2	2						
11	Washer for screw (spring)	LWZ206	AK11	2	2						
12	Rubber—front engine mounting—R.H.	AHH5833	AK12	1	1						
13	Rubber—front engine mounting—L.H.	AHH5832	AK13	1	1						
14	Washer—engine mounting to bracket (spring)	LWZ205	AK14	4	4	24					
15	Nut—engine mounting to bracket	FNZ105	AK15	4	4						
16	Screw—mounting rubber to bracket—R.H.	HZS0505	AK16	4	4						
17	Screw—mounting rubber to bracket—L.H.	HZS0506	AK17	4	4						
18	Nut for screw	FNZ105	AK18	8	8						
19	Washer for screw (spring)	LWZ205	AK19	8	8	24					
20	Flexible bush—rear engine mounting	AHH5031	AK20	1	1						
21	Bolt for flexible bush	HBZ0826	AK21	1	1						
22	Washer for bolt	LWZ208	AK22	1	1						
23	Nut for bolt	LNZ108	AK23	1	1						
24	Plate—packing—L.H.	AHH5896	AK24	1	1						



A2686