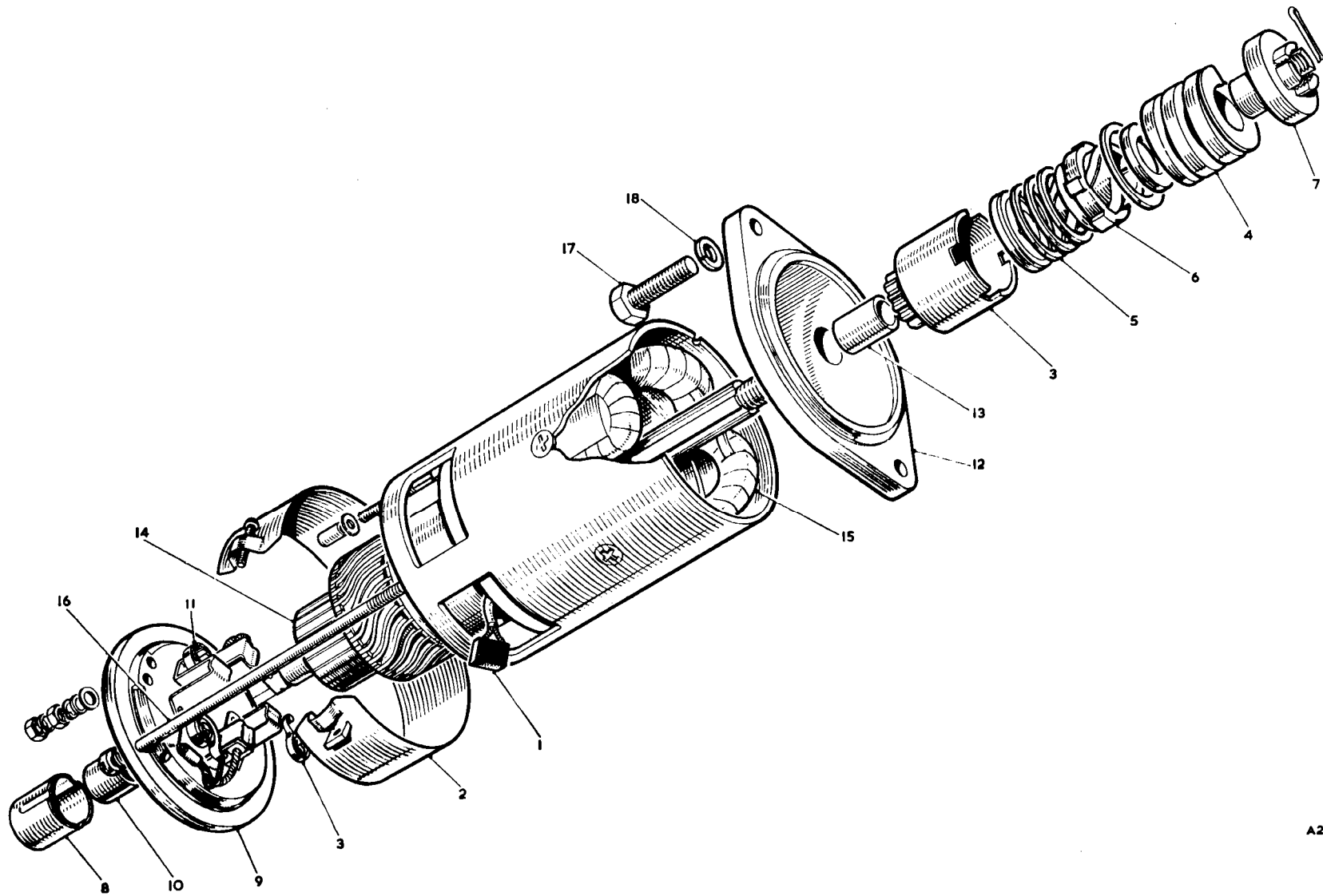


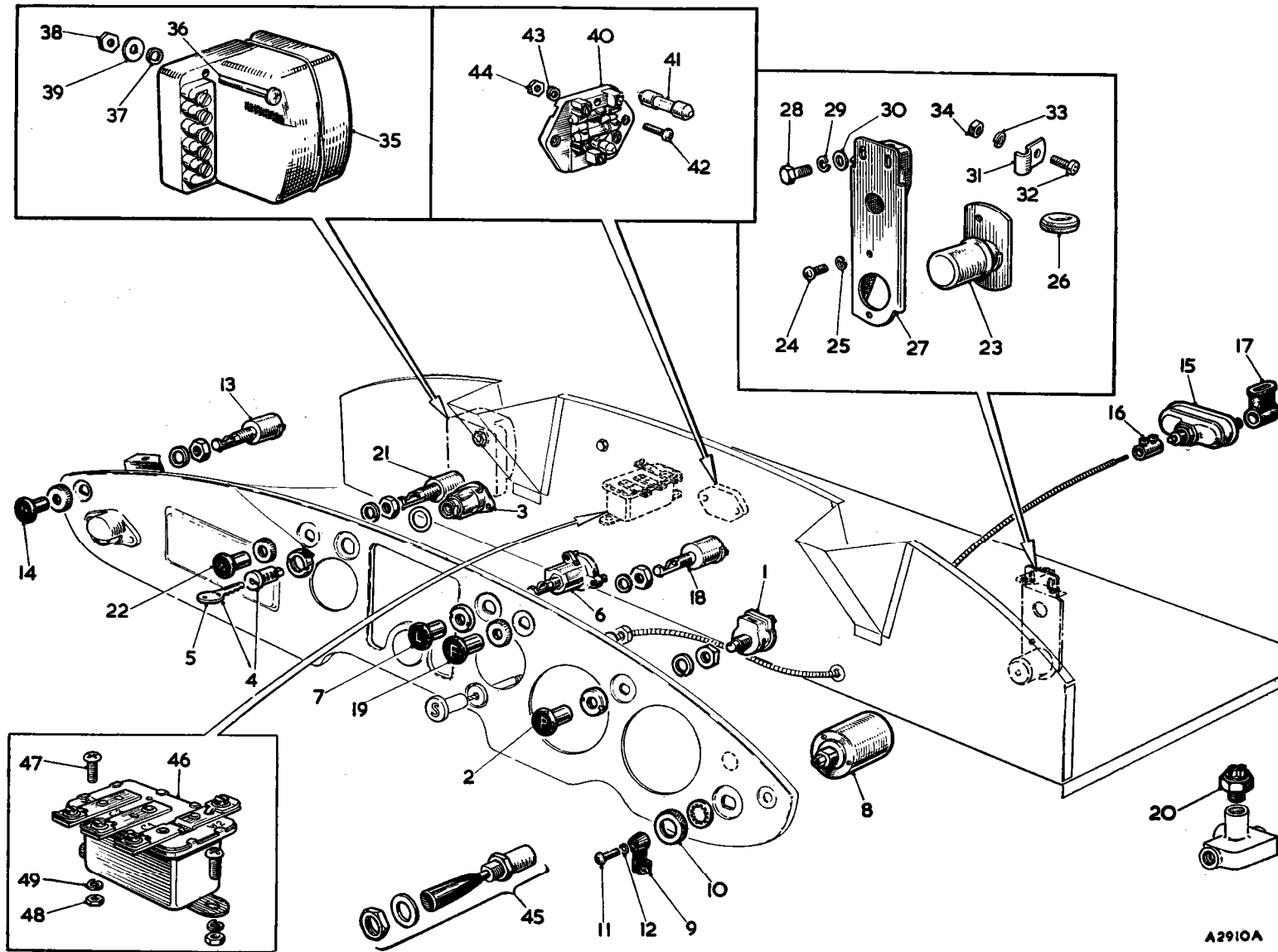
B1438

Item No.	DESCRIPTION	Commencing (C) 68851		Quantity	MODIFICATIONS		REMARKS
		Part Number	Illus. No.		New Part Number	Change Point	
	BATTERY						
1	Battery	N.S.P.		2			
2	Screw—terminal	2K8645	2	2			
3	Clamp—battery	AHH5166	3	2			
4	Packing—battery clamp	AHH5169	4	2			
5	Bolt—battery fixing (long)	AHH5167	5	2			
6	Bolt—battery fixing (short)	AHH5168	6	2			
7	Locknut—battery fixing bolt	FNZ204	7	3			
8	Pad—battery (rubber)	AHH5170	8	4			
9	Cover—battery	BHA4140	9	2			
10	Cap nut—cover	BHA4147	10	4			
11	Bolt—battery (long)	AHH5904	11	2			Optional extra
12	Bolt—battery (short)	AHH5903	12	2			
13	Nut—bolt	AJD8104Z	13	4			
14	Washer—plain—nut	PWZ104		4			
15	Dynamo	11G220		1		Fin. (E) 16GA/H6271	
16	Brush	7115028	14	1 set	1311219 1311425	Com. (E) 16GA/H6272	Not available; use 1311219 or 1311425, together with 1 off 47H5496 connector 17.5 amp, 1 off 51L286 insulator, 1 off 47H5410 connector 35 amp., 1 off 51.280 insulator Not available] Alternatives use 1311219
17	Bracket assembly—commutator end	7115387	15	1	47H5388 47H5395		
18	Bush—bracket	7H5390	16	1			
19	Oiler	17H5530	17	1	47H5394	Com. (E) 16GA/H6272	
20	Spring—brush tension	7H5031	18	1 set	47H5389		
21	Bearing—drive end	97H626	19	1			
22	Bracket assembly—drive end	7H5388	20	1	47H5393	Com. (E) 16GA/H6272	
23	Key—pulley	WKN404	21	1			
24	Nut—shaft	7115034	22	1	FNN207	Com. (E) 16GA/H6272	7115034 not available; use FNN207 Part No. change; was 47H5215
25	Washer—spring nut	LWZ207	23	1			
26	Armature assembly	7115389	24	1	47H5391	Com. (E) 16GA/H6272	Not available; use 27H3574
27	Armature assembly	27H3574	24	1			
28	Coils field	7115071	25	a set	47H5390		
29	Terminal assembly	17H5433	26	1	57H5084		
30	Bolt—through fixing	17H5217	27	2			
31	Sundry parts	7115376		1 set	57H5085	Com. (E) 16GA/H6272	7115376 not available; use 57H5085

Item No.	DESCRIPTION	Commencing (C) 68851		Quantity	MODIFICATIONS		REMARKS
		Part Number	Illus. No.		New Part Number	Change Point	
	STARTER						
1	Starter	3H952		1	13H559	Com. (E) 16GC/H6435	3H952 not available; use 13H559
2	Brush	7H5040	1	1 set			
3	Band—cover	7H5038	2	1			
4	Pinion and barrel	7H5046	3	1	67H5010	Com. (E) 16GC/H6435	
5	Circlip—pinion and sleeve retaining	47H5100		1		Fin. (E) 10GC/H6434	
6	Spring—pinion main	7H5045	4	1			
7	Spring—pinion return	7H5047	5	1		Fin. (E) 16GC/H6434	
8	Sleeve—screwed (with control nut)	7H5529	6	1	67H5013	Com. (E) 16GC/H6435	
9	Nut—shaft	47H5342	7	1			
10	Cap—shaft	7H5039	9	1		Fin. (E) 16GC/H6434	
11	Cup—shaft			1	67H5008		
12	Circlip—cup retaining			1	7H6887		
13	Bracket—commutator end	7H5041	9	1	47H5339	Com. (E) 16GC/H6435	
14	Bush—commutator end	7H5042	10	1	47H5340		
15	Spring—brush tension (for bracket with split support post)	7H5043	11	1 set			Use 27H6768 for this application
16	Spring—brush tension	47H5341		1 set			See service memorandum MG/347
17	Bracket—driving end	7H5048	12	1	67H5014		
18	Bush—driving end	7H5049	13	1	47H5346	Com. (E) 16GC/H6435	
19	Armature	7H5050	14	1	67H5012		
20	Coils—field	7H5051	15	1 set			
21	Bolt—end covers	17H5444	16	2			
22	Sundry parts	7H5156		1 set			
23	Screw fixing starter	53K149	17	2			
24	Washer—spring—screw	LWN206	18	2			



A2200



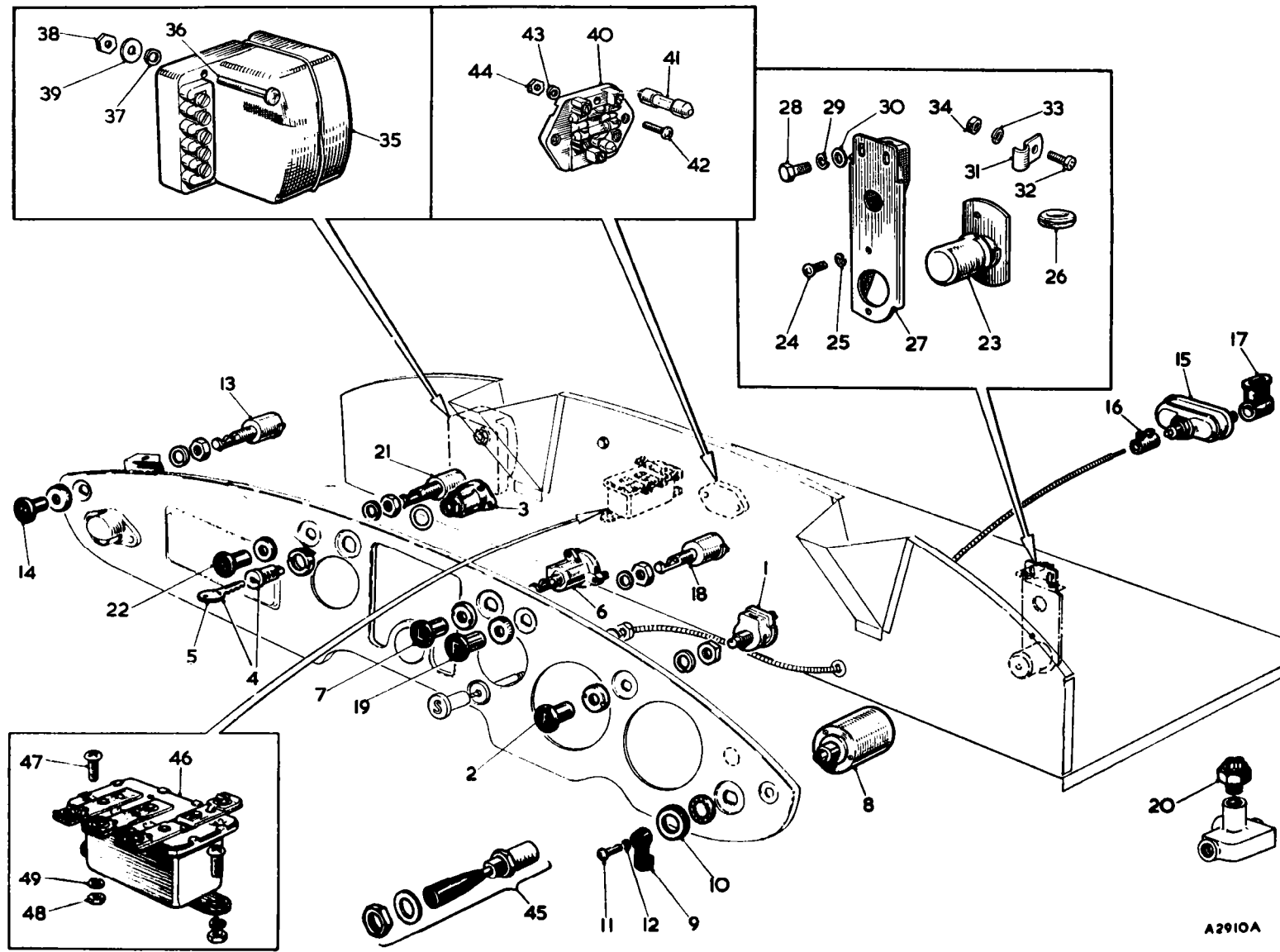
Item No.	DESCRIPTION	Commencing (C) 68851		Quantity	MODIFICATIONS		REMARKS
		Part Number	Illus. No.		New Part Number	Change Point	
	SWITCHES						
1	Switch—panel light	47H5188	1	1			Not available; use 57H5081
2	Switch—panel light	57H5081	1	1			Not available; use 57H5526
3	Switch—panel light	57H5526	1	1			
4	Knob—switch	AHH5368	2	1			
5	Switch—ignition	AHH5369	3	1	3H2825		AHH5360 not available; use 3H2825
6	Lock and key—ignition switch	2H4185	4	1	24G1345		Part No. change; was 7H9380 Not available; use 24G1345
7	Key	ANK4646	5	2			
8	Switch—head and sidelamp	3H3098	6	1			
9	Knob—switch	AHH5360	7	1			
10	Switch—flasher	AMK5007	8	1			
11	Lever—switch	27H5511	9	1	11K9308		27H5511 not available; use K9308
12	Nut—knurled—fixing flasher switch	17H5485	10	1			
13	Screw fixing lever	17H5383	11	1			
14	Washer—spring—screw	17H5484	12	1			
15	Switch—map reading lamp	27H5278	13	1			
16	Knob—switch	AHH5362	14	1			
17	Switch—starter	3H1949	15	1			
18	Coupling switch to control	3H1950	16	1			
19	Bootee terminal	BCA4324	17	2			
20	Solenoid switch—starter	BCA4501		1			
21	Screw—switch to R/H wheelarch	PMZ0308		2			} For use when steering lock is fitted
22	Washer—spring—screw	1WZ203		2			
23	Nut—screw	FNZ103		2			
24	Switch—for lamp	27H5278	18	1			
25	Knob—switch	AHH5366	19	1			
26	Switch—stop lamp	3H1894	20	1			
27	Switch—windscreen wiper	27H5278	21	1			
28	Knob—switch	AHH5364	22	1			
29	Switch—dipper	11G2007	23	1			
30	Screw—dipper switch to bracket	AJD1243Z	24	2			
31	Washer—spring—screw	LWZ203	25	2			
32	Grommet—dip switch cable through bulkhead	ACB8474	26	1			
33	Bracket—dipper switch	AHH5780	27	1			
34	Screw—bracket to crossmember—frame goal post	11ZS0405	28	1			} R.H.D.
35	Washer—spring—screw	1WZ204	29	3			
36	Washer—plain—screw	PWZ104	30	3			
37	Bracket—dipper switch	AHH5965		1			} L.H.D.
38	Screw—bracket to inner goal post upright—L/H	PMZ0310		3			
39	Washer—spring—screw	1WZ203		3			
40	Clip—dipper switch cable to bracket	CHR0507	31	1			} R.H.D.
41	Screw—clip	PMZ0307	32	1			
42	Washer—spring—screw	1WZ203	33	1			
43	Nut—screw	FNZ103	34	1			

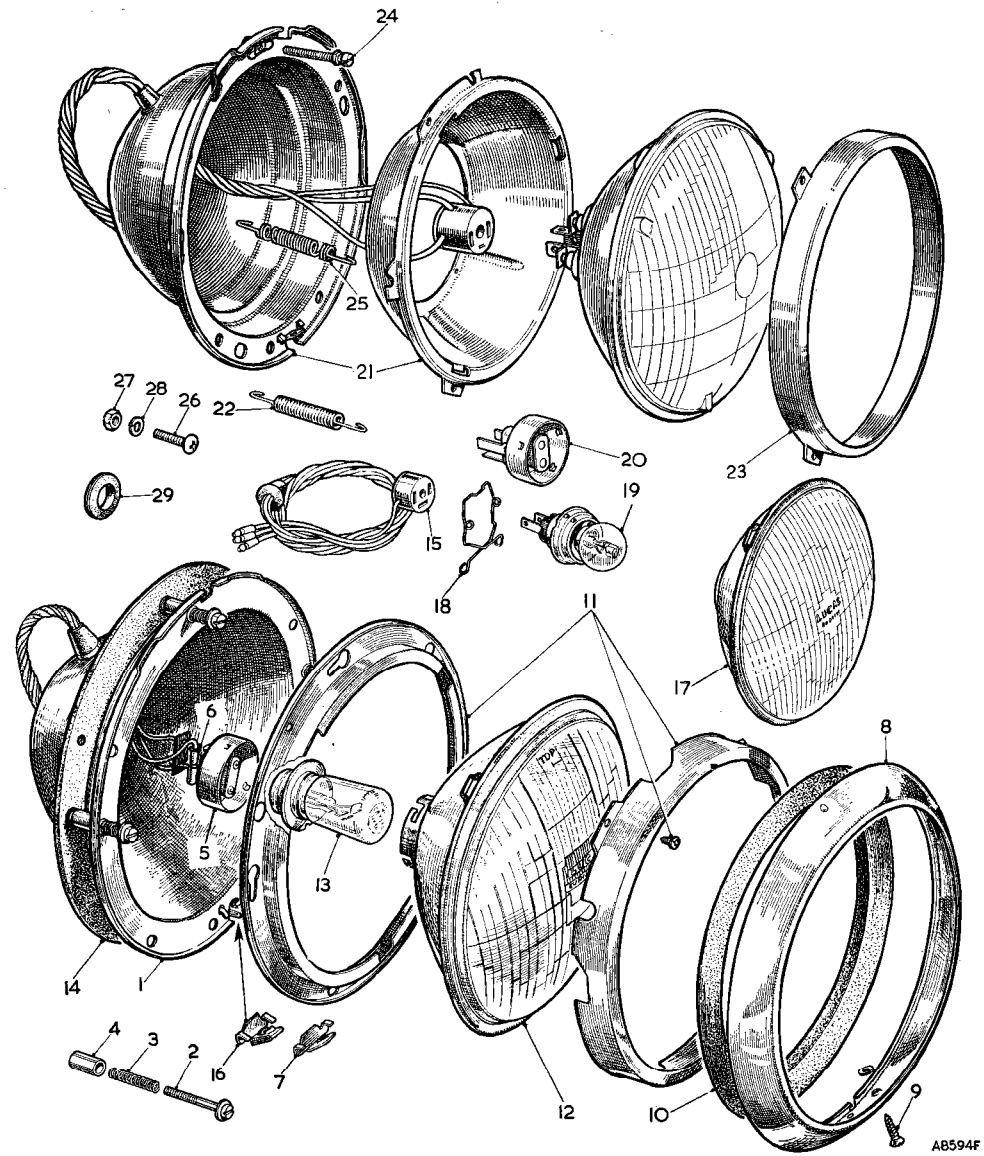
SERVICE PARTS LIST

THE MGA 1600

Item No.	DESCRIPTION	Commencing (C) 68851		Quantity	MODIFICATIONS		REMARKS
		Part Number	Illus. No.		New Part Number	Change Point	
	Switches—continued						
1	Box—control	3H1835	35	1	3H1836	Com. (E) 16GA/H6272	
2	Cover	7H5522		1			
3	Clip—cover	7H5128		1			
4	Resistance—63 ohms (carbon type)	7H5066		1			
5	Resistance—60 ohms (wire wound)	47H5589		1] See service memorandum M6/342
6	Screw—control box to dash	PMZ0320	36	2			
7	Washer—spring—screw	LWZ203	37	2			
8	Nut—screw	FNZ103	38	2			
9	Washer (special)	AJD7212	39	2			
10	Box—fuse	1G2613	40	1			
11	Fuse—35 amp.	7H5067	41	4			
12	Screw—fuse box to dash	PMZ0310	42	2			
13	Washer—spring—screw	LWZ203	43	2			
14	Nut—screw	FNZ103	44	2			
15	Switch—headlamp flasher	BHA4116	45	1			
16	Relay—headlamp flasher	3H1911	46	1			
17	Screw fixing relay	PMZ0308	47	2			
18	Nut—screw	FNZ103	48	2			
19	Washer—spring—nut	LWZ203	49	2			

N. America





SERVICE PARTS LIST

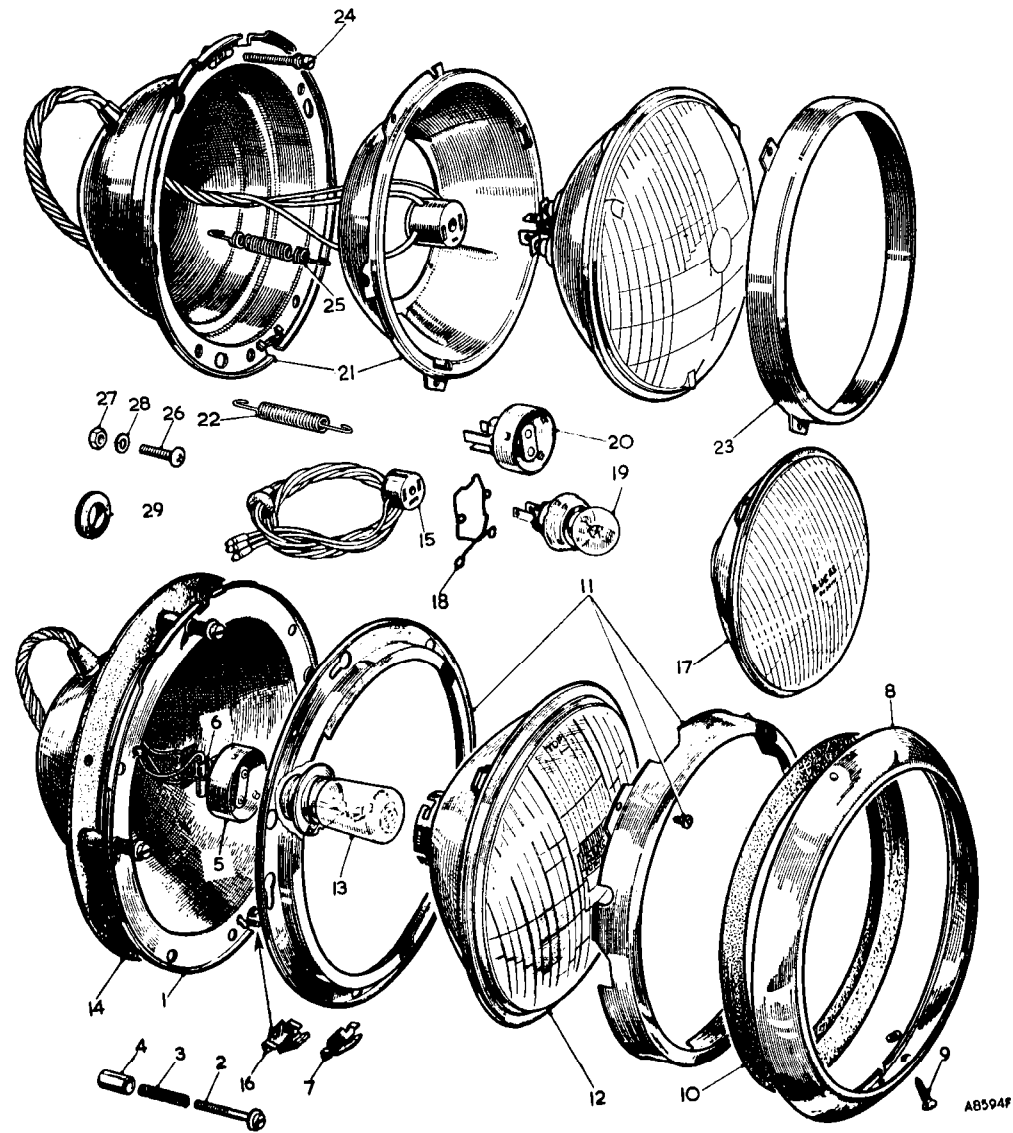
THE MGA 1600

Item No.	DESCRIPTION	Commencing (C) 68851		Quantity	MODIFICATIONS		REMARKS
		Part Number	Illus. No.		New Part Number	Change Point	
	LAMPS (ROAD)						
1	Headlamp U.K. R.H.D.	47H5365		2			No longer available; use component parts
2	Body assembly	7H6838	1	2			
3	Screw—beam adjustment	17H5394	2	6			
4	Spring—screw	17H5231	3	6			
5	Sleeve—sealing	27H5253	4	6			
6	Adaptor and cable assembly	17H5145	5	2			Not available; use 37H5588
7	Adaptor and cable assembly	37H5588	5	2	27H2333		37H5588 not available; use 27H2333
8	Adaptor	17H5306		2			
9	Sleeve—terminal	73H5271	6	6] Alternatives
10	Sleeve—terminal	7H5582	6	2			
11	Bracket—rim fixing	17H5232	7	2			
12	Rim assembly	17H5147	8	2			
13	Screw—rim fixing	AJA5081	9	2			
14	Excluder—dust	3H2962	10	2		Fin. (C) 105361	
15	Plate—light unit retaining	17H5205	11	2			
16	Light unit	7H5483	12	2			
17	Bulb—left dip	BFS414	13	2			Part No. change; was 13H140
18	Gasket—body	3H1031	14	2	7H8338	Com. (C) 105362	7H8338 correction; was 7H8358
19	Headlamp Sweden			2	BMK301		No longer available; use component parts
20	Body assembly		1	2	67H5028		
21	Screw—beam adjustment		2	6	17H5394		
22	Spring—screw		3	6	17H5231		
23	Sleeve—sealing		4	6	27H5253		
24	Adaptor and cable assembly		15	2	BHA4235		
25	Adaptor			2	47H5126		
26	Sleeve—terminal		6	6	37H5271] 37H5271 correction; was 37 5721 Alternatives
27	Sleeve—terminal		6	6	7H5582	Com. (C) 72040	
28	Bracket—rim fixing		7	2	37H5190		
29	Nut—rim fixing		16	2	27H5354		
30	Rim assembly		8	2	17H5147		
31	Screw—rim fixing		9	2	AJA5081		
32	Excluder—dust		10	2	3H2962		
33	Plate—light unit retaining		11	2	17H5205		
34	Light unit		17	2	47H5528		
35	Spring—bulb retaining		18	2	47H5125		
36	Bulb—vertical dip		19	2	BFS410		Part No. change; was 13H138
37	Gasket—body		14	2	3H1031		

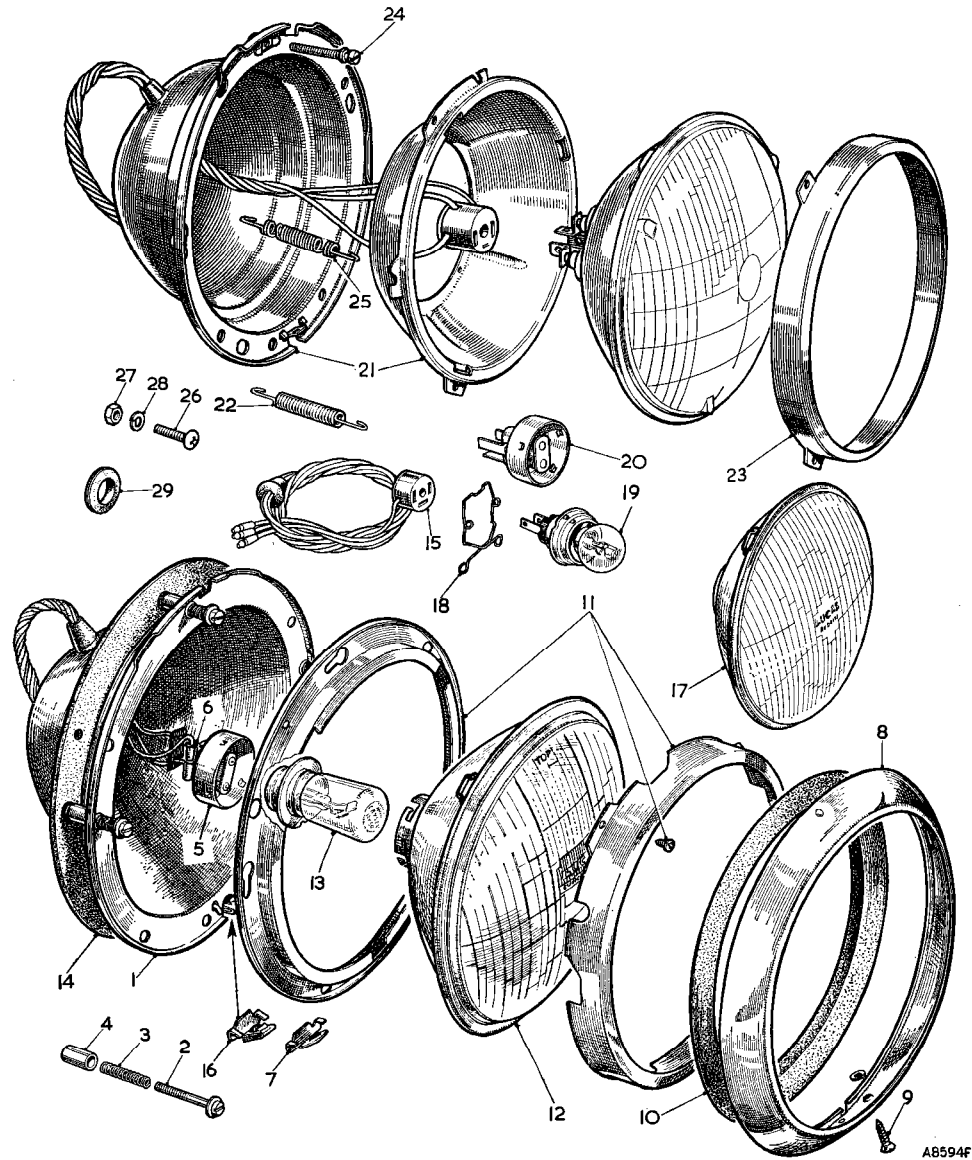
SERVICE PARTS LIST

THE MGA 1600

Item No.	DESCRIPTION	Commencing (C) 68851		Quantity	MODIFICATIONS		REMARKS
		Part Number	Illus. No.		New Part Number	Change Point	
	Lamps (Road)—continued						
1	Headlamp L.H.D. Europe except France		N.S.P.	2			No longer available; use component parts
2	Body assembly	67H5028	1	2			
3	Screw—beam adjustment	17H5394	2	6			
4	Spring—screw	17H5231	3	6			
5	Sleeve—sealing	27H5253	4	6			
6	Adaptor and cable assembly	BHA4235	15	2			
7	Adaptor	47H5126		2			
8	Sleeve—terminal	37H5271	6	6] Alternatives
9	Sleeve—terminal	7H5582	6	6			
10	Bracket—rim fixing	37H5190	7	2			
11	Nut—rim fixing	27H5354	16	2			
12	Rim assembly	17H5147	8	2			
13	Screw—rim fixing	AJA5081	9	2			
14	Excluder—dust	3H2962	10	2			
15	Plate—light unit retaining	17H5205	11	2			
16	Light unit	47H5124	17	2			
17	Spring—bulb retaining	47H5125	18	2			
18	Bulb—vertical dip	BFS410	19	2			Part No. change; was 13H188
19	Gasket—body	3H1031	14	2			
20	Headlamp France	BCA4303		2			No longer available; use component parts
21	Body assembly	67H5028	1	2			
22	Screw—beam adjustment	17H5394	2	6			
23	Spring—screw	17H5231	3	6			
24	Sleeve—sealing	27H5253	4	6			
25	Adaptor and cable assembly	BHA4235	15	2			
26	Adaptor	47H5126		2			
27	Sleeve—terminal	37H5271	6	6] Alternatives
28	Sleeve—terminal	7H5582	6	6			
29	Bracket—rim fixing	37H5190	7	2			
30	Nut—rim fixing	27H5354	16	2			
31	Rim assembly	17H5147	8	2			
32	Screw—rim fixing	AJA5081	9	2			
33	Excluder—dust	3H2962	10	2			
34	Plate—light unit retaining	17H5205	11	2			
35	Light unit	47H5124	17	2			
36	Spring—bulb retaining	47H5125	18	2			
37	Bulb—vertical dip	BFS411	19	2			Part No. change; was 13H189
38	Gasket—body	3H1031	14	2			



AB594F

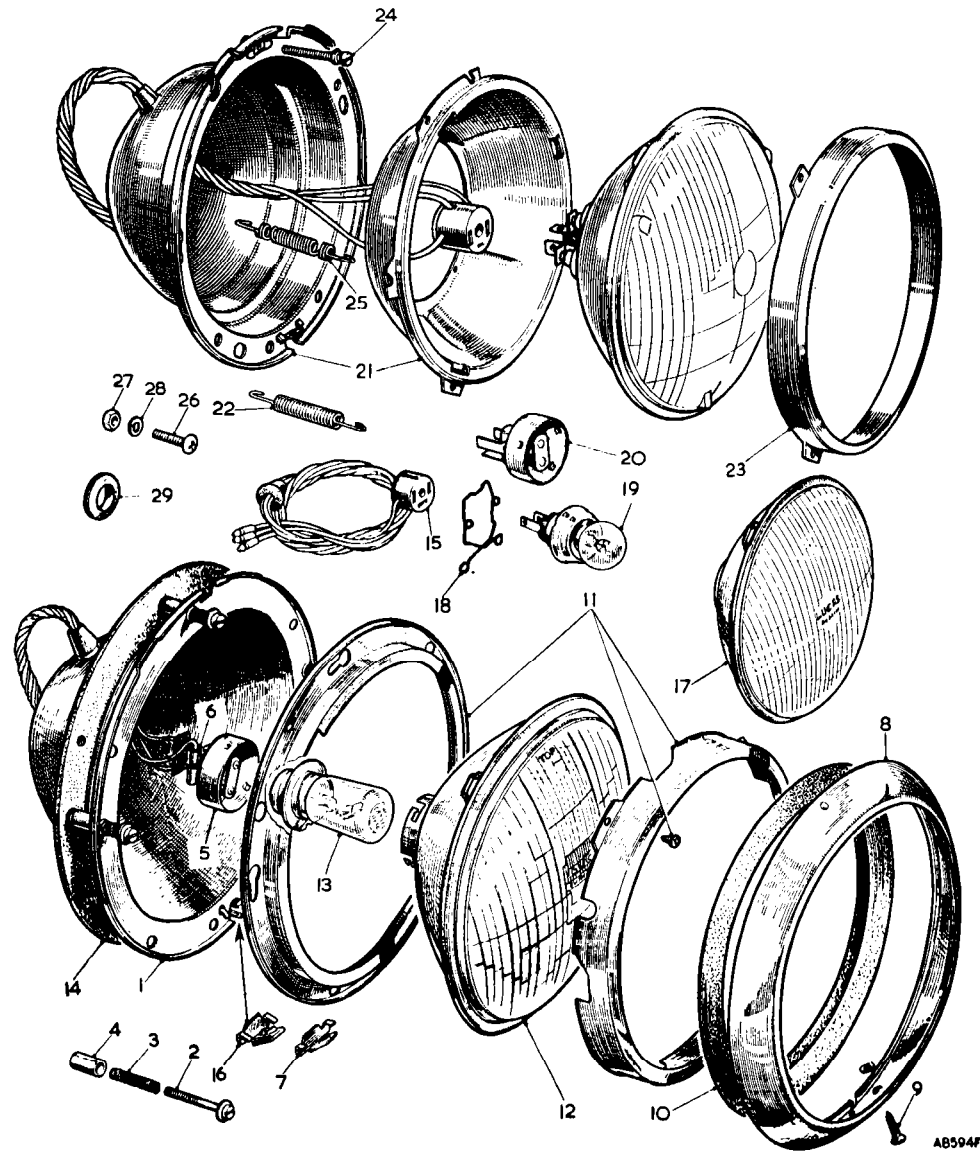


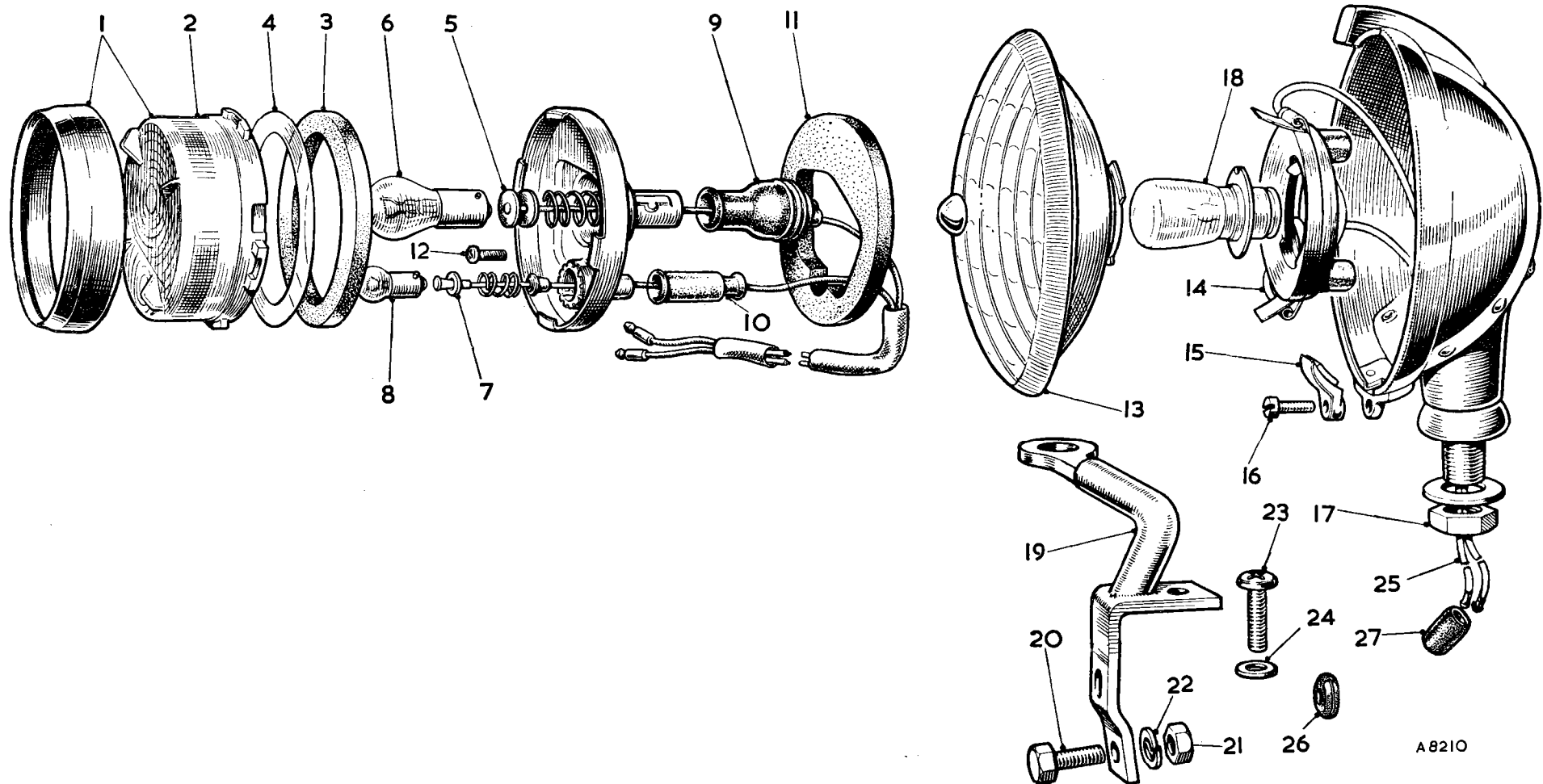
SERVICE PARTS LIST

THE MGA 1600

Item No.	DESCRIPTION	Commencing (C) 68851		Quantity	MODIFICATIONS		REMARKS
		Part Number	Illus. No.		New Part Number	Change Point	
	Lamps (Road) continued						
1	Headlamp L.H.D. except Europe	N.S.P.		2			No longer available; use component parts
2	Body assembly	67H5028	1	2			
3	Screw—beam adjustment	17H5394	2	6			
4	Spring—screw	17H5231	3	6			
5	Sleeve—sealing	27H5253	4	6			
6	Adaptor and cable assembly	BHA4235	15	2			
7	Adaptor	47H5126		2			
8	Sleeve—terminal	37H5271	6	6			
9	Sleeve—terminal	7H5582	6	6		Fin. (C) 105361	Alternatives
10	Bracket—rim fixing	37H5190	7	2			
11	Nut—rim fixing	27H5354	16	2			
12	Rim assembly	17H5147	8	2			
13	Screw—rim fixing	AJA5081	9	2			
14	Excluder dust	3H2962	10	2			
15	Plate light unit retaining	17H5205	11	2			
16	Light unit	17H5375	12	2			
17	Adaptor conversion	17H5546	20	2			
18	Bulb right dip	BFS355	13	2			Part No. change; was 3111893
19	Gasket body	3111031	14	2			
20	Headlamp L.H.D. except Europe			2	N.S.P.		
21	Body assembly		1	2	7116838		
22	Screw—beam adjustment		2	6	17H5394		
23	Spring—screw		3	6	17H5231		
24	Sleeve—sealing		4	6	27H5253		
25	Adaptor and cable assembly		5	2	17H5145		27H5253 correction; was 17H5253
26	Adaptor and cable assembly		5	2	37H5588		Not available; use 37H5588
27	Adaptor and cable assembly			2	27H2333		Not available; use 27H2333
28	Adaptor			2	17H5306	Com. (C) 105362	
29	Sleeve—terminal		6	6	37H5231		
30	Sleeve—terminal		6	6	7H5582		Alternatives
31	Bracket—rim fixing		7	2	17H5232		
32	Rim assembly		8	2	17H5147		
33	Screw—rim fixing		9	2	AJA5081		
34	Plate—light unit retaining		11	2	17H5205		
35	Light unit		12	2	17H5375		
36	Bulb—right dip		13	2	BFS355		
37	Gasket—body		14	2	7118338		

Item No.	DESCRIPTION	Commencing (C) 68851		Quantity	MODIFICATIONS		REMARKS
		Part Number	Illus. No.		New Part Number	Change Point	
	Lamps (Road)—continued						
1	Headlamp U.S.A.			2	57H5010	Com. (C) 70222 Fin. (C) 102856	No longer available; use component parts
2	Body assembly		21	2	67H5029		
3	Screw—beam adjustment		2	4	17H5230		
4	Spring—screw		3	4	17H5231		
5	Spring—rim fixing		22	2	17H5277		
6	Plate—light unit retaining		23	2	17H5273		
7	Adaptor and cable assembly		15	2	BHA4235		
8	Adaptor			2	47H5126		
9	Sleeve—terminal		6	6	37H5271		
10	Sleeve—terminal		6	6	7H5582		
11	Bracket—rim fixing		7	2	37H5190		
12	Nut—rim fixing		16	2	27H5354		
13	Rim assembly		8	2	47H5564		
14	Screw—rim fixing		9	2	AJA5081		
15	Gasket—body		14	2	13H346		
16	Headlamp N. America			2	57H5382	No longer available; use component parts	
17	Body assembly		21	2	67H5024		
18	Screw—beam adjustment		24	4	67H5025		
19	Spring—unit seating rim		25	2	67H5026		
20	Plate—light unit retaining		23	2	57H5292		
21	Plate—light unit retaining		23	2	27H3338		
22	Adaptor and cable assembly		15	2	BHA4235		
23	Adaptor			2	47H5126		
24	Sleeve—terminal		6	6	37H5271		
25	Sleeve—terminal		6	6	7H5582		
26	Bracket—rim fixing		7	2	37H5190		
27	Nut—rim fixing		16	2	27H5354		
28	Rim assembly		8	2	17H5147		
29	Screw—rim fixing		9	2	AJA5081		
30	Gasket—body		14	2	57H5353		
31	Tubing—headlamp leads	N.S.P.		2		Was ACH5701	
32	Screw—headlamp to wing	PMZ0310	26	8			
33	Nut—screw	FNZ103	27	8			
34	Washer—spring—nut	LWZ203	28	8			
35	Grommet—cable through front panel and radiator support	RF110	29	3			





A8210

SERVICE PARTS LIST

THE MGA 1600

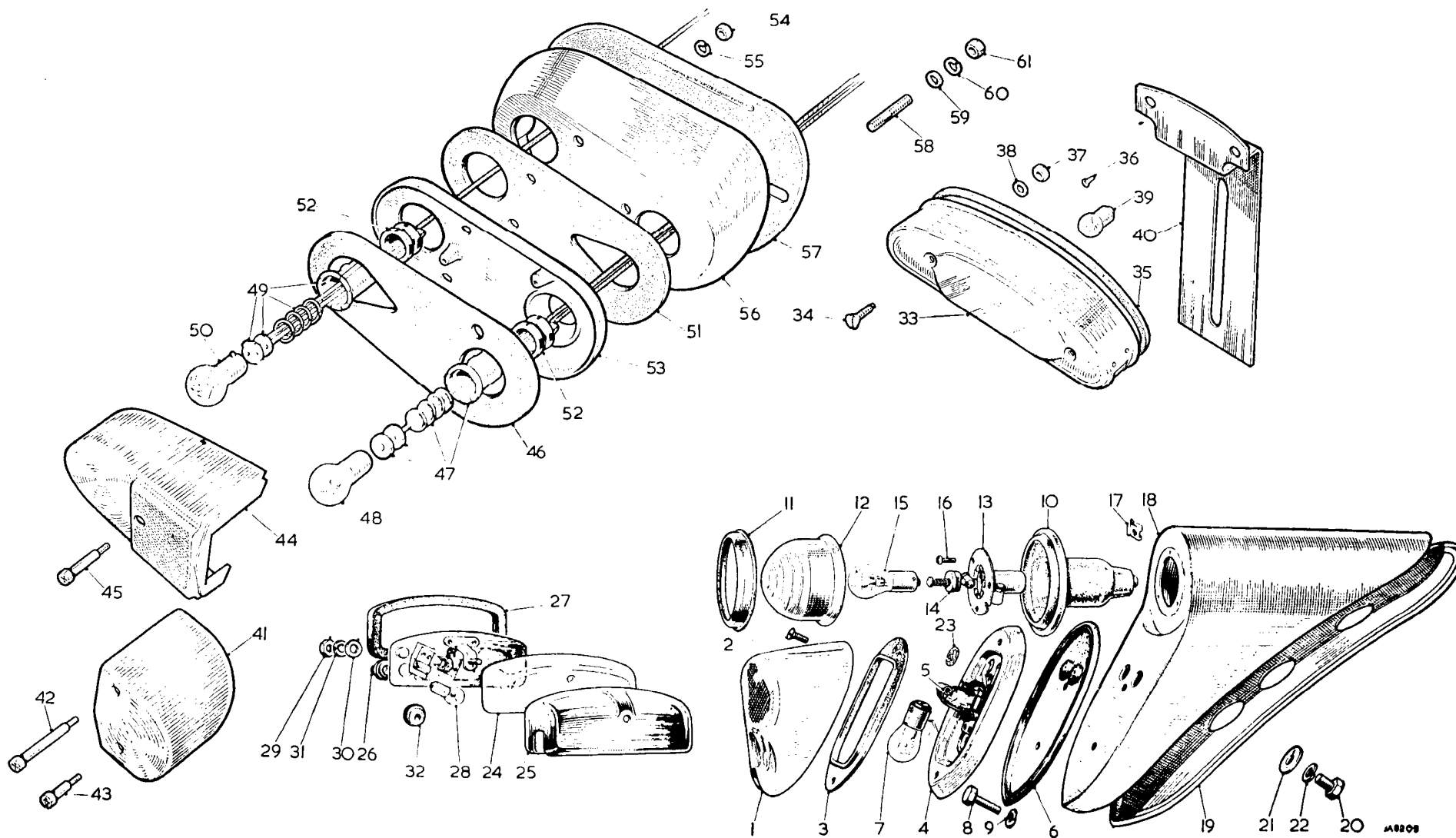
Item No.	DESCRIPTION	Commencing (C) 68851		Quantity	MODIFICATIONS		REMARKS
		Part Number	Illus. No.		New Part Number	Change Point	
	Lamps (Road) —continued						
1	Sidelamp assembly and flasher (Amber and White)	BCA4311		2	13H519		BCA4311 not available; use 13H519 BCA4342 not available; use 13H520
2	Sidelamp assembly and flasher (White) L.H.D.	BCA4342			13H520		
3	Lens and rim (Amber and White)	47H5507	1	2			
4	Lens and rim (White) L.H.D.	47H5508					
5	Lens (Amber and White)	47H5504	2	2			
6	Lens (White) L.H.D.	47H5506					
7	Gasket— lens seating	37H5460	3	2			
8	Ring—sliding	17H5307	4	2			
9	Interior—bulb holder (flasher)	37H5452	5	2			
10	Bulb—flasher	BFS382	6	2			Part No. change; was 1F9012
11	Interior—bulb holder (sidelamp)	7H5536	7	2			
12	Bulb—sidelamp	BFS989	8	2			Part No. change; was 2H4817
13	Grommet— cable entry (flasher)	37H5525	9	2			
14	Grommet— cable entry (sidelamp)	37H5294	10	2			
15	Gasket—lamp seating	47H5505	11	2			
16	Screw—sidelamp to wing	PMZ0306	12	1			
17	Lamp—fog	AD11785					
18	Light unit	ACG5179	13	2			
19	Adaptor assembly		14	2	57H5336		ACG5180 not available; use 57H5336
20	Catch rim	AJH5057	15	2			
21	Screw catch	17H5400	16	2			
22	Nut—lamp spigot	17H5401	17	2	27H6767		17H5401 not available; use 27H6767
23	Bulb	BFS323	18	2			Part No. change; was 1F9034
24	Bracket—fog lamp—R/H	AHH5521	19	1			
25	Bracket—fog lamp—L.H.	AHH5520		1			
26	Screw—bracket to bumper blade (lower)	HZS0506	20	2			
27	Nut—screw	FNZ105	21	2			
28	Washer—spring—nut	LWZ205	22	2			
29	Screw—bracket to bumper blade (top)	PMP0518	23	2			
30	Washer—plain—screw	PWP105	24	2			
31	Relay—fog lamp	BHA4075		1			
32	Screw—relay to bulkhead	PMZ0308		2			
33	Nut—screw	FNZ103		2			
34	Washer—spring—nut	LWZ203		2			
35	Harness—fog lamp relay	AHH5758		1			
36	Lead—fog lamp 45" (114 cm.)	AHH5454	25	2			No longer available
37	Lead—fog lamp 15" (38 cm.)	AH115541		2			
38	Grommet—lamp lead	RFR103	26	4			
39	Connector	2H2617	27	3			

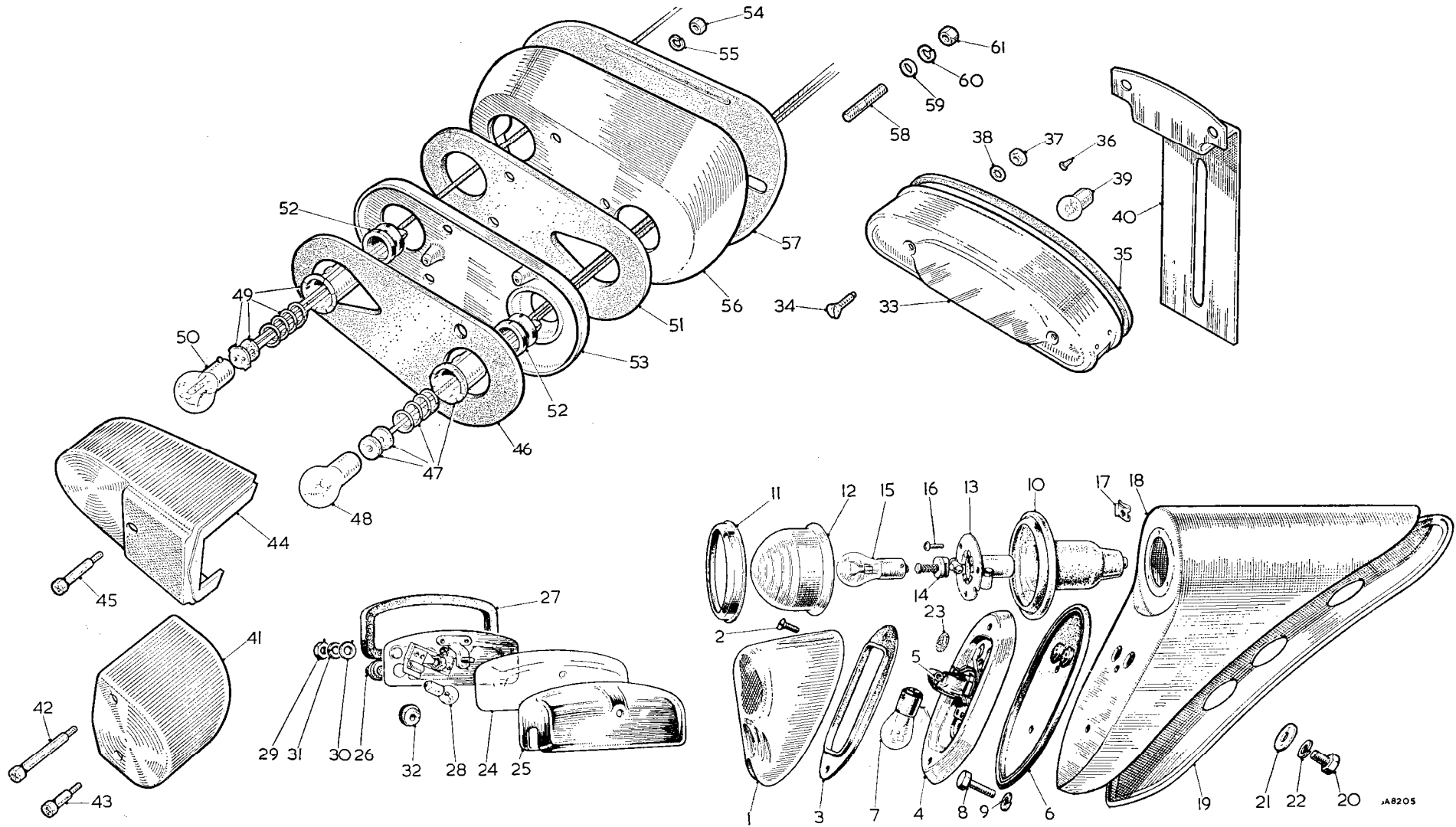
Optional
extra

SERVICE PARTS LIST

THE MGA 1600

Item No.	DESCRIPTION	Commencing (C) 68851		Quantity	MODIFICATIONS		REMARKS
		Part Number	Illus. No.		New Part Number	Change Point	
	Lamps (Road)—continued						
1	Lamp—stop/tail and reflex assembly	13H23		2			
2	Lens and reflex assembly	AJA5069	1	2			
3	Screw—lens fixing	37H5410	2	4			
4	Rubber—lens seating	AJA5071	3	2			
5	Rim and bulb holder assembly	AJA5072	4	2			
6	Sleeve—terminal	37H5271	5	6			
7	Rubber—lamp seating	AJA5073	6	2			
8	Bulb	BFS380	7	2			Part No. change; was 1F9026
9	Screw—lamp to plinth	PMZ0308	8	4			
10	Washer—spring—screw	LWZ203	9	4			
11	Lamp—rear flasher (Amber)	2A9013		2			
12	Lamp—rear flasher (Red)	2A9040		2			
13	Body—rubber	37H5527	10	2			
14	Rim	7H5182	11	2		Fin. (C) 100351	
15	Lens—Amber	37H5520	12	2			
16	Lens—Red	37H5531		2			
17	Bulb holder and plate assembly	37H5528	13	2			
18	Interior—bulb holder	AJH5100	14	2	7H5202		AJH5100 not available; use 7H5202
19	Bulb	BFS382	15	2			
20	Screw—lamp to plinth	PTZ604	16	6			
21	Nut—screw	PFS326	17	6			
22	Plinth—tail lamp—R/H	AHH5920	18	1			
23	Plinth—tail lamp—L/H	AHH5921		1			
24	Seal—plinth	AHH5918	19	2			
25	Screw—plinth to rear wing	HZS0405	20	4			
26	Washer—plain—screw	PWZ204	21	4			
27	Washer—spring—screw	LWZ204	22	4			
28	Grommet—lamp cable	RFR104	23	2			
29	Lamp—number plate	3D1813		1	BHA4153		3H1813 correction;] Except was 3D1813] Switzerland
30	Window—lamp	7H5121	24	1	57H5128	Com. (C) 88844	
31	Cover	7H5185	25	1			
32	Grommet—cable	5L321	26	1		Fin. (C) not available	Part no change; was 7H5164
33	Joint—lamp base	7H5122	27	1	57H5368		7H5122 not available; use 57H5368
34	Bulb	BFS989	28	1/2			Quantity increased at (C) 88844 Part No. change; was 2H4817
35	Sundry parts	7H5123		1 set			
36	Nut—fixing lamp	AJD8012Z	29	2			
37	Washer—plain—nut	PWZ103	30	2			
38	Washer—spring—nut	LWZ203	31	2			
39	Grommet—cable	RFR104	32	1			





SERVICE PARTS LIST

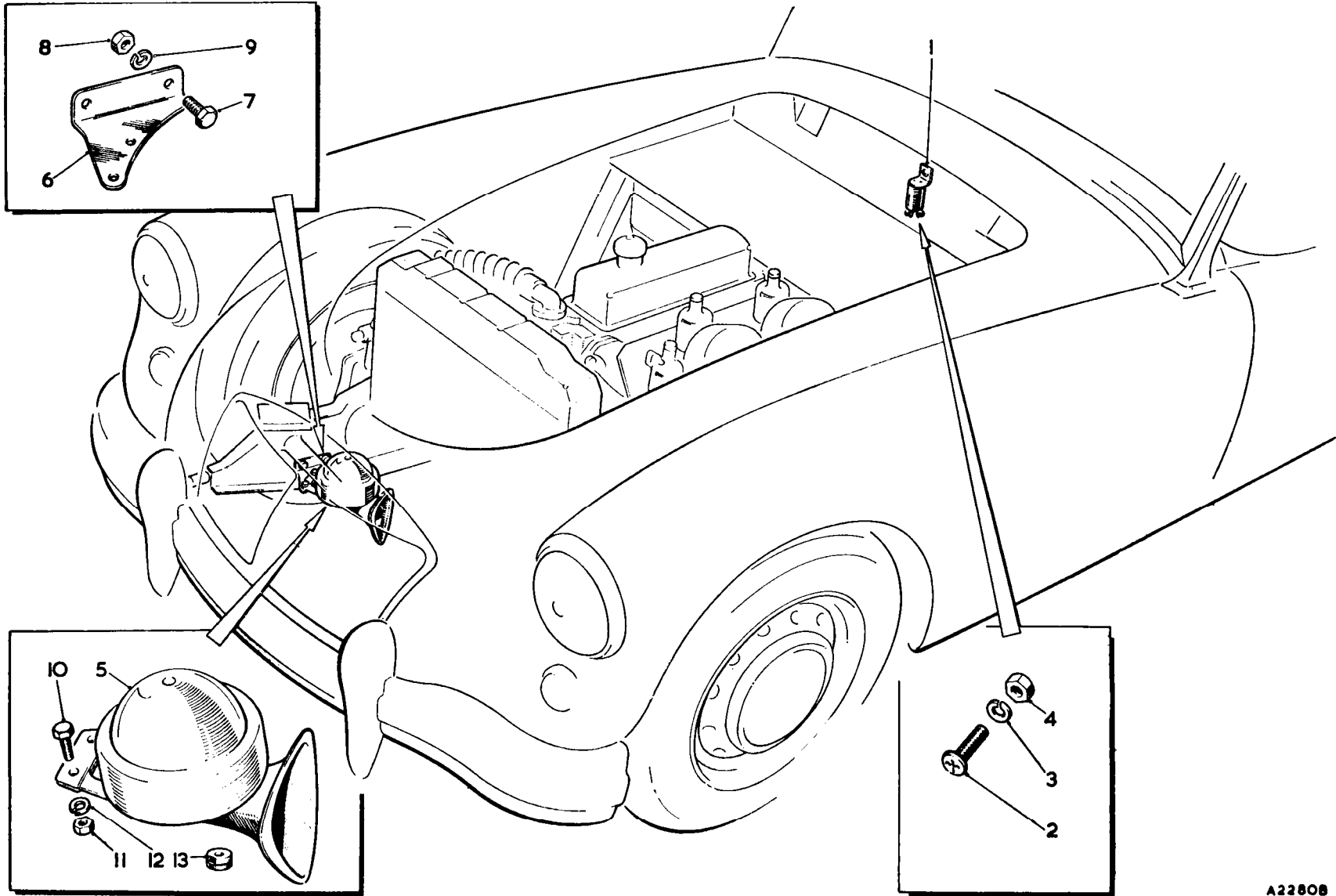
THE MGA 1600

Item No.	DESCRIPTION	Commencing (C) 68851		Quantity	MODIFICATIONS		REMARKS
		Part Number	Illus. No.		New Part Number	Change Point	
	Lamps (Road)—continued						
1	Lamp—number plate Switzerland			1	B11A4158	Com. (C) 92679	
2	Cover		33	1	57H5259		
3	Screw—cover fixing		34	2	AJD2244C		
4	Bead—cover joint		35	1	AAA463		
5	Sleeve—terminal		36	4	7H5582		
6	Nut—lamp fixing		37	2	AJH5165		
7	Washer—shakeproof—nut		38	2	LWZ404		
8	Bulb		39	2	BFS989		
9	Bracket—number plate lamp		40	1	AHH5993		
10	Lamp—stop/tail, flasher and reflex assembly—R/H (Amber and Red)			1	BHA4229		Com. (C) 100352
11	Lamp—stop/tail, flasher and reflex assembly—L/H (Amber and Red)			1	BHA4228		
12	Lamp—stop/tail, flasher and reflex assembly—R/H (Red)			1	B11A4231		
13	Lamp—stop/tail, flasher and reflex assembly—L/H (Red)			1	B11A4230		
14	Lens—flasher—R/H (Amber)		41	1	47H5362		
15	Lens—flasher—L/H (Amber)			1	47H5355		
16	Lens—flasher—R/H (Red)			1	47H5479		
17	Lens—flasher—L/H (Red)			1	47H5480		
18	Screw—flasher lens fixing (long)		42	2	47H5356		
19	Screw—flasher lens fixing (short)		43	2	47H5357		
20	Lens—stop/tail—R/H		44	1	47H5363		
21	Lens—stop/tail—L/H			1	47H5358		
22	Screw—stop/tail lens fixing		45	2	47H5359		
23	Gasket—lens sealing		46	2	47H5360		
24	Interior—flasher bulb holder		47	2	37H5452		
25	Bulb—flasher		48	2	BFS382		
26	Interior—stop/tail bulb holder		49	2	37H5459		
27	Bulb—stop/tail		50	2	BFS380		
28	Gasket—lamp seating		51	2	57H5399		
29	Grommet—bulb holder		52	4	17H5216		
30	Base with bulb holder shells—R/H		53	2	57H5401		
31	Base with bulb holder shells—L/H			2	57H5400		
32	Nut—lamp to plinth		54	6	FNZ103		
33	Washer—spring—for nut		55	6	LWZ203		
34	Plinth—lamp—R/H		56	1	AHH6118		
35	Plinth—lamp—L/H			1	AHH6119		
36	Gasket—plinth (rubber)		57	2	AHH6116	Com. (C) 100352 Fin. (C) 101352 Com. (C) 101353	
37	Prestik— $\frac{1}{2}$ " \times $\frac{1}{8}$ " (Cream)			60 ⁷	47H9651	Com. (C) 100352	AHH6116 not available; use 47H9651
38	Stud—plinth to body		58	4	CHS2510		
39	Washer—plain—stud		59	4	PWZ205		
40	Washer—spring—stud		60	4	LWZ205		
41	Nut—stud		61	4	FNZ105		

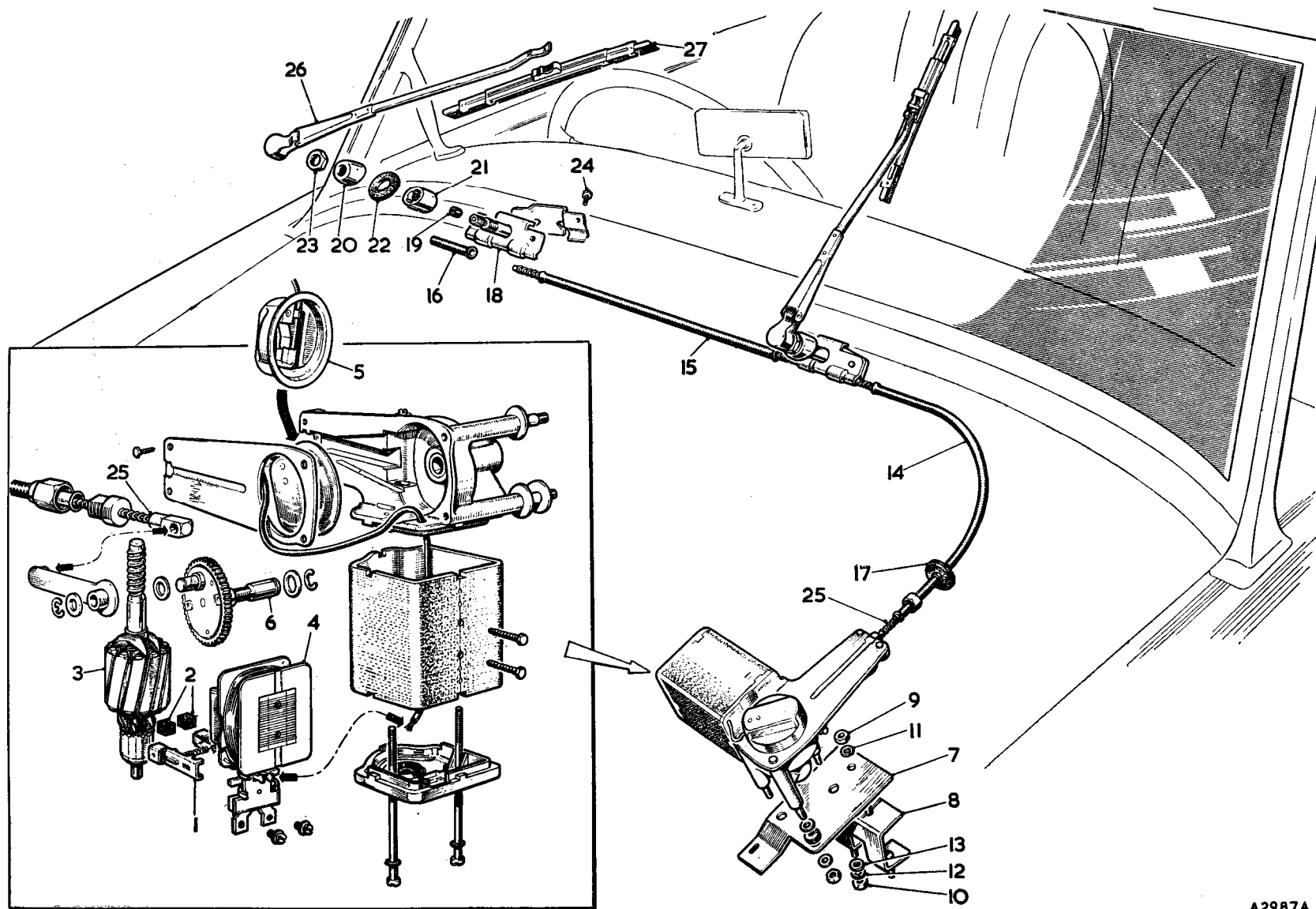
SERVICE PARTS LIST

THE MGA 1600

Item No.	DESCRIPTION	Commencing (C) 68851		Quantity	MODIFICATIONS		REMARKS
		Part Number	Illus. No.		New Part Number	Change Point	
	FLASHER—HORN						
1	Flasher unit	11G9093	1	1			
2	Screw—flasher unit to dash	PMZ0508	2	2			
3	Washer—spring—screw	LWZ205	3	2			
4	Nut—screw	FNZ105	4	2			
5	Horn—low note	1B9007	5	1			
6	Bracket—horn	AAA2088	6	1			Part No. change; was 135448
7	Screw—horn bracket to R/H front extension	HZS0505	7	2			
8	Nut—screw	FNZ105	8	2			
9	Washer—spring—nut	LWZ205	9	2			
10	Screw—horn to bracket	HZS0407	10	2			
11	Nut—screw	FNZ104	11	2			
12	Washer—spring—nut	LWZ204	12	2			
13	Grommet—horn	ADG1517	13	1			
14	Horn—high note	1B9008		1			
15	Bracket—horn	AAA2107		1			Part No. change; was 135761
16	Screw—horn bracket to L/H front extension	HZS0505		2			
17	Nut—screw	FNZ105		2			
18	Washer—spring—nut	LWZ205		2			Optional extra
19	Screw—horn to bracket	HZS0407		2			
20	Nut—screw	FNZ104		2			
21	Washer—spring—nut	LWZ204		2			
22	Grommet—horn	ADG1517		1			



A22808



A2987A

SERVICE PARTS LIST

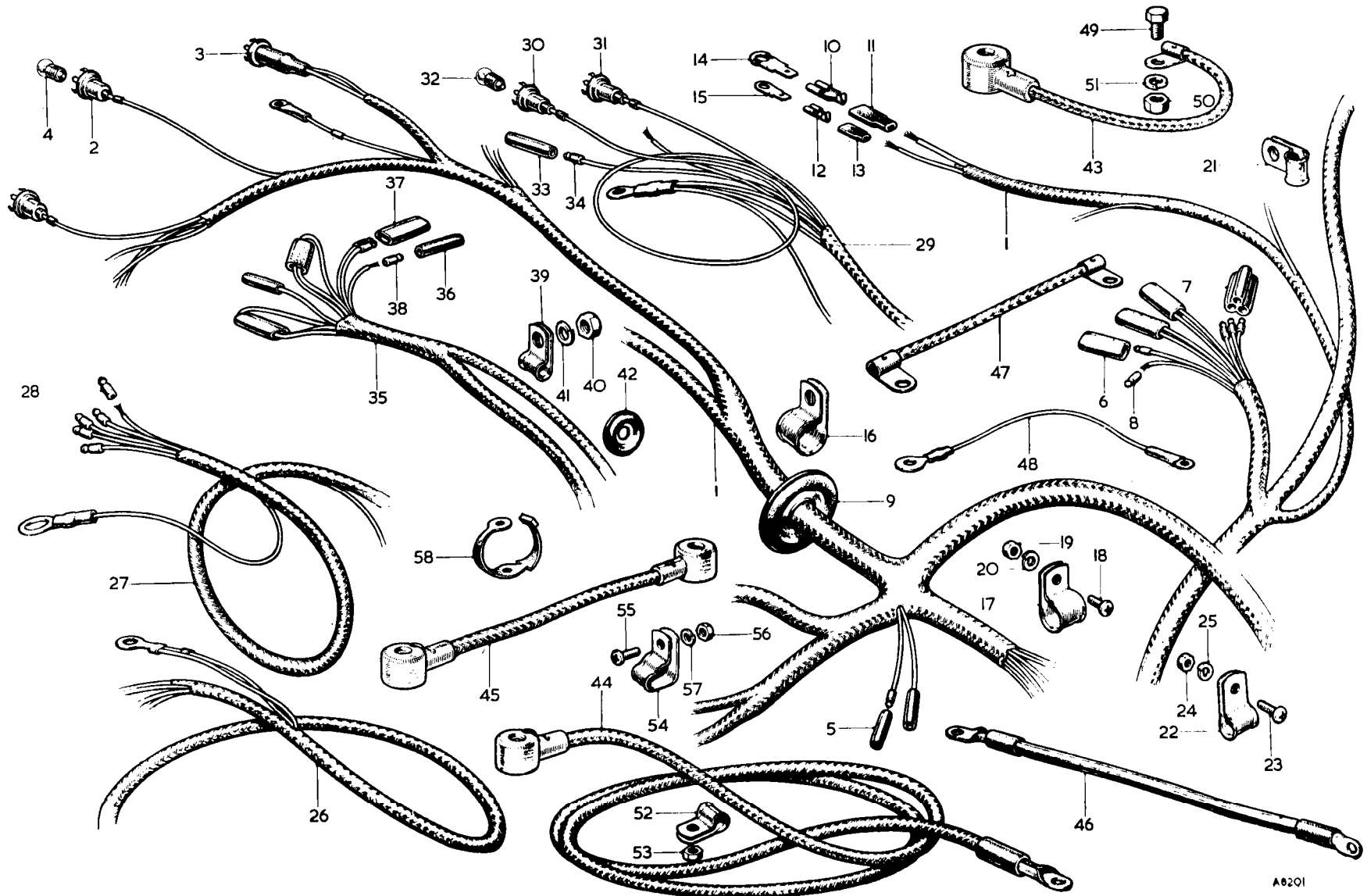
THE MGA 1600

Item No.	DESCRIPTION	Commencing (C) 68851		Quantity	MODIFICATIONS		REMARKS
		Part Number	Illus. No.		New Part Number	Change Point	
	WINDSCREEN WIPER						
1	Motor—wiper	37H5308		1	17115475		37H5308 not available; use 17115475
2	Brush gear	17H5306	1	1 set			
3	Brushes	7H5130	2	1 set			
4	Armature	17H5255	3	1			
5	Field coils	17H5432	4	1 set			
6	Fixing parts	17H5431		1 set			
7	Switch—adjusting	17H5442	5	1			
8	Shaft and gear	37H5437	6	1			
9	Sundry parts	17H5441		1 set			
10	Bracket—wiper motor—(upper)	AHH5508	7	1			
11	Bracket—wiper motor—(lower)	AHH5507	8	1			
12	Nut—upper bracket to lower bracket	FNZ104	9	1			
13	Nut—lower bracket to bulkhead	FNZ103	10	2			
14	Washer—spring—upper bracket	LWZ204	11	1			
15	Washer—spring—lower bracket	LWZ203	12	2			
16	Washer—plain—lower bracket	PWZ204	13	2			
17	Casing—wheelbox to motor (outer)	AHH5410	14	1			
18	Casing—wheelbox to wheelbox (outer)	AHH5411	15	1			
19	Casing—short end (outer)	14C3722	16	1			
20	Grommet	8D5708	17	1			
21	Wheelbox assembly	14B5588		2	BHA4151	Com. (C) 80384	14B5588 not available; use BHA4151
22	Spindle and gear	17H5388	18	2	AJH5079		17H5388 not available; use AJH5079
23	Tube—spindle (rubber)	ANK3458	19	2			
24	Bush (front)	ADB3826	20	2			
25	Bush (rear)	AHH5414	21	2			
26	Washer (rubber)	ADC560	22	2			
27	Nut	ANK3459	23	2			Part No. change; was 185925
28	Screw—cover	AJD3202Z	24	4			Part No. change; was 17H5390
29	Crosshead and rack assembly	37H5169	25	1			
30	Arm—wiper	14B5596	26	2			Part No. change; was 17H5513
31	Arm—wiper	14B5597		2			Part No. change; was 17H5514
32	Blade—wiper	17H5512	27	2			

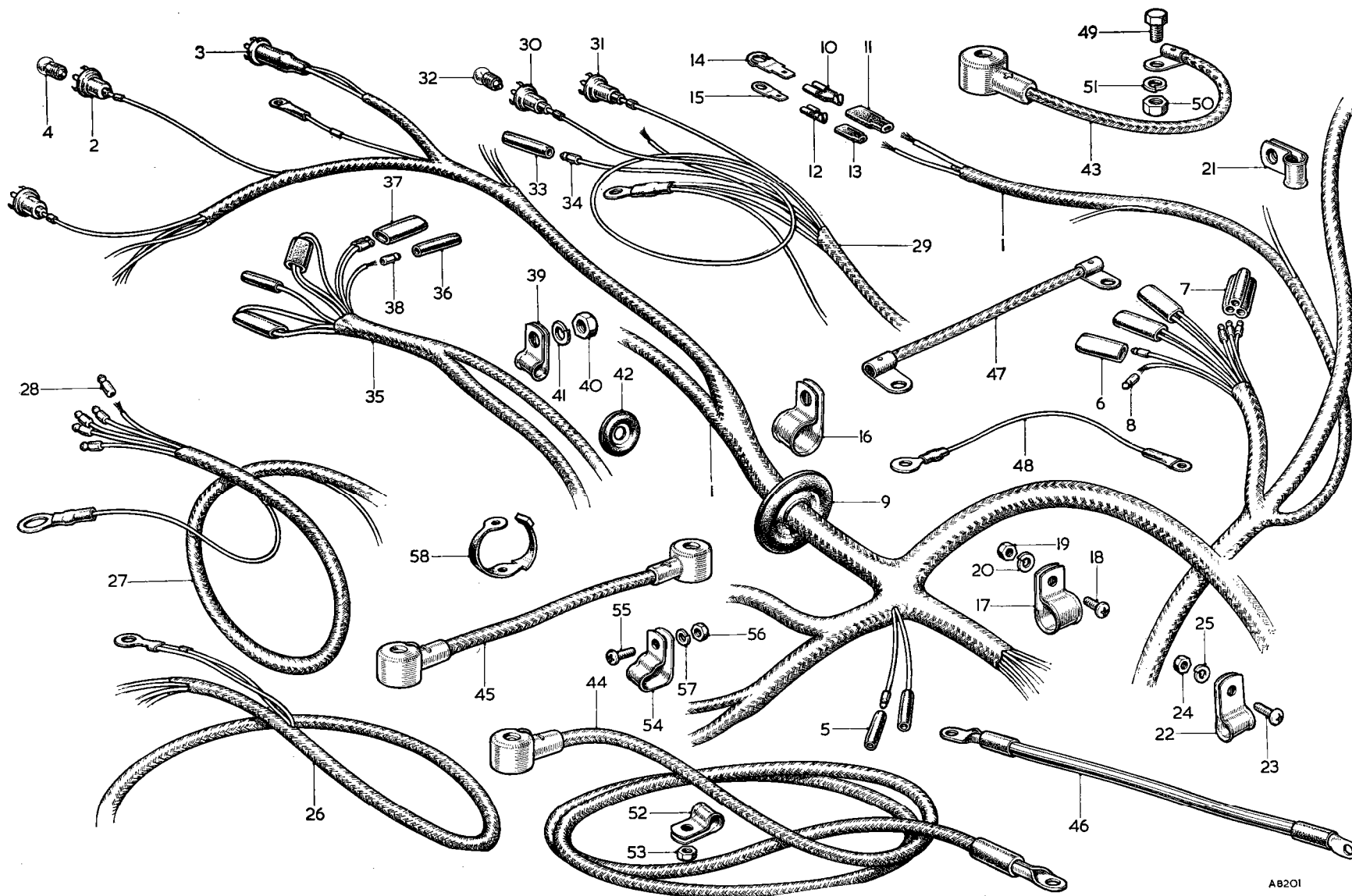
SERVICE PARTS LIST

THE MGA 1600

Item No.	DESCRIPTION	Commencing (C) 68851		Quantity	MODIFICATIONS		REMARKS
		Part Number	Illus. No.		New Part Number	Change Point	
	CABLES AND CONNECTIONS						
1	Harness—main forward	AHH5951	1	1	AHH5979	Com. (C) 74489	AHH5951 not available; use AHH5979
2	Holder—bulb—main beam	37H5181	2	1			
3	Holder—bulb—flasher warning light	37H5181		1			
4	Holder—bulb—ignition warning light	47H5166	3	1			
5	Bulb	BFS987	4	3			
6	Connector—snap—single	2H3406	5	5			
7	Connector—snap—2-way	2H2617	6	3			
8	Connector—snap—3-way	2H4992	7	1			
9	Plug—snap connector	2H2704	8	A/R			
10	Grommet	3H1457	9	1			
11	Connector—Lucar—female (35 amp.)		10	1	47H5419] Com. (C) 74489	
12	Insulator—rubber—connector		11	1	5L289		Part No. change; was 47H5418
13	Connector—Lucar—female (14 amp.)		12	1	47H5496		
14	Insulator—rubber—connector		13	1	5L286		Part No. change; was 47H5417
15	Connector—Lucar—male (35 amp.)		14	1	47H5522		
16	Connector—Lucar—male (14 amp.)		15	1	BMK403		
17	Clip—main harness—dash to body bolt	PCR1011	16	1			
18	Clip—main harness to bulkhead	PCR1007	17	2			
19	Screw—short—clip to bulkhead	PMZ0306	18	2			
20	Screw—long—clip to bulkhead	PMZ0314		1			
21	Nut—screw	FNZ103	19	2			
22	Washer—spring—nut	LWZ203	20	2			
23	Clip—main harness to wing bolt	PCR0811	21	2			
24	Clip—head and sidelamp cable to wing bolt	PCR0811		2			
25	Clip—headlamp cable to front panel	PCR0607	22	3			
26	Screw—clip to front panel	PMZ0308	23	3			
27	Nut—screw	FNZ103	24	3			
28	Washer—spring—nut	LWZ203	25	3			
29	Lead—flasher and headlamp—L/H	AHH5969	26	1			
30	Harness—chassis	AHH5953	27	1			
31	Harness—chassis	AHH6146		1			For use when steering lock is fitted
32	Plug—snap connector	2H2704	28	A/R			
33	Harness—panel	AHH5970	29	1			
34	Harness—panel	AHH6145		1			For use when steering lock is fitted
35	Holder—bulb—map light	37H5181	30	1			
36	Holder—bulb—instrument illumination	37H5181	31	4			
37	Bulb	BFS987	32	5			
38	Connector—snap—single	2H3406	33	2			
39	Plug—snap connector	2H2704	34	A/R			
40	Harness—tail lamp	AHH5954	35	1	AHH6120	Com. (C) 100352	
41	Connector—snap—single	2H3406	36	2			
42	Connector—snap—2-way	2H2617	37	3			
43	Plug—snap connector	2H2704	38	A/R			

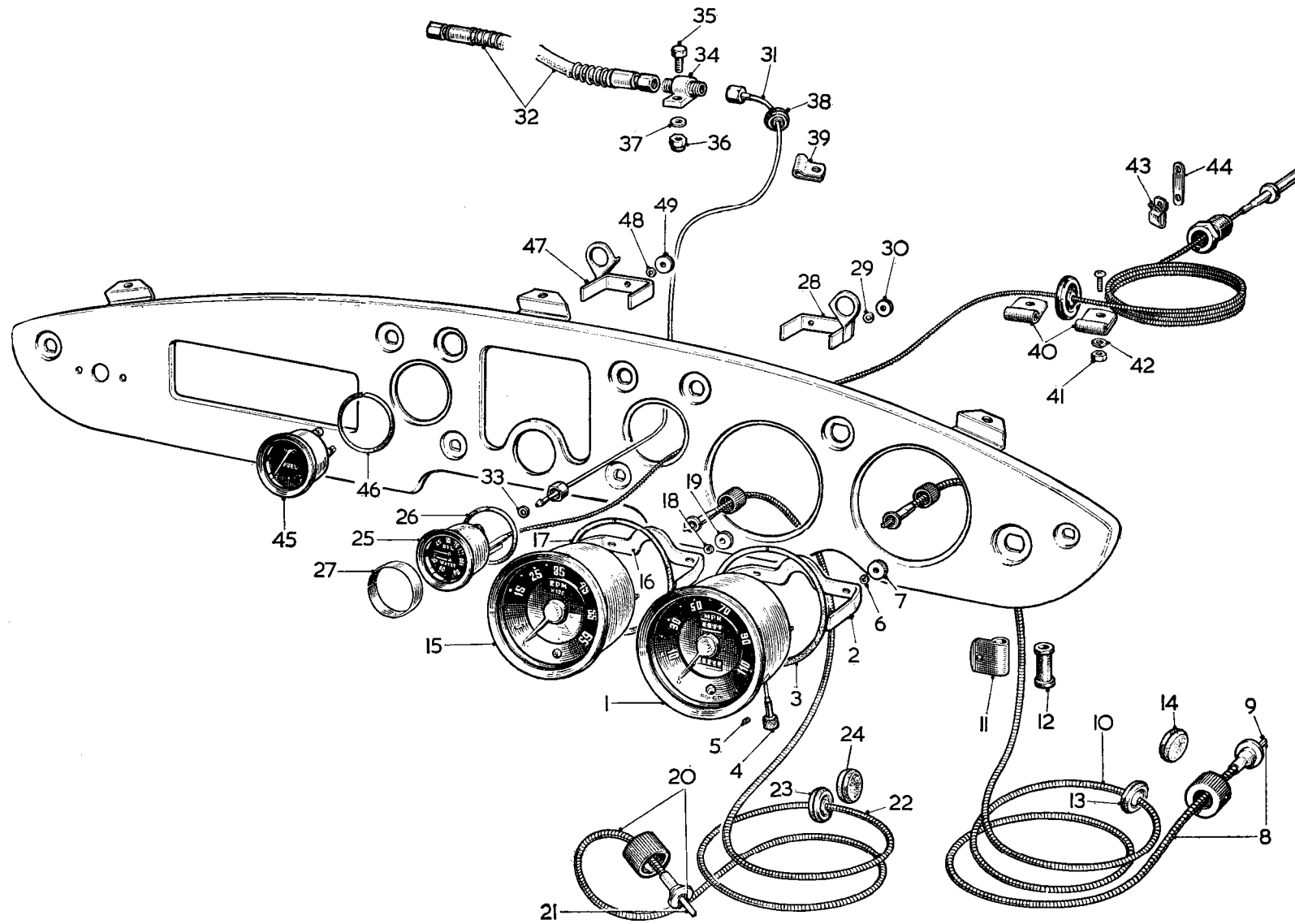


A8201



AB201

Item No.	DESCRIPTION	Commencing (C) 68851		Quantity	MODIFICATIONS		REMARKS
		Part Number	Illus. No.		New Part Number	Change Point	
Cables and Connections—continued							
1	Clip—cable to rear number plate bracket.....	PCR0311	39	1			
2	Nut—clip to wing bolt	FNZ105	40	3			
3	Washer—spring—nut	LWZ205	41	3			
4	Grommet—tail lamp harness		42	2	RFN405	Com. (C) 100352	
5	Cable—battery positive to earth	AHH5448	43	1			
6	Cable—battery negative to starter switch	AHH5449	44	1			
7	Link—battery positive to negative	AHH5450	45	1			
8	Cable—starter switch to starter	BHA4133	46	1			Standard model
9	Cable—starter switch to starter			1	AHH5814	Com. (C) 91240	All round disc brakes model
10	Strip—engine to earth	AHH5452	47	1			
11	Cable—fuel pump to earth	N.S.P.	48	1			
12	Screw—battery earth cable	HZS0504	49	1			
13	Nut—screw	FNZ105	50	1			
14	Washer—spring—nut	LWZ205	51	1			
15	Clip—R/H negative cable to starter switch	PCR0609	52	1			
16	Nut—lock—clip to ramp screw	FNZ204	53	1			
17	Clip—tail lamp harness to side member	PCR0407		2			
18	Screw—clip to side member	PMZ0306		2			
19	Nut—screw	FNZ103		2			
20	Washer—spring—nut	LWZ203		2			
21	Clip—battery cable and harness	AHH5248	54	6			
22	Screw—fixing clip	PMZ0308	55	6			
23	Nut—screw	FNZ103	56	6			
24	Washer—spring—nut	LWZ203	57	6			
25	Clip—rubber	ACH8979	58	3			
26	Harness—horn	AHH5453		1			} Optional extra
27	Strap—horn harness	AHH5506		2			
28	Harness—headlamp flasher switch extension	BHA4117		1			
29	Clip—dip switch cable to goal post	PCR0607		1			} L.H.D.
30	Screw fixing clip	PTZ806		1			



A3247A

SERVICE PARTS LIST

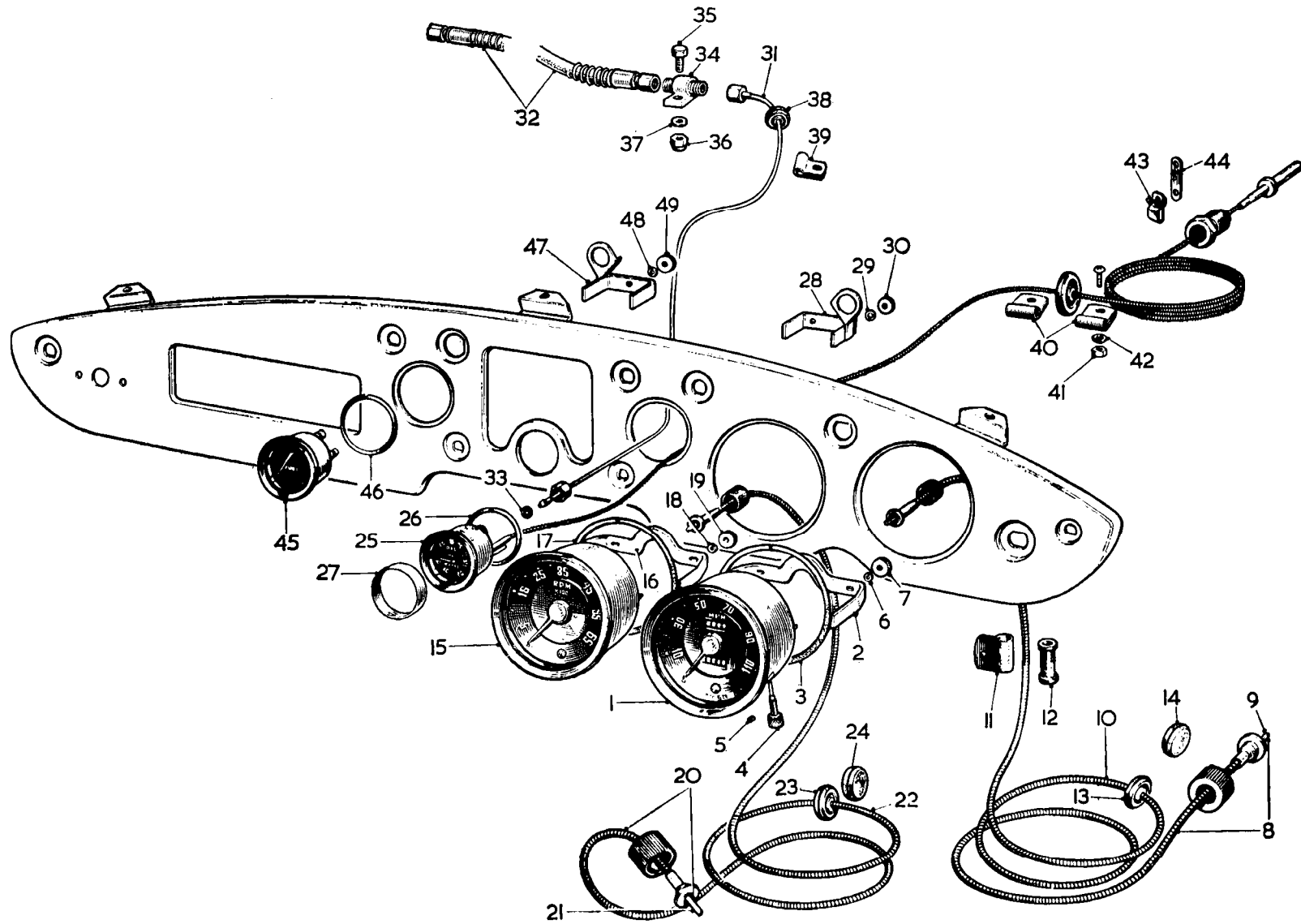
THE MGA 1600

Item No.	DESCRIPTION	Commencing (C) 68851		Quantity	MODIFICATIONS		REMARKS
		Part Number	Illus. No.		New Part Number	Change Point	
	INSTRUMENTS						
1	Speedometer (miles) 10/43 axle ratio	17H292	1	1			
2	Speedometer (kilos) 10/43 axle ratio	17H293	1	1	BHA4220	Fin. (C) 100351	17H293 not available; use BHA4220
3	Speedometer (miles) 10/41 axle ratio			1	BHA4060	Com. (C) 100352] For alternative axle ratio
4	Speedometer (kilos) 10/41 axle ratio			1	BHA4226		
5	Speedometer (miles) 9/41 axle ratio	17H295	1	1			
6	Speedometer (kilos) 9/41 axle ratio	BHA4221	1	1			
7	Bezel	N.S.P.	1	1			Was 27H307
8	Strap-fixing	AJH5176	2	1			Was AJH5177
9	Glass	N.S.P.	1	1			
10	Ring (rubber)	AJH5178	3	1			
11	Knob—trip	37H613	4	1			Part No. change; was AJH5179
12	Screw—knob		5	1	17H1658	Com. (C) 100352	
13	Washer—spring	27H387	6	2	LWZ302	Fin. (C) 100351	27H387 not available; use LWZ302
14	Washer—shakeproof			2	LWZ403		Part No. change; was 17H1638
15	Cable assembly—speedometer 5' 3" (160.02 cm.)	27H1393	8	1	BCA4079		27H1393 not available; use BCA4079
16	Cable inner		9	1	17H1346	Com. (C) 74979	
17	Cable outer		10	1	17H1586		
18	Cable assembly—speedometer 5' 6" (167.65 cm.)			1			Part No. change; was ACC8788
19	Cable inner			1			
20	Cable—outer			1			
21	Clip—cable to bulkhead	PCR0709	11	1			
22	Sleeve—clip (rubber)	ACH8529	12	1			
23	Nut fixing clip	FNZ104	1	1			
24	Washer—spring—nut	LWZ204		1			
25	Grommet—cable through dash	ACB8474	13	1			
26	Grommet—blanking cable hole in dash	4G2541	14	1			
27	Revolution counter	17H300	15	1			
28	Bezel	N.S.P.		1			Was 27H307
29	Strap fixing	AJH5176	16	1			Was AJH5177
30	Glass	N.S.P.		1			
31	Ring (rubber)	AJH5178	17	1			
32	Washer—spring	LWZ2302	18	2			Part No change; was 27H387
33	Nut knurled	17H932	19	2			
34	Cable assembly—revolution counter 4' 0" (121.92 cm.)	189141	20	1			
35	Cable inner			1			
36	Cable outer			1			
37	Cable assembly—revolution counter 3' 2" (96.52 cm.)			1			
38	Cable inner			1			
39	Cable outer			1			
40	Grommet cable through dash	ACB8474	23	1			
41	Grommet blanking cable hole in dash	4G2541	24	1			

SERVICE PARTS LIST

THE MGA 1600

Item No.	DESCRIPTION	Commencing (C) 68851		Quantity	MODIFICATIONS		REMARKS
		Part Number	Illus. No.		New Part Number	Change Point	
	Instruments—continued						
1	Gauge—oil pressure and temperature (fahrenheit)	17H298	25	1			
2	Gauge—oil pressure and temperature (centigrade)	BHA4110		1			
3	Bezel	N.S.P.		1			Was AJH5182
4	Glass	N.S.P.		1			Was 17H1068
5	Ring (rubber)	17H1821	26	1			
6	Ring (rubber)	27H972		1] Centigrade gauge
7	Strip—window	N.S.P.	27	1			
8	Strap—fixing	AJH5186	28	1			
9	Washer—spring	27H387	29	2	LWZ302		27H387 not available; use LWZ302
10	Nut—knurled	17H932	30	2			
11	Pipe assembly—oil gauge	AHH5323	31	1			
12	Pipe—connector to engine (flexible)	AAA627	32	1			Standard model. Part No. change; was 83866
13	Pipe—connector to engine (flexible)			1	AHH5820	Com. (C) 91240	All round disc brakes model
14	Washer—oil pipe to oil gauge (leather)	2K4986	33	1			
15	Connector—oil gauge pipe	AAA628	34	1			Part No. change; was 83875
16	Screw—connector to starter bracket	HZS0406	35	1			
17	Nut—screw	LNZ104	36	1			
18	Washer—plain—screw	PWZ104	37	1			
19	Grommet—oil gauge pipe	AAA643	38	1			Part No. change; was 84188
20	Clip—oil gauge pipe to bulkhead (front)	PCR0207	39	1			
21	Clip—oil gauge pipe to bulkhead (rear)	PCR0207		1			
22	Clip—thermometer pipe to bulkhead (front and rear)	PCR0307	40	3			
23	Screw—oil and thermometer pipe clip	PMZ0307		2			
24	Nut—screw	FNZ103	41	3			
25	Washer—spring—screw	LWZ203	42	3			
26	Clip—thermometer pipe	BHA4081	43	1			
27	Retainer—clip	AHH5802	44	1			
28	Gauge—fuel	17H299	45	1			
29	Bezel	N.S.P.		1			Was AJH5182
30	Glass	N.S.P.		1			Was 17H1068
31	Ring (rubber)	17H1821	46	1			
32	Strap—fixing	AJH5185	47	1			
33	Washer—spring	27H387	48	1	LWZ302		27H387 not available; use LWZ302
34	Nut—knurled	17H932	49	1			



A3247A