

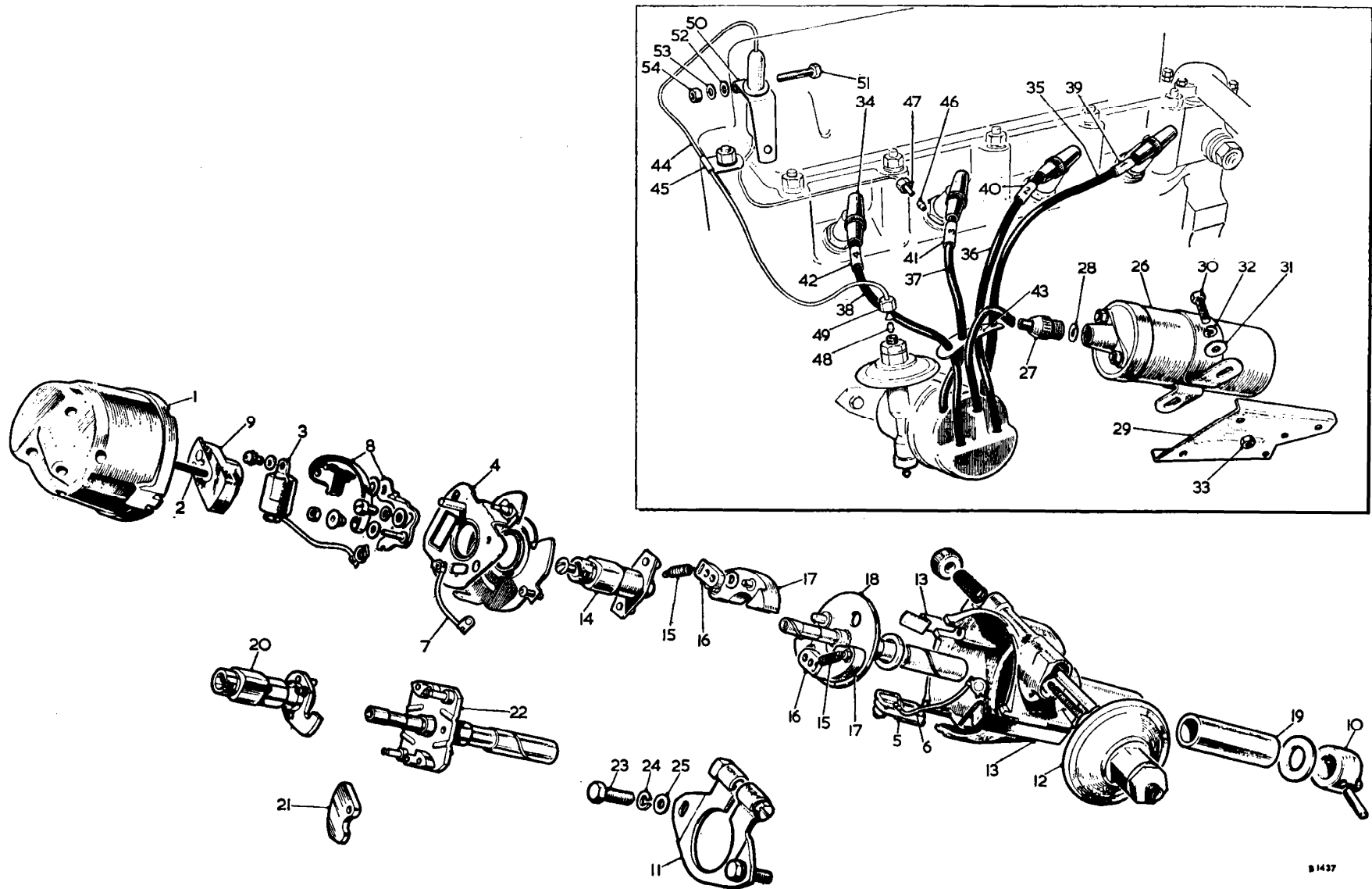
B 1437

SERVICE PARTS LIST

THE MGA 1600

Item No.	DESCRIPTION	Commencing (E) 16GA/H101		Quantity	MODIFICATIONS		REMARKS
		Part Number	Illus. No.		New Part Number	Change Point	
	Distributor—continued						
1	Cam		20	1	57H5047	Com. (E) 16GC/H101	
2	Spring—automatic advance		15	1 set	57H5133 57H5406	Com. (E) 16GC/L1012, H4004 Com. (E) 16GC/H101	
3	Weight		21	2	57H5421 57H5049 57H5420	Com. (E) 16GC/L1012, H4004 Com. (E) 16GC/H101 Com. (E) 16GC/L1012, H4004	Not available; use 57H5420
4	Shaft and action plate		22	1	57H5050] Com. (E) 16GC/H101	
5	Bushing			1	47H5164		
6	Sundry parts		19	1 set	17H5106		
7	Plate—clamping		11	1	3H2138		
8	Screw with nut			1	37H5063		
9	Screw fixing distributor to housing	53K2017	23	2			Part No. Change was 52K2017
10	Washer—spring—screw	LWN204	24	2			
11	Washer—plain—screw	PWN104	25	2			
	IGNITION COIL						
12	Coil—ignition	1D1963	26	1	27H2204		1D1963 not available; use 27H2204
13	Nut—terminal	3H2605	27	1			
14	Washer for nut	3H2606	28	1			Standard model
15	Bracket—coil mounting	A1H15945	29	1			
16	Bracket—coil mounting			1	12H151	Com. (C) 01240	All round disc brakes model
17	Screw fixing coil to bracket	HZS0405	30	2] Com. (C) 01240	
18	Washer—plain—screw	PWZ204	31	2			
19	Washer—spring—screw	LWZ204	32	2			
20	Nut—screw	FNZ104	33	2			
21	Screw—clamp			1	HZS0416		
22	Washer—clamp screw and bracket (plain)			2	PWZ204		
23	Washer—clamp screw and bracket (spring)			1	LWZ204		
24	Nut—screw			1	FNZ104	All round disc brakes model	
25	Washer—coil to dynamo bracket (plain)			2	PWZ205		
26	Washer—coil to dynamo bracket (spring)			2	LWZ205		
27	Nut—coil to dynamo bracket			2	FNZ105		

Item No.	DESCRIPTION	Commencing (E) 16GA/H101		Quantity	MODIFICATIONS		REMARKS
		Part Number	Illus. No.		New Part Number	Change Point	
	H.T. CABLES						
1	Terminal—sparking plug	AEC388	34	4			
2	Cable—H.T.—No. 1 13" (33.02 cm.)	AAA5981	35	A/R] Only available in multiples of feet] Part no change; was 45223
3	Cable—H.T.—No. 2 10½" (26.67 cm.)	AAA5981	36	A/R			
4	Cable—H.T.—No. 3 7½" (19.05 cm.)	AAA5981	37	A/R			
5	Cable—H.T.—No. 4 9" (22.86 cm.)	AAA5981	38	A/R			
6	Sleeve—cable identity—No. 1	2H4243	39	1			
7	Sleeve—cable identity—No. 2	2H4244	40	1			
8	Sleeve—cable identity—No. 3	2H4245	41	1			
9	Sleeve—cable identity—No. 4	2H4246	42	1			
10	Sleeve—H.T. cable	8G536	43	1			
	VACUUM CONTROL						
11	Pipe—ignition control	1H919	44	1			
12	Clip	12H90	45	1			
13	Olive—carburetter end	6K649	46	1			
14	Nut—carburetter end	2A459	47	1			
15	Olive—distributor end	6K649	48	1			
16	Nut—distributor end	6K650	49	1			
17	Clip—fuel trap mounting	1H841	50	1			
18	Bolt—clip	PMZ0216	51	1			
19	Washer—plain—bolt	PWZ102	52	1			
20	Washer—spring—bolt	LWZ202	53	1			
21	Nut—bolt	CNZ102	54	1			



B1437